

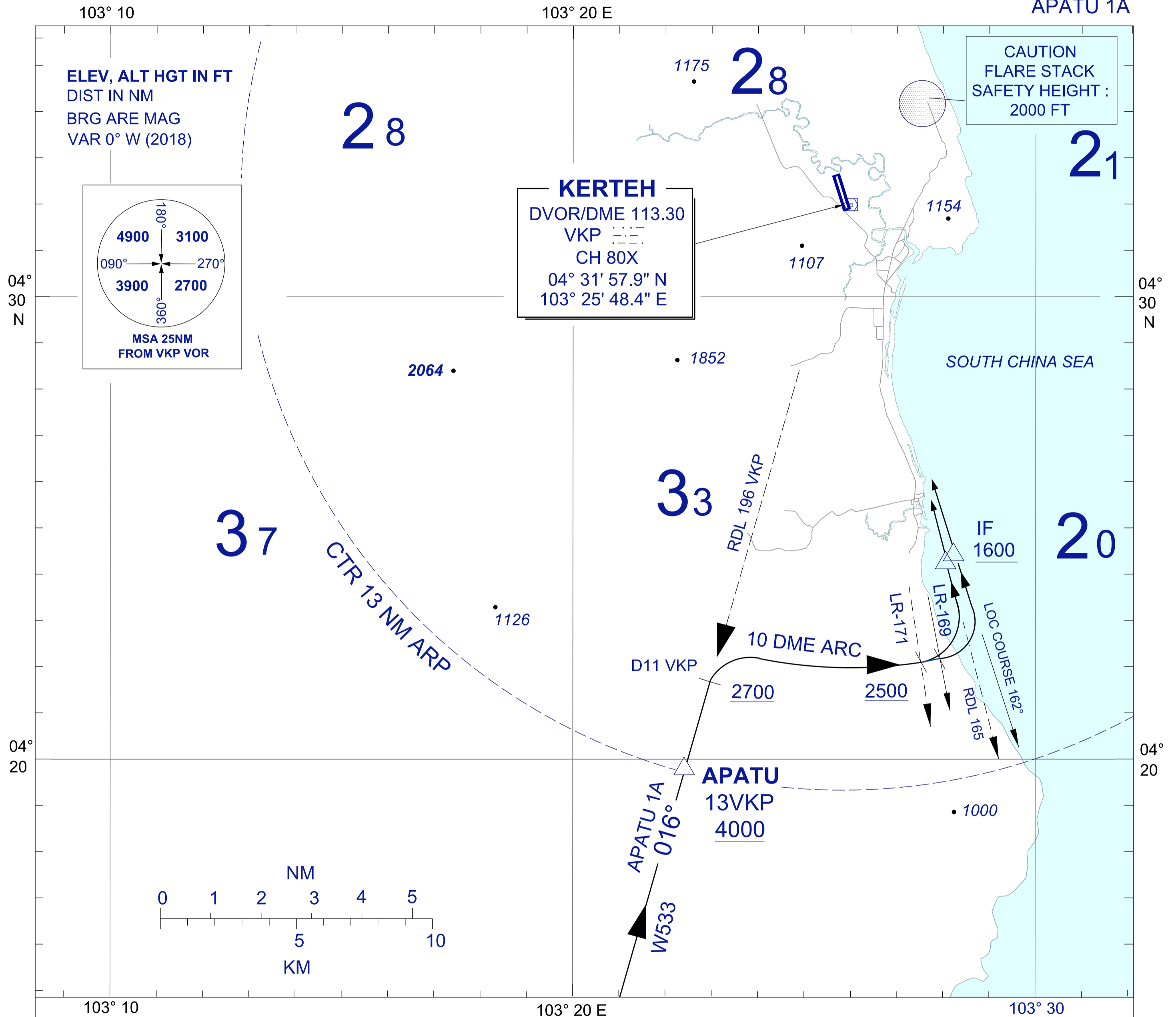
**STANDARD ARRIVAL CHART
INSTRUMENT (STAR) - ICAO**

**KERTEH/KERTEH (WMKE)
RWY 34**

TRANSITION ALTITUDE
11,000 FT

TWR 123.3
258.5
SMC 121.8
ATIS 128.25

VOR/DME
APATU 1A



APATU ONE ALPHA ARRIVAL

- FROM APATU TRACK TO VKP VOR INBOUND
- THEN TRACK VIA 10 DME ARC TO IF
- TO INTERCEPT LOC COURSE OR RDL165 VKP

COMMUNICATION FAILURE :

- SQUAWK 7600
- IF UNDER PILOT NAVIGATION, CONTINUE ON STAR AND LAND.
- IF BELOW MSA, CLIMB TO MSA, THEN TRACK TO INTERCEPT CLEARED
- OR PREVIOUSLY ASSIGNED STAR AND LAND.

CHANGES : ADD ARROW RDL 196 VKP
ADD DME D11 VKP