

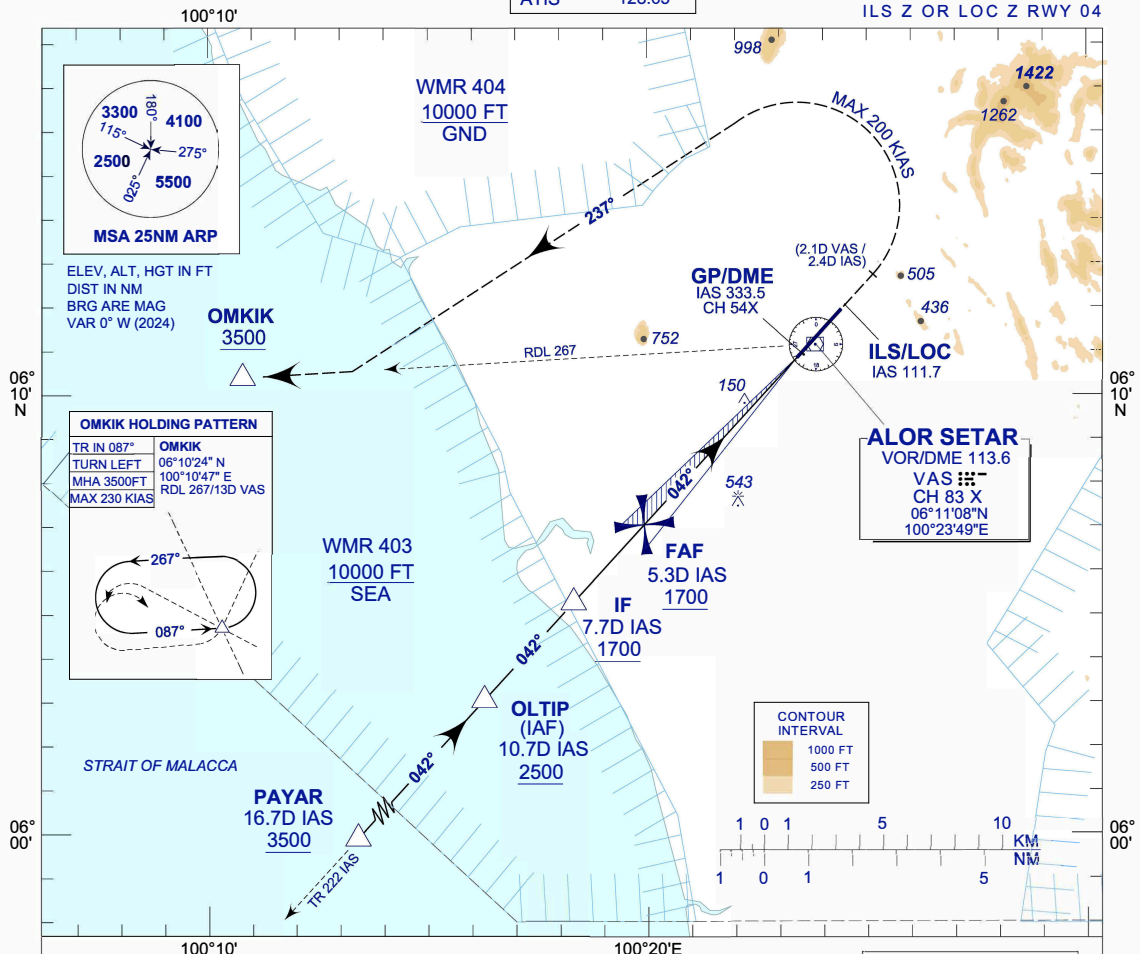
**INSTRUMENT
APPROACH
CHART - ICAO**

AERODROME ELEV 14 FT
HEIGHTS RELATED TO
THR RWY 04 - ELEV 12 FT

TWR/APP	122.3
SMC	121.6
ATIS	128.65

**ALOR SETAR/
SULTAN ABDUL HALIM (WMKA)**

ILS Z OR LOC Z RWY 04



MISSED APPROACH

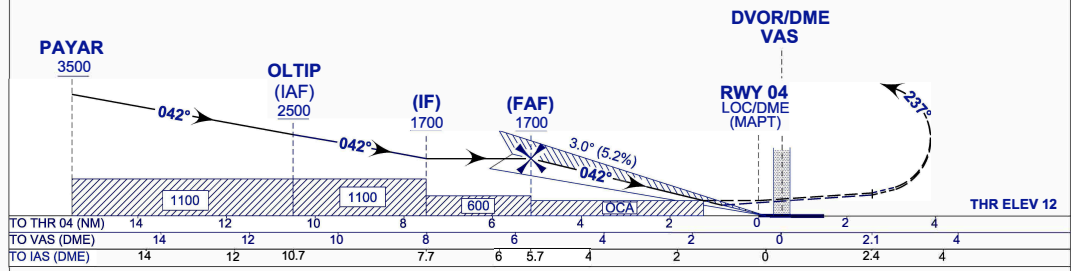
CLIMB ON TR 042° TO 3500 FT. ON PASSING 2.1 DME VAS OR 2.4 DME IAS TURN LEFT TR 237° TO INTERCEPT RDL 267 TO OMKIK HOLD OR AS DIRECTED BY ATC

CAUTION

MISSED APPROACH TURNED SPEED MAX 200 KIAS

TRANSITION ALT 11000

ILS RDH 50 FT



TO THR 04 (NM)	14	12	10	8	6	4	2	0	2	4
TO VAS (DME)	14	12	10	8	6	4	2	0	2.1	4
TO IAS (DME)	14	12	10.7	7.7	6	5.7	4	2	0	2.4

OCA (OCH)	A	B	C	D
ILS/DME (CAT I)	347 (335)	359 (347)	366 (354)	376 (364)
LOC/DME	530 (518)			

DIST IAS DME	NM	5.3	5.0	4.0	3.0	2.0	1.3
DIST THR/RWY 04	NM	5.1	4.8	3.8	2.8	1.8	1.1
ALTITUDE	FT	1700	1605	1286	968	649	426

GS	KT	80	100	120	140	160	180
FAF - RWY04 (5.1NM)	MIN:SEC	3:52	3:06	2:35	2:13	1:56	1:43
RATE OF DESCEND (318.6 FT/NM)	FT/MIN	420	530	630	740	840	950

NEW CHART