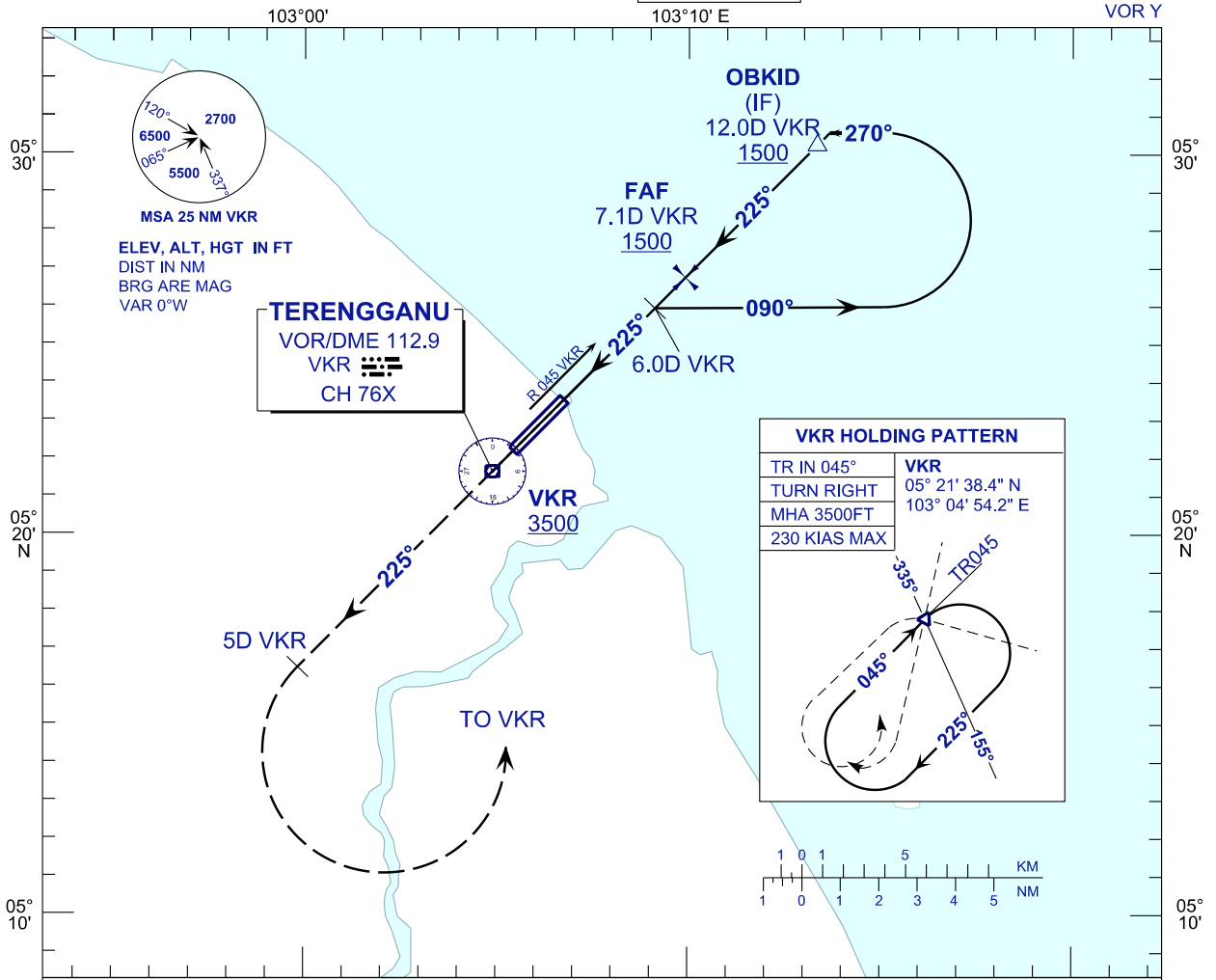


INSTRUMENT APPROACH CHART - ICAO

AERODROME ELEV 20 FT
HEIGHT RELATED TO
THR RWY 22 - ELEV 20 FT

| | |
|------|--------|
| APP | 123.6 |
| | 235.32 |
| | 121.5 |
| TWR | 119.05 |
| SMC | 121.6 |
| ATIS | 126.65 |

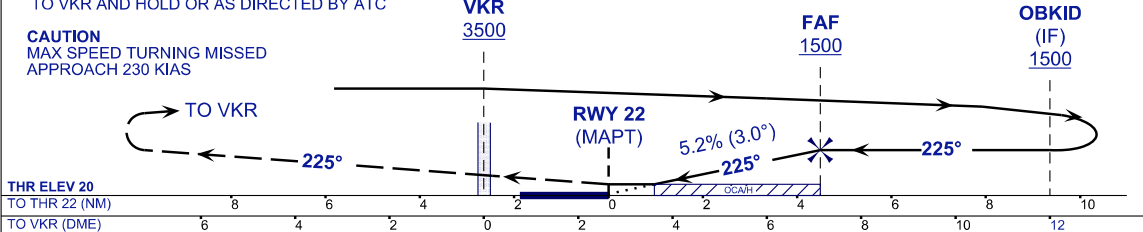
**KUALA TERENGGANU/
SULTAN MAHMUD (WMKN)
RWY 22**



MISSED APPROACH
AT MAPT CLIMB TO 3500FT ON TR 225°
PASSING 5 DME VKR TURN LEFT
TO VKR AND HOLD OR AS DIRECTED BY ATC

CAUTION
MAX SPEED TURNING MISSED
APPROACH 230 KIAS

TRANSITION LEVEL FL130
TRANSITION ALT 11 000



THR ELEV 20
TO THR 22 (NM)
TO VKR (DME)

| | | | | |
|---------|-----------|---|---|---|
| OCA/OCH | A | B | C | D |
| VOR/DME | 380/(360) | | | |

| | | | | | | |
|----------------|----|------|------|-----|-----|-----|
| DME VKR | NM | 7.1 | 6.1 | 5.1 | 4.1 | 3.1 |
| DIST THR/RWY22 | NM | 4.5 | 3.5 | 2.5 | 1.5 | 0.5 |
| ALTITUDE | FT | 1500 | 1185 | 867 | 548 | 230 |

| | | | | | | | |
|-----------------------------|---------|------|------|------|------|------|------|
| GS | KT | 80 | 100 | 120 | 140 | 160 | 180 |
| FAF - RWY22 (4.5NM) | MIN:SEC | 3:22 | 2:42 | 2:15 | 1:55 | 1:41 | 1:30 |
| RATE OF DESCEND(318.5FT/NM) | FT/MIN | 420 | 530 | 640 | 740 | 850 | 960 |

CHANGES : AERODROME AND THRESHOLD ELEVATION