

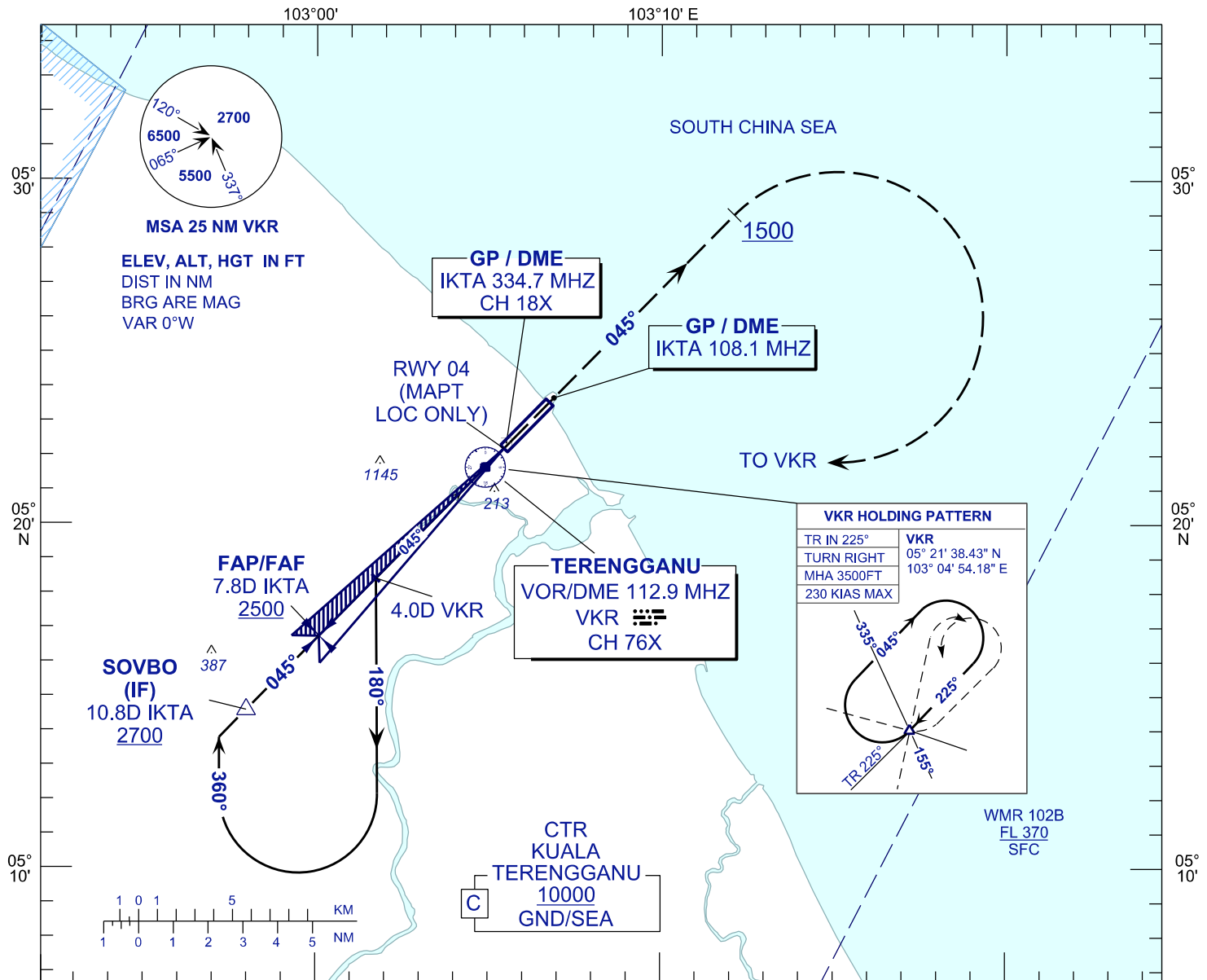
**INSTRUMENT
APPROACH
CHART - ICAO**

AERODROME ELEV 20 FT
HEIGHT RELATED TO
THR RWY 04 - ELEV 19 FT

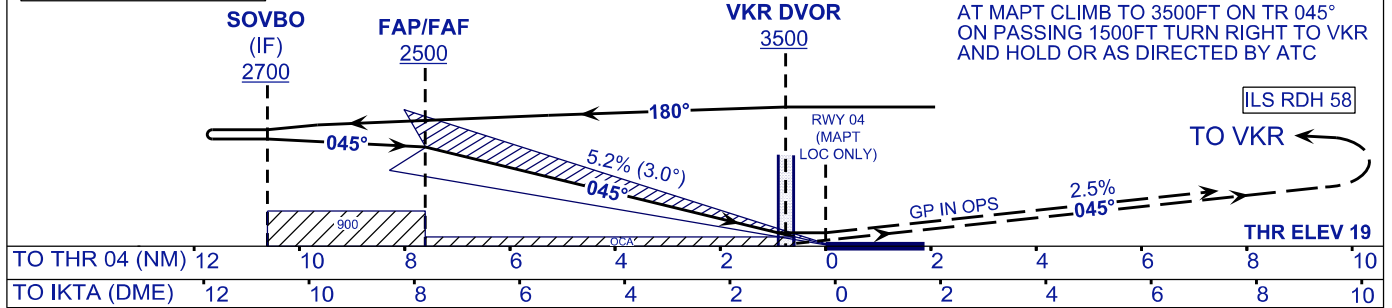
APP	123.6
	235.32
TWR	121.5
SMC	119.05
ATIS	121.6
	126.65

**KUALA TERENGGANU/
SULTAN MAHMUD (WMKN)
RWY 04**

ILS Y OR LOC Y



TRANSITION LEVEL FL130
TRANSITION ALT 11000



MISSED APPROACH
AT MAPT CLIMB TO 3500FT ON TR 045°
ON PASSING 1500FT TURN RIGHT TO VKR
AND HOLD OR AS DIRECTED BY ATC

OCA (OCH)	A	B	C	D
ILS/DME CAT I	256 (237)			
LOC/DME	380 (361)			

DME IKTA	NM	7.8	6.8	5.8	4.8	3.8	2.8	1.8	0.8
DIST THR/RWY04	NM	7.6	6.6	5.6	4.6	3.6	2.6	1.6	0.6
ALTITUDE	FT	2500	2179	1861	1542	1224	905	587	268

GROUND SPEED (GS)	KNOTS	80	100	120	140	160	180
FAP - RWY04 (7.6 NM)	MIN:SEC	5:42	4:34	3:48	3:16	2:51	2:32
RATE OF DESCEND (318.4 FT/NM)	FT/MIN	420	530	630	740	850	960

CHANGES : AERODROME AND THRESHOLD ELEVATION.