

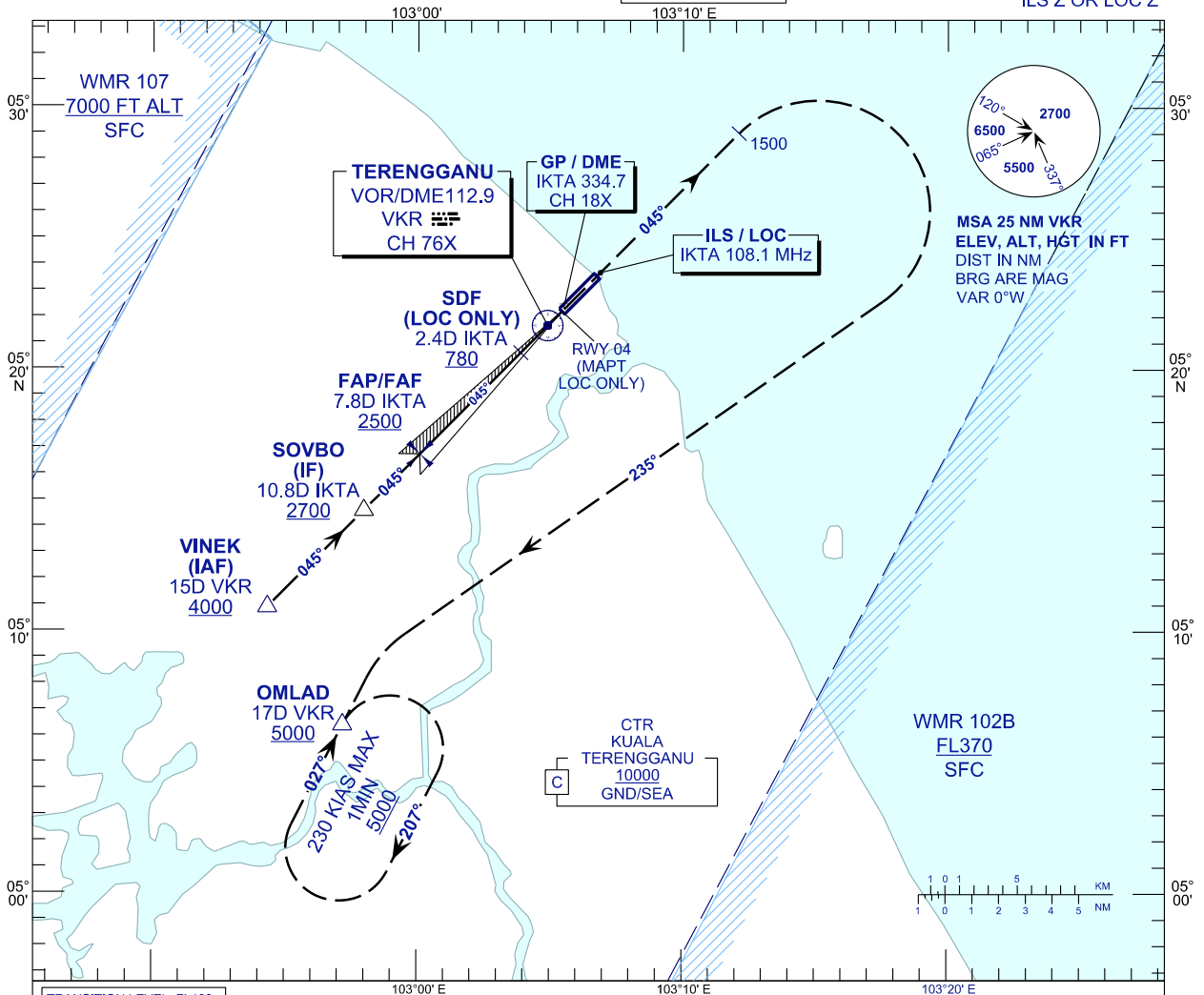
INSTRUMENT APPROACH CHART - ICAO

AERODROME ELEV 20 FT
HEIGHT RELATED TO
THR RWY 04 - ELEV 19 FT

APP	123.6
	235.32
	121.5
TWR	119.05
SMC	121.6
ATIS	126.65

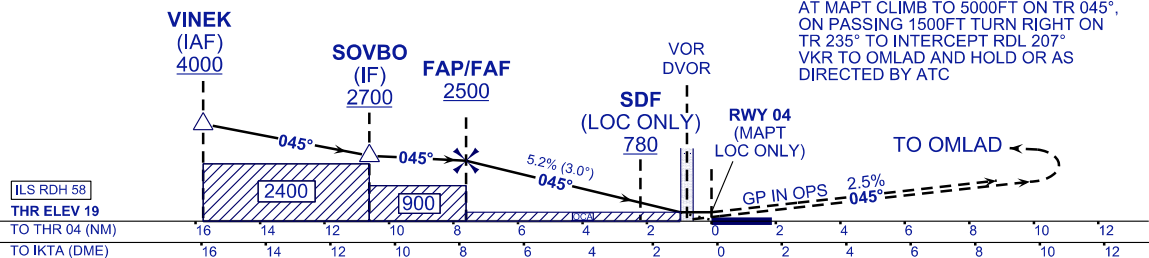
**KUALA TERENGGANU/
SULTAN MAHMUD (WMKN)
RWY 04**

ILS Z OR LOC Z



TRANSITION LEVEL FL130
TRANSITION ALT 11000

MISSED APPROACH
AT MAPT CLIMB TO 5000FT ON TR 045°, ON PASSING 1500FT TURN RIGHT ON TR 235° TO INTERCEPT RDL 207° VCR TO OMLAD AND HOLD OR AS DIRECTED BY ATC



ILS RDH 58
THR ELEV 19
TO THR 04 (NM)
TO IKTA (DME)

OCA (OCH)	A	B	C	D
ILS/DME CAT I	256 (237)			
LOC/DME (GP IN OPS)	380 (361)			

DME IKTA	NM	7.8	6.8	5.8	4.8	3.8	2.8	1.8	0.8
DIST THR/RWY04	NM	7.6	6.6	5.6	4.6	3.6	2.6	1.6	0.6
ALTITUDE	FT	2500	2179	1861	1542	1224	905	587	268

GROUND SPEED (GS)	KNOTS	80	100	120	140	160	180
FAP - RWY04 (7.6 NM)	MIN:SEC	5:42	4:34	3:48	3:16	2:51	2:32
RATE OF DESCEND (318.4 FT/NM)	FT/MIN	420	530	630	740	850	960

CHANGES : AERODROME AND THRESHOLD ELEVATION.