

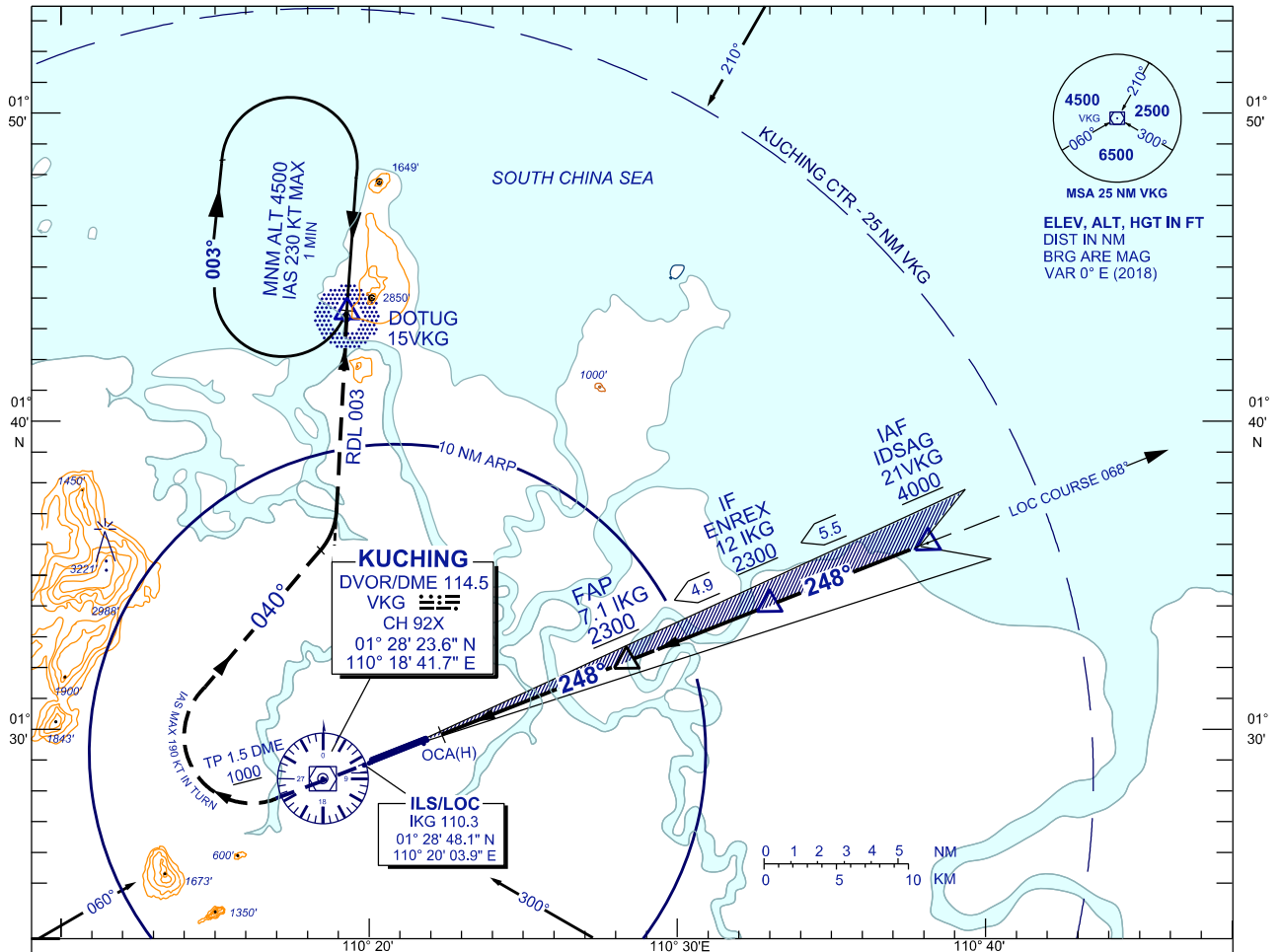
**INSTRUMENT  
APPROACH  
CHART - ICAO**

**AERODROME ELEV 88 FT**  
HEIGHTS RELATED TO  
THR RWY 25 - ELEV 42 FT  
ILS REF DATUM 54 FT

TWR	118.1 (P)	SMC	121.9
	121.7 (S)	ATIS	128.4
APP	120.2 (P)	FIS	134.75
	123.85 (S)		
ACC	134.5 (P)		
	125.35 (S)		

**KUCHING/KUCHING (WBGG)  
RWY 25**

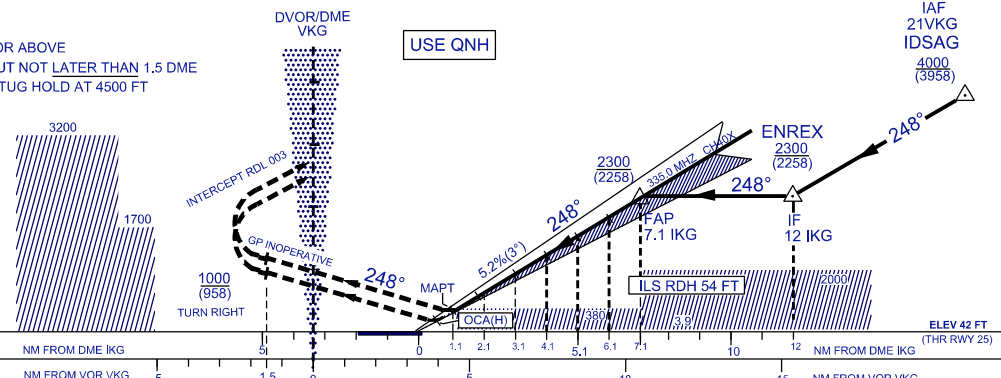
ILS Z/ LOC Z  
(FROM STAR)



DIST BY DME (NM)	7.1	6.1	5.1	4.1	3.1	2.1	1.1	TRANSITION ALT 11,000
ALT 3° APCH PATH (FT)	2300 (2258)	1982 (1940)	1664 (1622)	1346 (1304)	1028 (986)	710 (668)	443 (401)	

**MISSED APPROACH**

CLIMB ON 248° TO 1000 FT OR ABOVE  
TURN RIGHT AFTER VKG, BUT NOT LATER THAN 1.5 DME  
INTERCEPT RDL 003 TO DOTUG HOLD AT 4500 FT  
OR AS DIRECTED BY ATC



OCA (H) FT		A	B	C	D
STRAIGHT-IN APPROACH	CAT. 1	243 (201)	243 (201)	245 (203)	256 (214)
	GP INOP.	443 (401) / 1.1 IKG			
CIRCLING		750 (662)	750 (662)	1200 (1112)	1200 (1112)

GROUND SPEED(KT)		70	90	120	150	180	210
FAP - MAPT = 6.0NM	MIN : SEC	5:08	4:00	3:00	2:24	2:00	1:43
	RATE OF DESCENT (3°)	FT./ MIN	354	455	607	759	911

CHANGES : CHANGE AERODROME ELEVATION TO 88 FT AND THR RWY 25 ELEVATION TO 42 FT.