

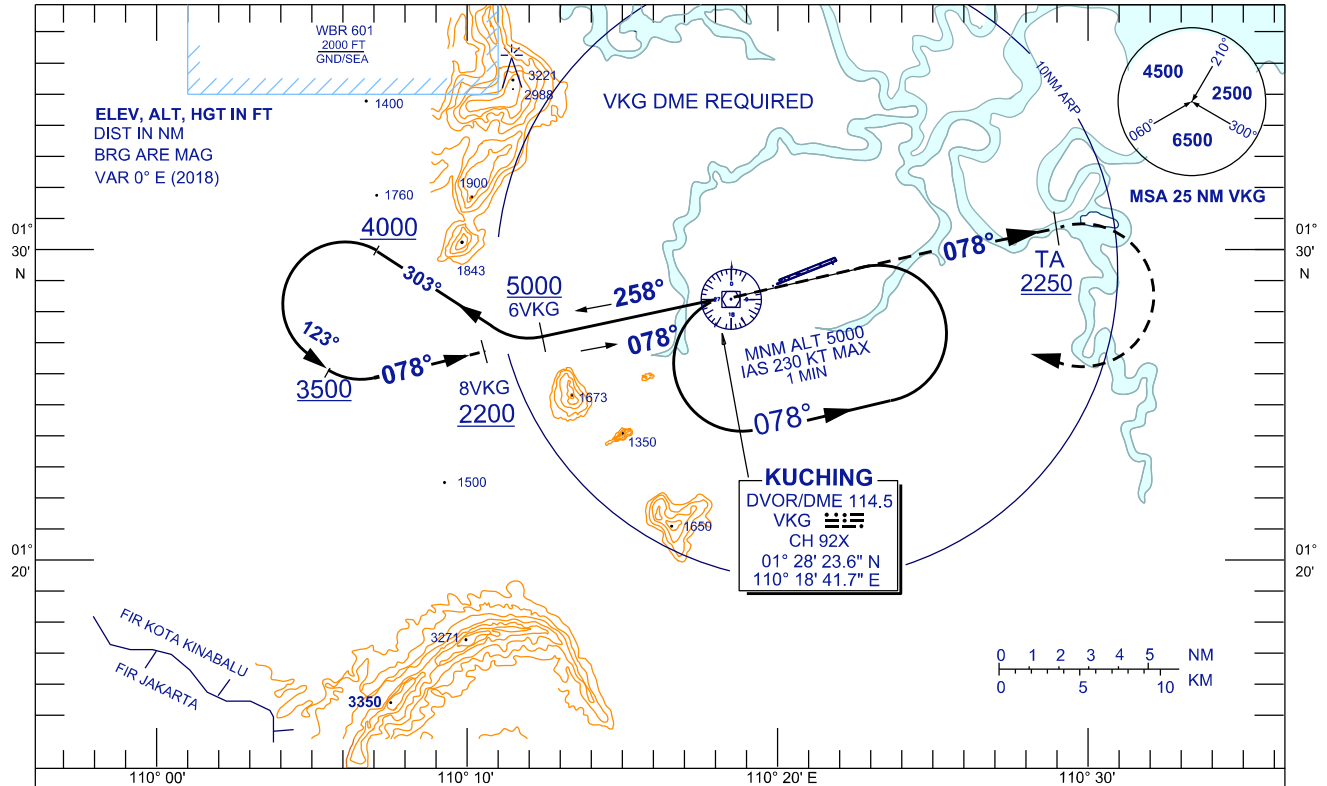
**INSTRUMENT
APPROACH
CHART - ICAO**

AERODROME ELEV 88 FT
HEIGHTS RELATED TO
THR RWY 07 - ELEV 88 FT

TWR	118.1 (P)	SMC	121.9
	121.7 (S)	ATIS	128.4
APP	120.2 (P)	FIS	134.75
	123.85 (S)		
ACC	134.5(P)		
	125.35 (S)		

**KUCHING/KUCHING (WBGG)
RWY 07**

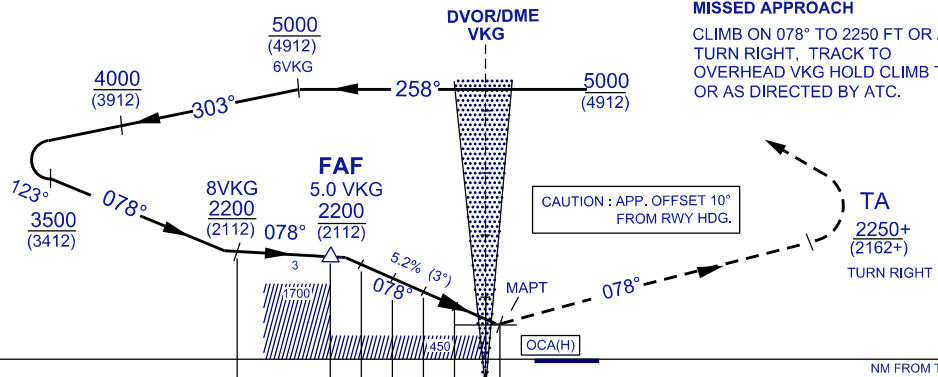
VOR Y
(FROM OVERHEAD VKG)



DISTANCE BY DME (NM)	FAF/5.0	4.0	3.0	2.0	1.0	MAPT/-0.3
ALT 3° APCH PATH (FT)	2200(2112)	1882(1794)	1564(1476)	1246(1158)	928(840)	524(436)

USE QNH

TRANSITION ALT 11000



MISSED APPROACH

CLIMB ON 078° TO 2250 FT OR ABOVE
TURN RIGHT, TRACK TO
OVERHEAD VKG HOLD CLIMB TO 5000,
OR AS DIRECTED BY ATC.

CAUTION : APP. OFFSET 10°
FROM RWY HDG.

THR ELEV 88
(THR RWY 07)

NM FROM VOR VKG

OCA (H) FT	A	B	C	D
STRAIGHT-IN APPROACH	524 (436)			
CIRCLING	750 (662)	750 (662)	1200 (1112)	1200 (1112)

GROUND SPEED(KT)		70	90	120	150	180	
FAF - MAPT = 5.3NM	MIN : SEC	5:39	4:24	2:39	2:38	2:12	
RATE OF DESCENT (3°)		FT/ MIN	406	479	639	799	959

CHANGES : FAF CHANGE TO 5.0 VKG