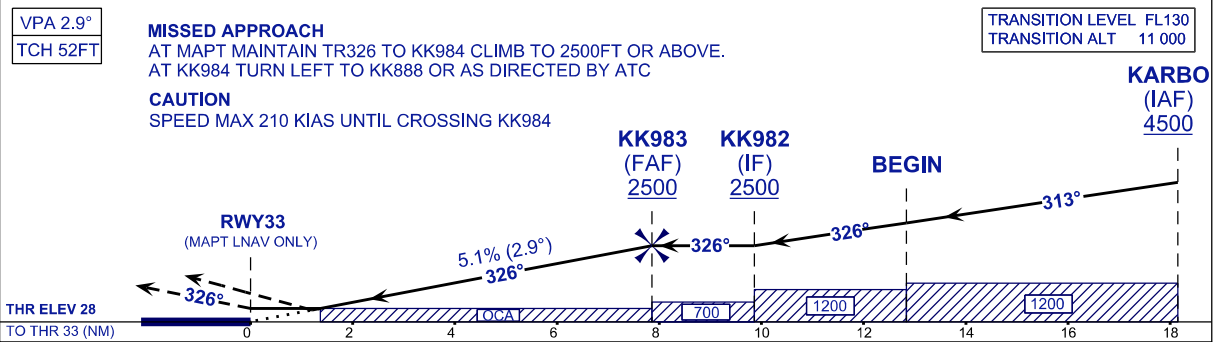
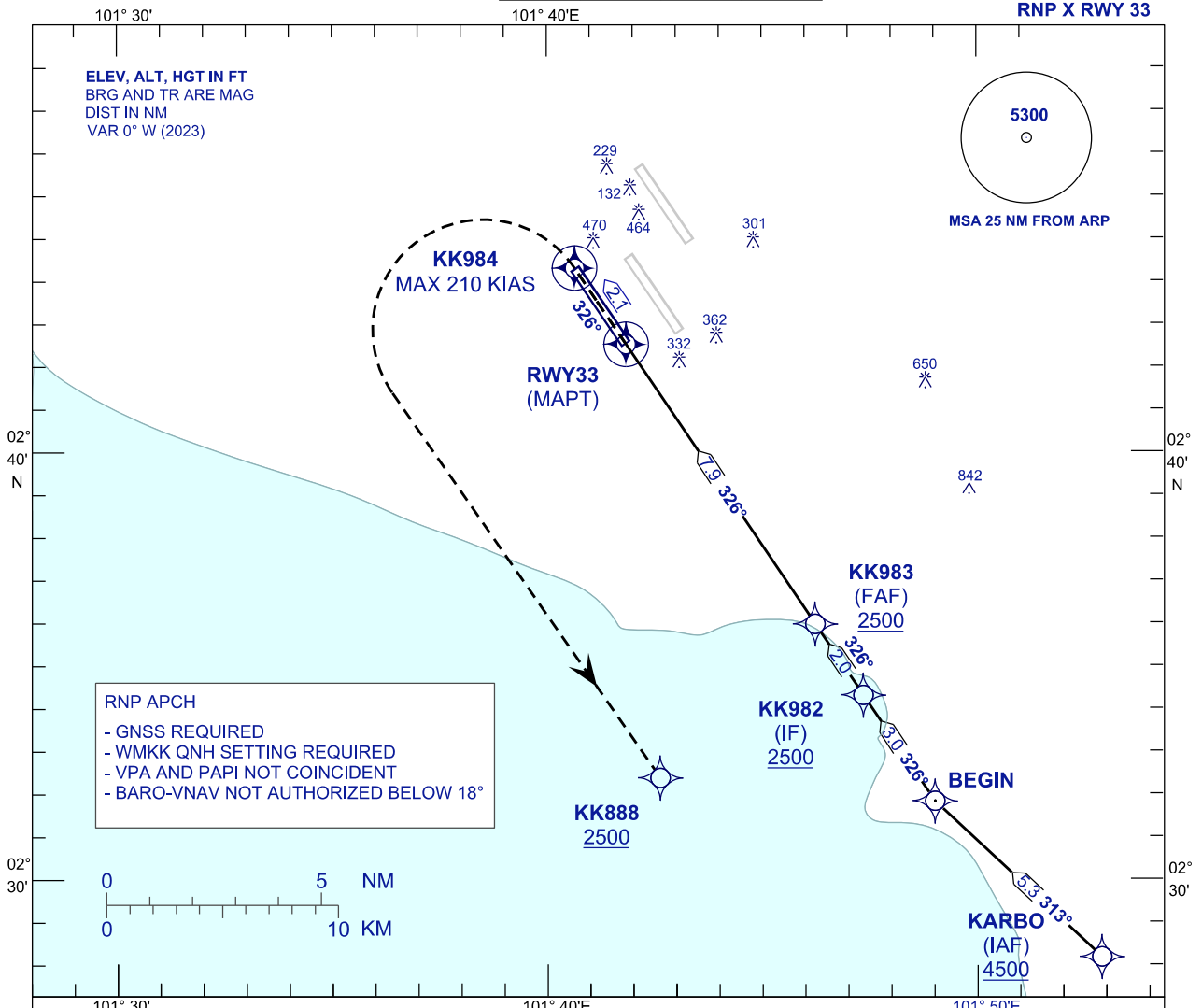


**INSTRUMENT
APPROACH
CHART - ICAO**

AERODROME ELEV 69 FT
HEIGHT RELATED TO
THR RWY 33 - ELEV 28 FT

APP	TWR	SMC	ATIS
119.45 125.85 125.10	119.80	118.050	128.05

**SEPANG/KL INTERNATIONAL
AIRPORT (WMKK)**



STRAIGHT-IN APPROACH	OCA (OCH)				GROUND SPEED (GS)							
CATEGORY OF AIRCRAFT	A	B	C	D	KNOTS	80	100	120	140	160	180	
LNAV / VNAV	500 (472)				FAF - RWY33 (7.9 NM)	MIN:SEC	5:54	4:43	3:56	3:22	2:57	2:37
LNAV	500 (472)				RATE OF DESCENT (318.5 FT/NM)	FT/MIN	410	510	620	720	820	920
DIST THR / RWY33		NM	7.9	7.0	6.0	5.0	4.0	3.0	2.0	1.0		
ALTITUDE		FT	2500	2235	1927	1620	1312	1004	696	388		

CHANGES : NEW CHART.