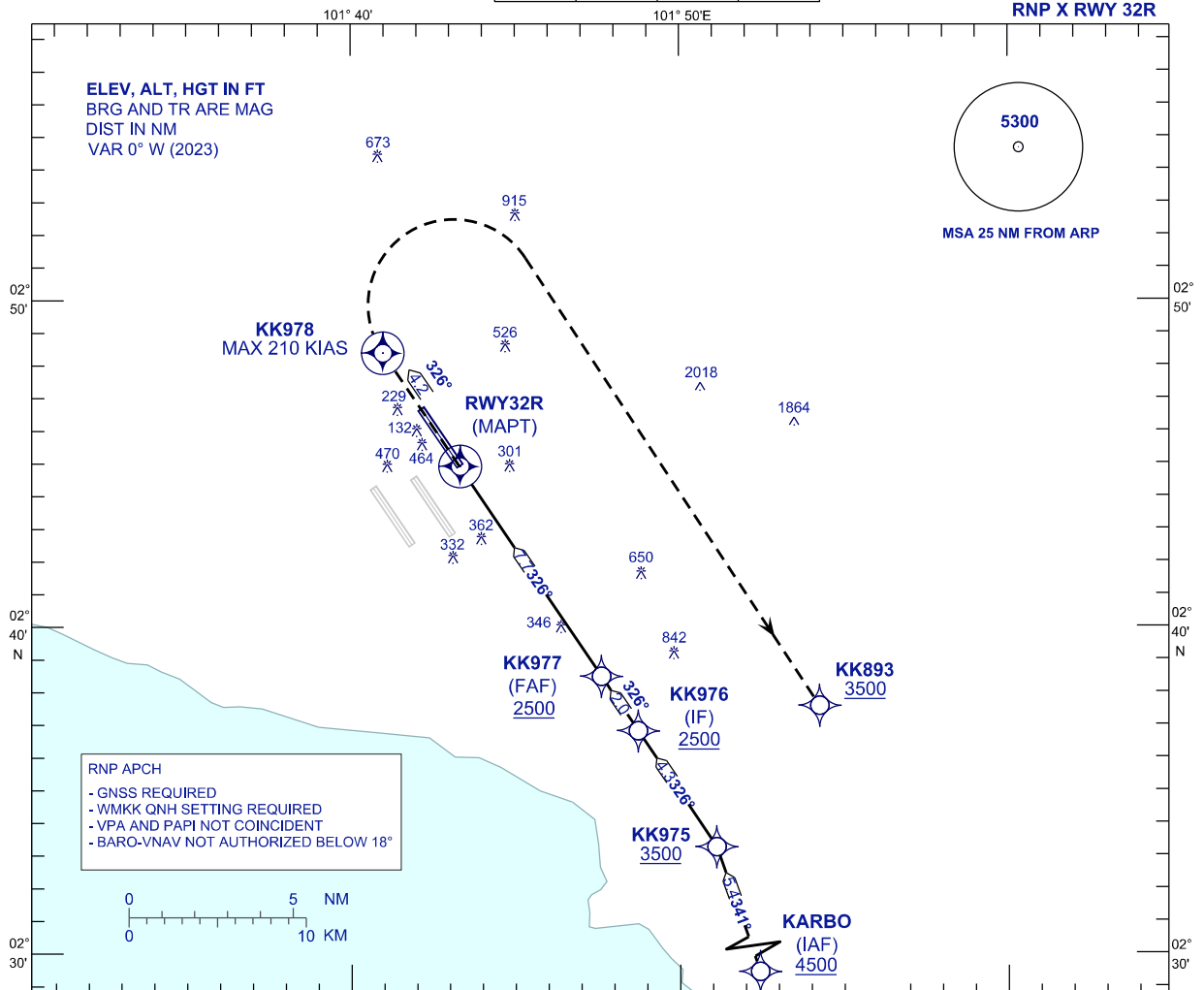


**INSTRUMENT  
APPROACH  
CHART - ICAO**

**AERODROME ELEV 69 FT**  
HEIGHT RELATED TO  
THR RWY 32R - ELEV 69 FT

APP	TWR	SMC	ATIS
121.25 120.35 135.75	118.80	121.65	128.05

**SEPANG/KL INTERNATIONAL  
AIRPORT (WMCK)**

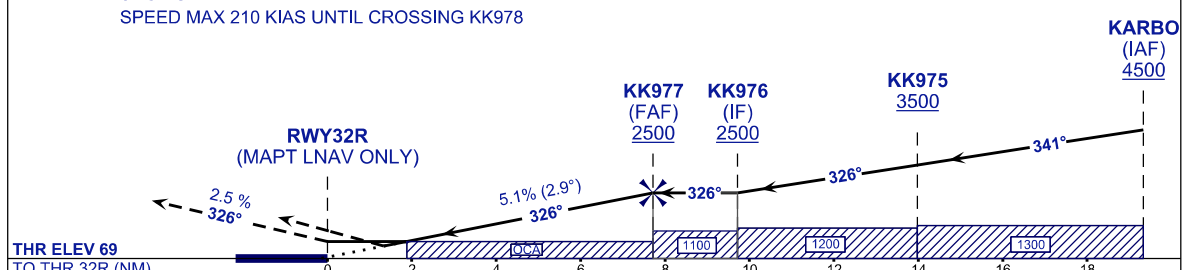


**VPA 2.9°**  
**TCH 56FT**

**MISSED APPROACH**  
AT MAPT TR326 TO KK978 CLIMB TO 3500FT OR ABOVE. AT KK978 TURN RIGHT TO KK893 OR AS DIRECTED BY ATC.

**CAUTION**  
SPEED MAX 210 KIAS UNTIL CROSSING KK978

**TRANSITION LEVEL FL130**  
**TRANSITION ALT 11 000**



STRAIGHT-IN APPROACH	OCA (OCH)				GROUND SPEED (GS)	KNOTS	80	100	120	140	160	180		
CATEGORY OF AIRCRAFT	A	B	C	D	FAF - RWY32R (7.7 NM)	MIN:SEC	5:47	4:38	3:51	3:18	2:54	2:34		
LNAV / VNAV	601 (532)				RATE OF DESCENT (5.1% / 2.9°)	FT/MIN	410	510	620	720	820	920		
LNAV	700 (631)				DIST THR / RWY32R	NM	7.7	7.0	6.0	5.0	4.0	3.0	2.0	1.0
					ALTITUDE	FT	2500	2280	1972	1665	1357	1049	741	433

CHANGES : NEW CHART.