

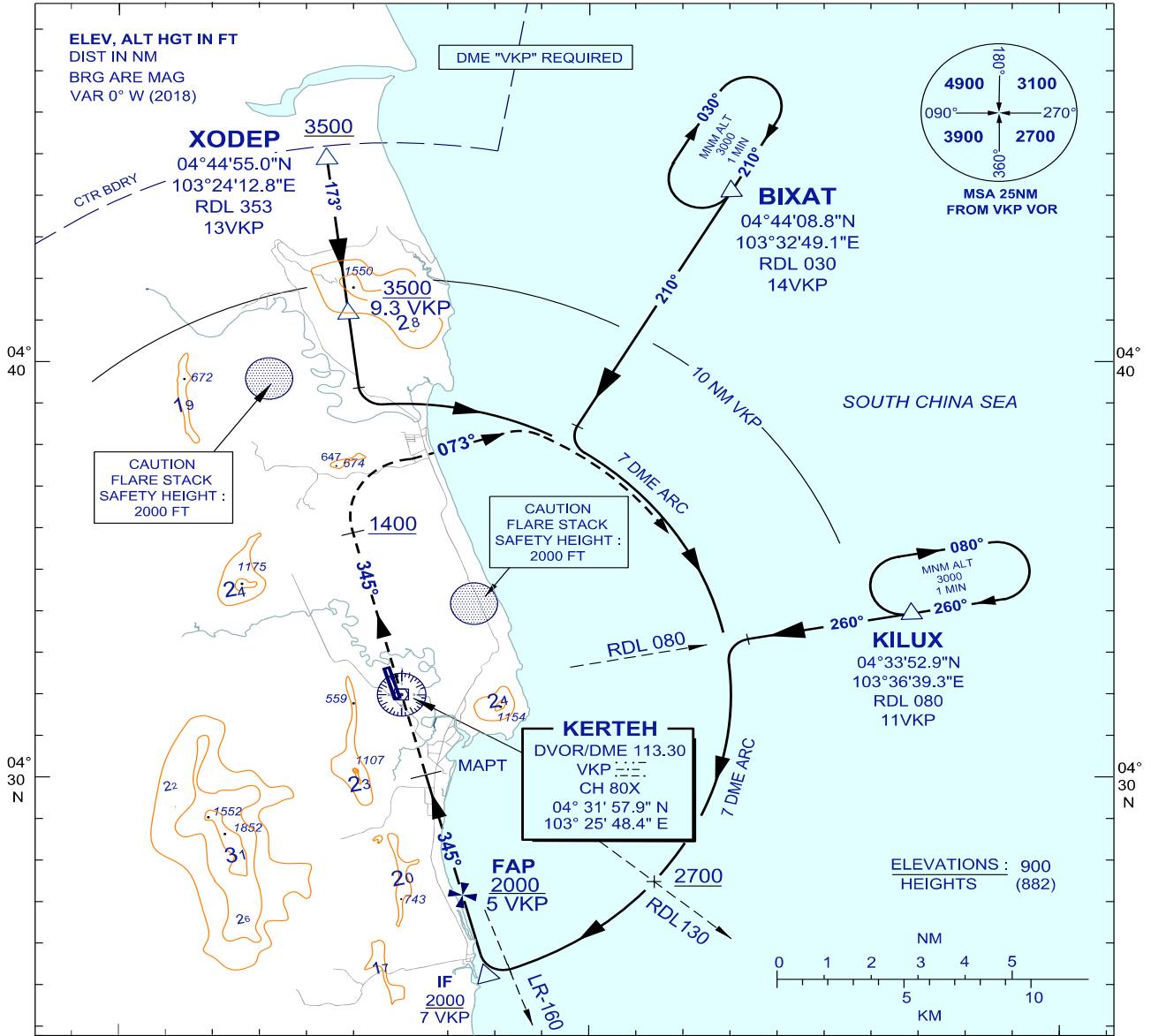
**INSTRUMENT
APPROACH
CHART - ICAO**

AERODROME ELEV 18 FT
HEIGHTS RELATED TO
THR RWY 34 - ELEV 18 FT

TWR 123.3
258.5
SMC 121.8
ATIS 128.25

**KERTEH/KERTEH (WMKE)
RWY 34**

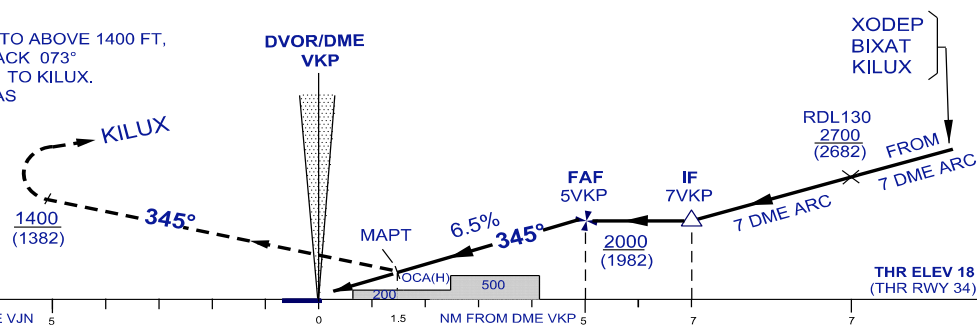
VOR X
CAT H



TRANSITION ALT 11000 103° 30 E 103° 40

DIST BY DME (VKB)	5	4	3	2	1.5
ALT 6.5% APCH PATH (FT)	2000 (1982)	1605 (1587)	1210 (1192)	815 (797)	610 (592)

MISSED APPROACH
CLIMB ON TRACK 345° TO ABOVE 1400 FT,
THEN TURN RIGHT, TRACK 073°
TO FLY ON 7 DME ARC TO KILUX.
CLIMB TO 3000 FT, OR AS
DIRECTED BY ATC



OCA (H) FT		CAT H		GROUND SPEED (KT)		
STRAIGHT-IN APPROACH	VOR / DME	610 (592) / 1.5 DME VKB		70	90	110
CIRCLING / MNM VIS (NM)		CIRCLING NOT PERMITTED		FAF - MAPT = 3.5 NM		
				MIN : SEC		
				3.00 2:20 1:55		
				RATE OF DESCENT (6.5%)		
				FT/ MIN		
				463 595 726		

CHANGES : UPDATING THE CHART FORMAT