

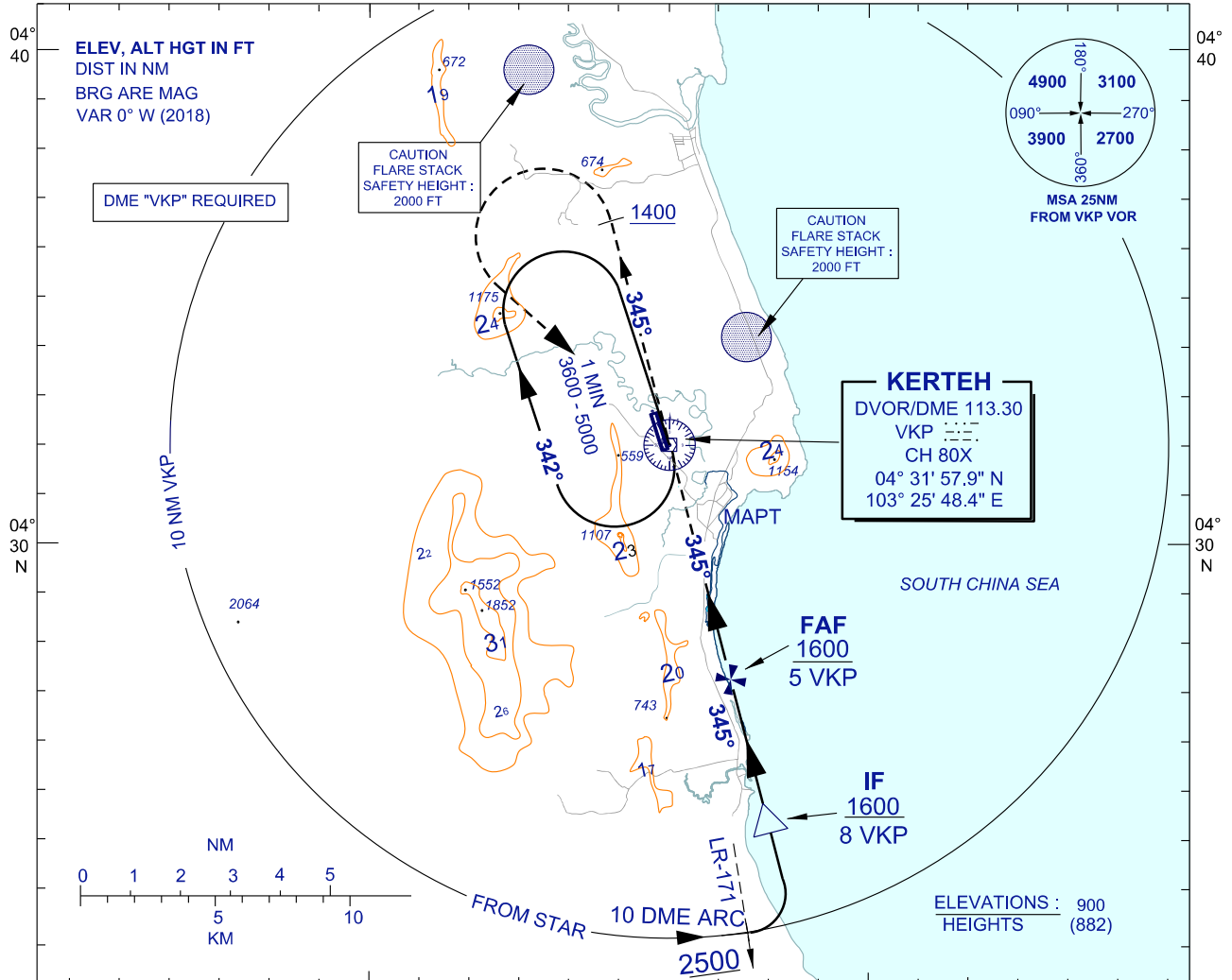
**INSTRUMENT
APPROACH
CHART - ICAO**

AERODROME ELEV 18 FT
HEIGHTS RELATED TO
THR RWY 34 - ELEV 18 FT

TWR 123.3
258.5
SMC 121.8
ATIS 128.25

**KERTEH/KERTEH (WMKE)
RWY 34**

VOR Z

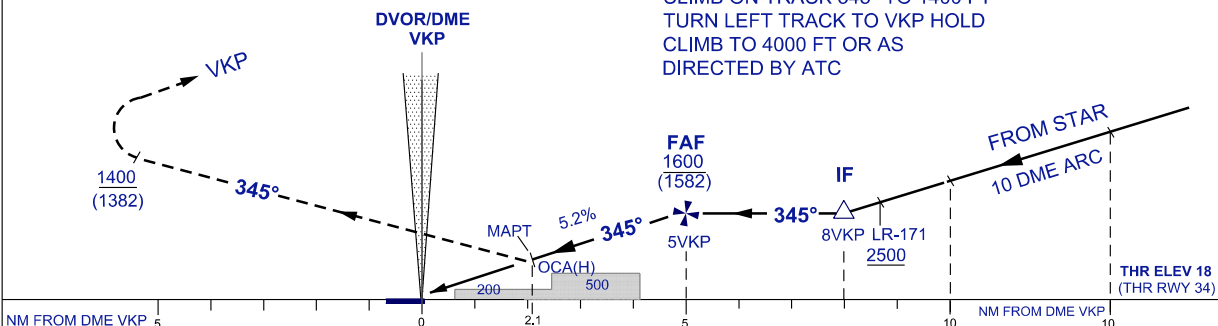


TRANSITION ALT 11000

103° 20' 103° 30'E

DIST BY DME (VKP)	5	4	3	2.1
ALT 5.2% APCH PATH (FT)	1600 (1582)	1282 (1264)	964 (946)	650 (632)

MISSED APPROACH
CLIMB ON TRACK 345° TO 1400 FT
TURN LEFT TRACK TO VKP HOLD
CLIMB TO 4000 FT OR AS
DIRECTED BY ATC



OCA (H) FT	A	B
STRAIGHT-IN APPROACH	VOR/DME	650 (632)/ 2.1 DME
CIRCLING/MNM VIS(NM)	CIRCLING NOT PERMITTED	

GROUND SPEED(KT)	70	90	110	140	
FAF - MAPT = 2.9 NM	MIN : SEC	2:25	1:54	1:35	1:15
RATE OF DESCENT (5.2%)	FT/ MIN	384	480	587	745

CHANGES : UPDATING THE CHART FORMAT