

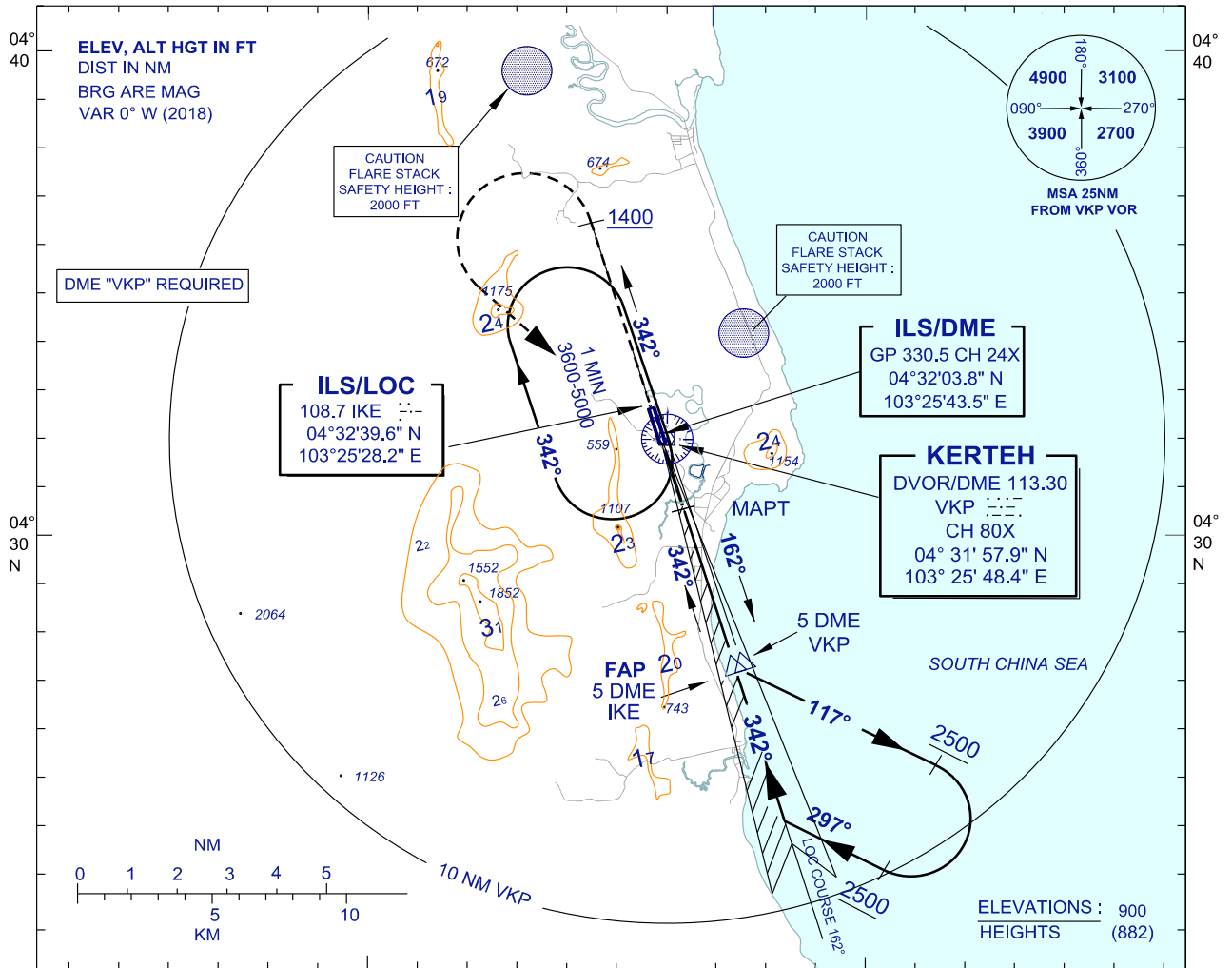
**INSTRUMENT
APPROACH
CHART - ICAO**

AERODROME ELEV 18 FT
HEIGHTS RELATED TO
THR RWY 34 - ELEV 18 FT

TWR 123.3
258.5
SMC 121.8
ATIS 128.25

**KERTEH/KERTEH (WMKE)
RWY 34**

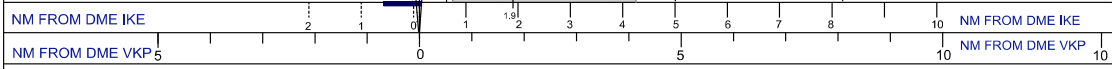
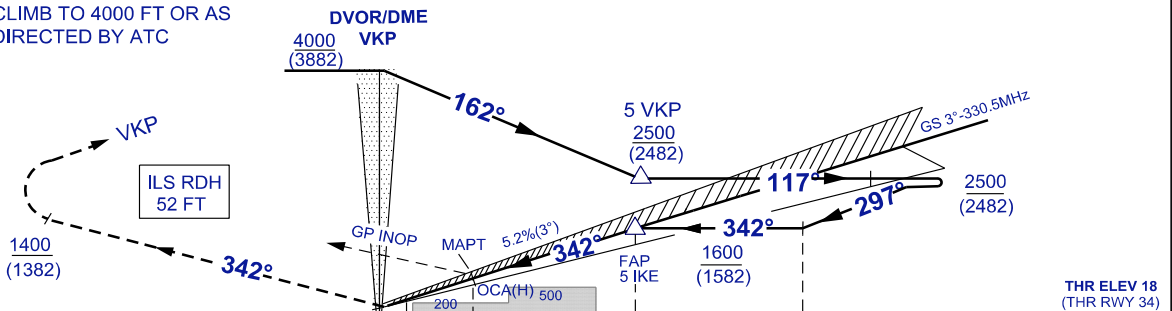
ILS Y OR LOC Y



TRANSITION ALT 11000

DIST BY DME (IKE)	5	4	3	1.9
ALT 3° APCH PATH (FT)	1600 (1582)	1282 (1264)	964 (946)	620 (602)

MISSED APPROACH
CLIMB ON TRACK 342° TO 1400 FT
TURN LEFT TRACK TO VKP HOLD
CLIMB TO 4000 FT OR AS
DIRECTED BY ATC



STRAIGHT-IN APPROACH	OCA (H) FT	A	B
	CAT 1	300 (282)	310 (292)
	LOC	620 (602) / 1.9 DME	
	CIRCLING/MNM VIS (NM)	CIRCLING NOT PERMITTED	

GROUND SPEED (KT)		70	90	110	140	
FAP - MAPT = 3.1 NM	MIN : SEC	2:35	2:04	1:50	1:20	
RATE OF DESCENT (3°)		FT / MIN	379	474	535	738

CHANGES : UPDATING THE CHART FORMAT