

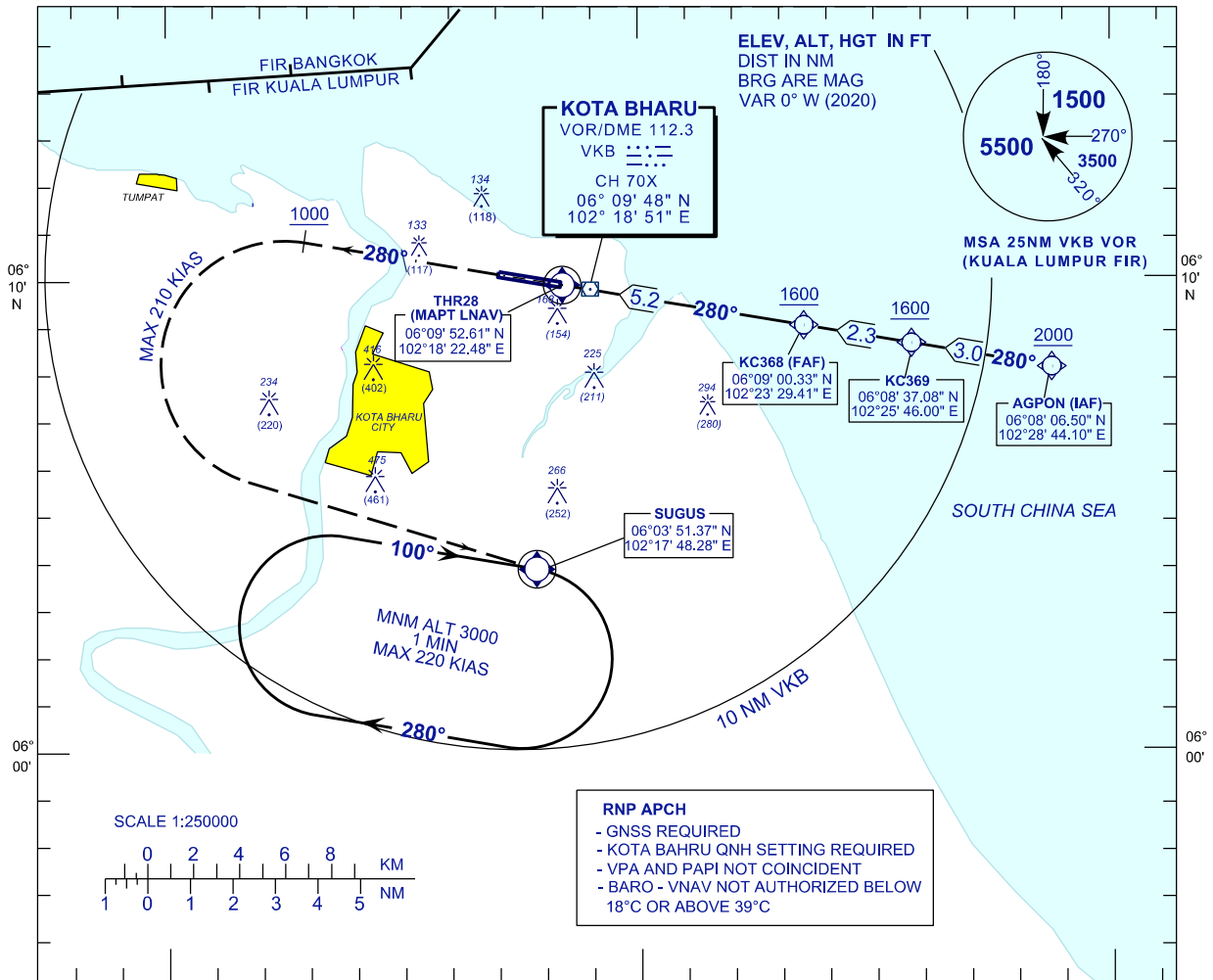
**INSTRUMENT
APPROACH
CHART - ICAO**

AERODROME ELEV 16FT
HEIGHT RELATED TO
THR RWY28 - ELEV 13 FT

APP 120.85,130.3
TWR 122.5
SMC 121.6
ATIS 128.85

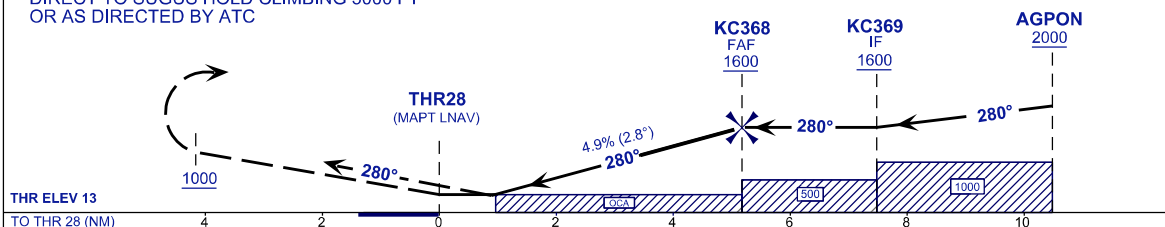
**KOTA BHARU/
SULTAN ISMAIL PETRA (WMKC)**

RNP Y RWY 28



RNP APCH
- GNSS REQUIRED
- KOTA BAHRU QNH SETTING REQUIRED
- VPA AND PAPI NOT COINCIDENT
- BARO - VNAV NOT AUTHORIZED BELOW 18°C OR ABOVE 39°C

MISSED APPROACH:
TRACK 280° AT 1000 FT OR ABOVE TURN LEFT
DIRECT TO SUGUS HOLD CLIMBING 3000 FT
OR AS DIRECTED BY ATC



OCA (OCH)	A	B	C	D
LNAV	400 (384)			
LNAV/VNAV	350 (337)	360 (347)	370 (357)	380 (367)

DIST RWY28	NM	5.2	4.2	3.2	2.2	1.3
ALTITUDE	FT	1600	1280	980	680	400
GS	KT	100	120	140	160	180
FAF - RW28 (5.2 NM)	MIN:SEC	3:06	2:36	2:13	1:57	1:44
RATE OF DESCEND (297 FT / NM)	FT/MIN	490	590	690	790	890

CHANGES : MAGNETIC VARIATION