

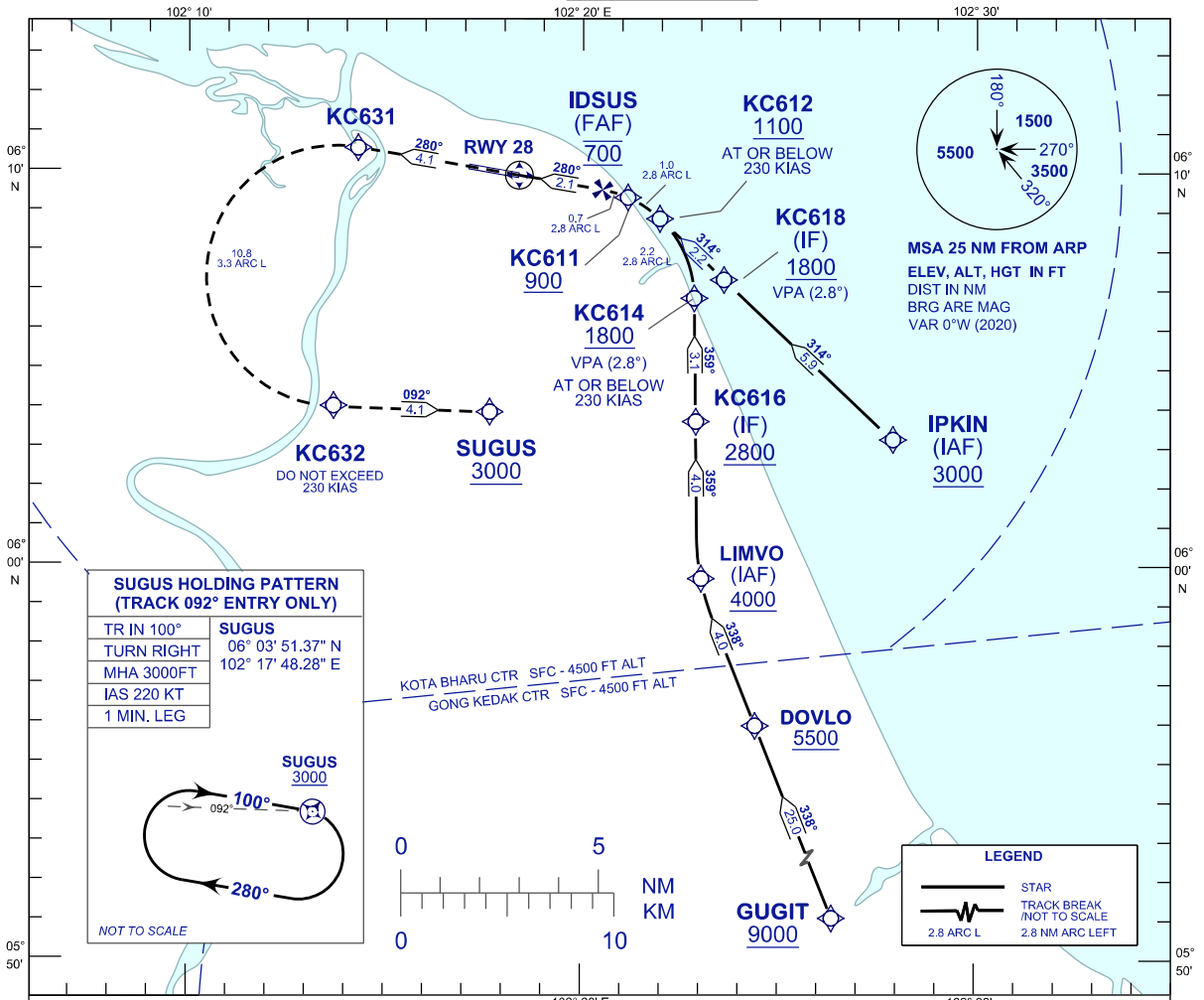
**INSTRUMENT  
APPROACH  
CHART - ICAO**

**AERODROME ELEV 16 FT**  
HEIGHT RELATED TO  
THR RWY 28 - ELEV 13 FT

APP 120.85, 130.3  
TWR 122.5  
SMC 121.6  
ATIS 128.85

**KOTA BHARU/  
SULTAN ISMAIL PETRA (WMKC)**

**RNP Z RWY 28 (AR)**



**SUGUS HOLDING PATTERN  
(TRACK 092° ENTRY ONLY)**

TR IN 100°	SUGUS
TURN RIGHT	06° 03' 51.37" N
MHA 3000FT	102° 17' 48.28" E
IAS 220 KT	
1 MIN. LEG	

NOT TO SCALE

**MISSED APPROACH**  
CLIMB TO 3000 FT ON RNP MISSED APPROACH TRACK TO SUGUS OR AS DIRECTED BY ATC.

VPA 2.8°  
RDH 50 FT

TRANSITION LEVEL FL130  
TRANSITION ALT 11000 FT

VSS PENETRATIONS 500 M PRIOR TO THR.

THR ELEV 13 NM FROM THR

STRAIGHT-IN APPROACH	OCA (OCH)	
CATEGORY OF AIRCRAFT	C	D
RNP (0.30)	440 (427)	
CIRCLING AND ALTERNATE N/A		

AUTHORIZATION REQUIRED

- NOTES:**
- 1) APPROACH NOT AUTHORIZED WHEN AIRPORT TEMPERATURE BELOW 18°C OR ABOVE 39°C.
  - 2) RF REQUIRED.
  - 3) WMKC ALTIMETER SETTING REQUIRED.
  - 4) GNSS REQUIRED.
  - 5) PAPI AND VERTICAL PATH ANGLE NOT COINCIDENT.
  - 6) RNP 1.0 REQUIRED FROM GUGIT TO IAF.
  - 7) RNP 0.3 REQUIRED FROM IAF'S TO FAF.
  - 8) DUE TO GONG KEDAK CTR, MAINTAIN 4500 FT OR ABOVE UNTIL 2.4 NM TO LIMVO.

CHANGES : MAGNETIC VARIATION