

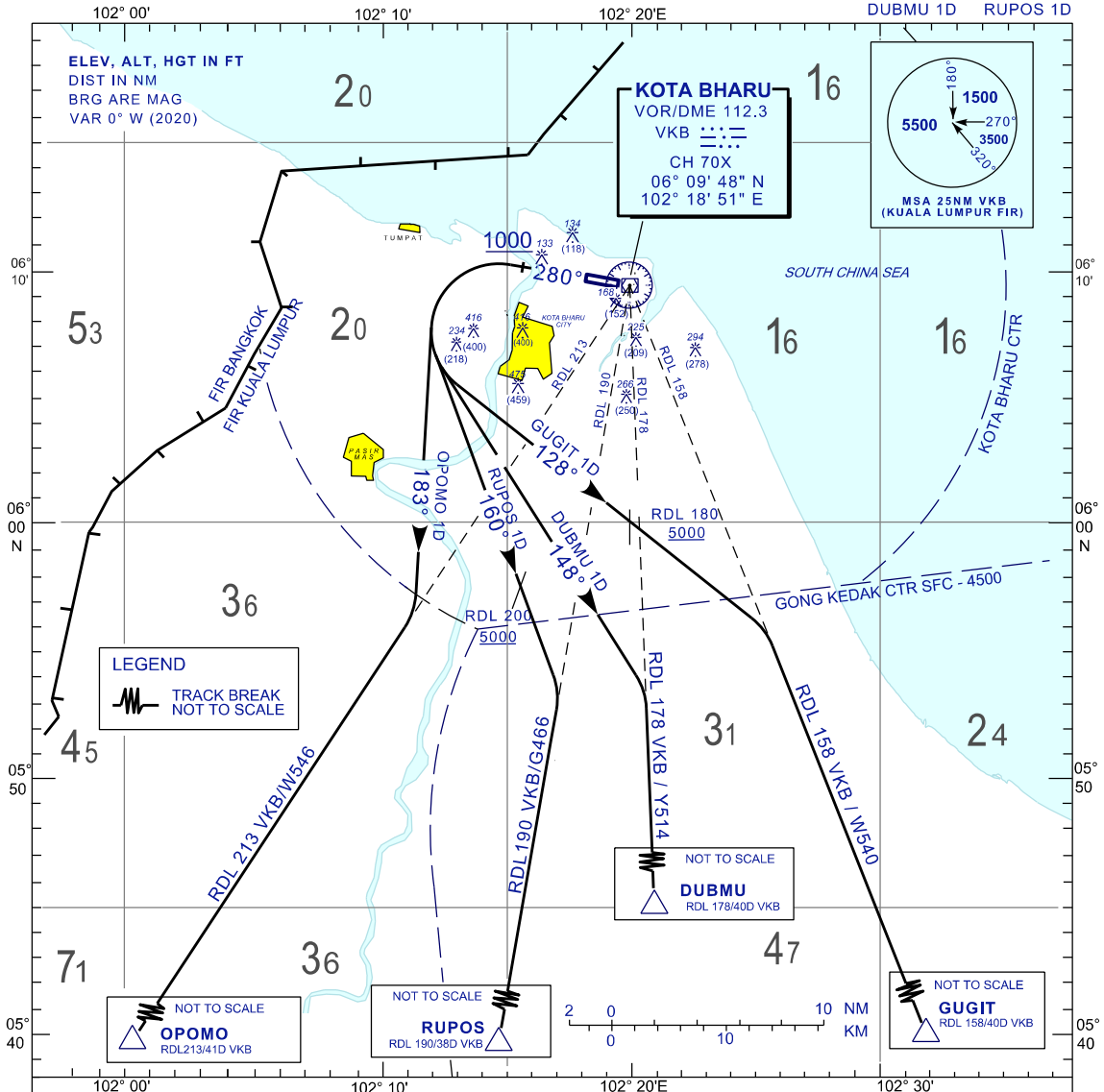
**STANDARD DEPARTURE CHART
INSTRUMENT (SID) - ICAO**

**KOTA BHARU/
SULTAN ISMAIL PETRA (WMKC)
RWY 28**

TRANSITION ALTITUDE
11 000 FT

APP 120.85,130.3
TWR 122.5
SMC 121.6
ATIS 128.85

OPOMO 1D DUBMU 1D
GUGIT 1D RUPUS 1D



RUPOS ONE DELTA DEPARTURE (RUPOS 1D)

TRACK HEADING 280° AT 1000FT TURN LEFT
HEADING 160° TO INTERCEPT RDL190 VKB
VOR TO RUPUS / G466

NOTE*
1. PDG 5.2% UNTIL REACHING 5000FT
2. CROSS R-200 VKB VOR AT 5000FT OR ABOVE

OPOMO ONE DELTA DEPARTURE (OPOMO 1D)

TRACK HEADING 280° AT 1000FT TURN LEFT
HEADING 183° TO INTERCEPT RDL213 VKB
VOR TO OPOMO / W546

NOTE*
1. PDG 5.2% UNTIL REACHING 5000FT

GUGIT ONE DELTA DEPARTURE (GUGIT 1D)

TRACK HEADING 280° AT 1000FT TURN LEFT
HEADING 128° TO INTERCEPT RDL158 VKB VOR TO GUGIT / W540

NOTE*
1. PDG 5.2% UNTIL REACHING 5000FT

2. CROSS RDL180 VKB VOR AT 5000FT OR ABOVE

DUBMU ONE DELTA DEPARTURE (DUBMU 1D)

TRACK HEADING 280° AT 1000FT TURN LEFT
HEADING 148° TO INTERCEPT RDL178 VKB VOR TO DUBMU / Y514

NOTE*
1. PDG 5.2% UNTIL REACHING 5000FT
2. CROSS RDL190 VKB VOR AT 5000FT OR ABOVE

RATE OF CLIMB (FT)		120	150	180	210	240	270
GRADIENT	3.3%	401	501	601	701	802	902
	5.2%	672	790	948	1106	1264	1421

COMMUNICATION FAILURE :

- SQUAWK 7600
- IF UNDER PILOT NAVIGATION, MAINTAIN LAST ASSIGNED LEVEL FOR 3 MINUTE, IF NO ONWARD CLEARANCE IS RECEIVED, SUBSEQUENTLY CLIMB TO COMPLY WITH SID.
- IF UNDER RADAR VECTORED, MAINTAIN VECTOR FOR 2 MINUTES
- IF BELOW MSA, CLIMB TO MSA, THEN TRACK TO INTERCEPT CLEARED OR PREVIOUSLY ASSIGNED SID TO DESTINATION.

CHANGES : MAGNETIC VARIATION