

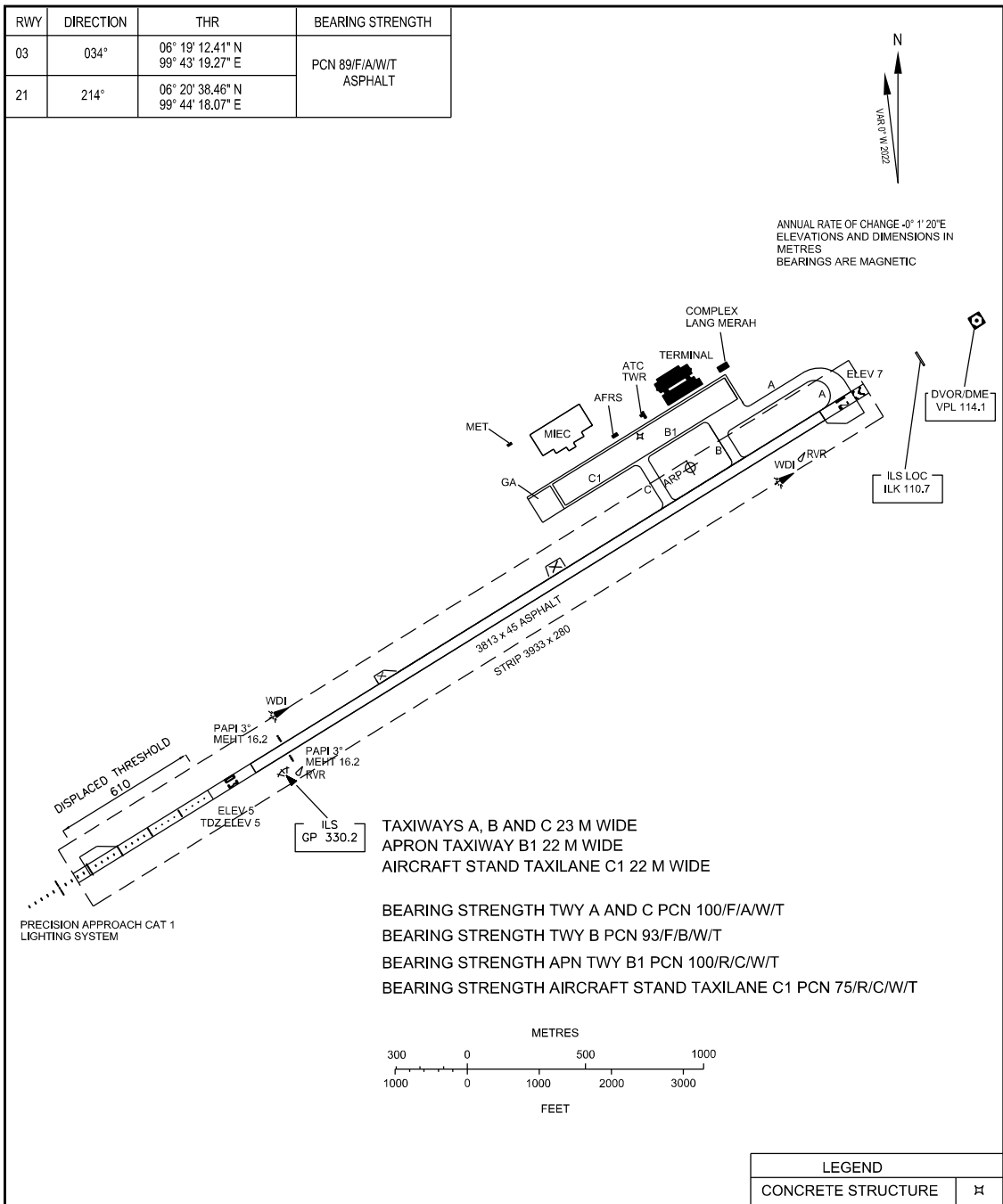
**AERODROME/HELIPORT
CHART - ICAO**

06° 20' 22" N
99° 44' 01" E

ELEV 7M

APP 119.4, 121.5
TWR 118.5
SMC 121.8
ATIS 128.2

**LANGKAWI/LANGKAWI
INTERNATIONAL AIRPORT**



- CHANGES:** CHANGE PATTERN OF APPROACH LIGHT
ADJUST BAR SCALE
CHANGE INFO ON APP FREQUENCY
CHANGE INFO ON RUNWAY DIRECTION (MAGNETIC BEARING)
CHANGE INFO ON MEHT VALUE
CHANGE INFO ON AERODROME ELEVATION