

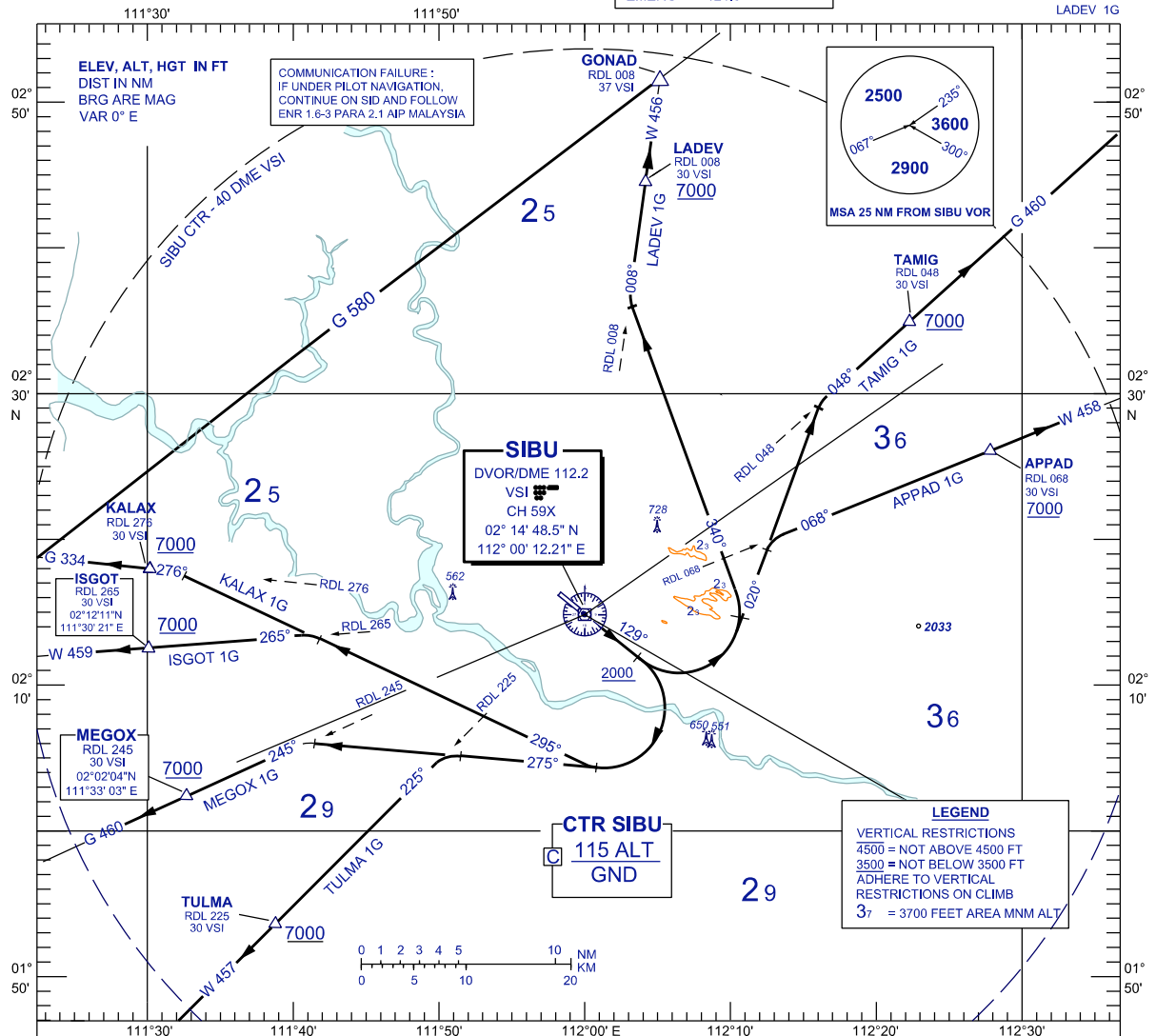
**STANDARD DEPARTURE CHART
INSTRUMENT (SID) - ICAO**

TRANSITION ALTITUDE
11 000 FT

APP	122.6(P), 124.4 (S)
TWR	123.2
SMC	121.9
ATIS	127.65
EMERG	121.5

**SIBU/SIBU (WBGS)
RWY 13**

TULMA 1G	ISGOT 1G	APPAD 1G
MEGOX 1G	KALAX 1G	TAMIG 1G
		LADEV 1G



TULMA ONE GOLF DEPARTURE
MEGOX ONE GOLF DEPARTURE
ISGOT ONE GOLF DEPARTURE
KALAX ONE GOLF DEPARTURE

RWY 13 (RIGHT TURN)
 CLIMB ON TRACK 129°. AT/ABOVE 2000 FT TURN RIGHT,

FOR TULMA 1G
 TRACK 275°
 INTERCEPT RDL 225 VSI VOR OUTBOUND TO TULMA

FOR MEGOX 1G
 TRACK 275°
 INTERCEPT RDL 245 VSI VOR OUTBOUND TO MEGOX

FOR ISGOT 1G
 TRACK 295°
 INTERCEPT RDL 265 VSI VOR OUTBOUND TO ISGOT

FOR KALAX 1G
 TRACK 295°
 INTERCEPT RDL 276 VSI VOR OUTBOUND TO KALAX

APPAD ONE GOLF DEPARTURE
TAMIG ONE GOLF DEPARTURE
LADEV ONE GOLF DEPARTURE

RWY 13 (LEFT TURN)
 CLIMB ON TRACK 129°. AT/ABOVE 2000 FT TURN LEFT

FOR APPAD 1G
 TRACK 020°
 INTERCEPT RDL 068 VSI VOR OUTBOUND TO APPAD

FOR TAMIG 1G
 TRACK 020°
 INTERCEPT RDL 048 VSI VOR OUTBOUND TO TAMIG

FOR LADEV 1G
 TRACK 340°
 INTERCEPT RDL 008 VSI VOR OUTBOUND TO LADEV

CHANGES : UPDATING THE FORMAT CHART