

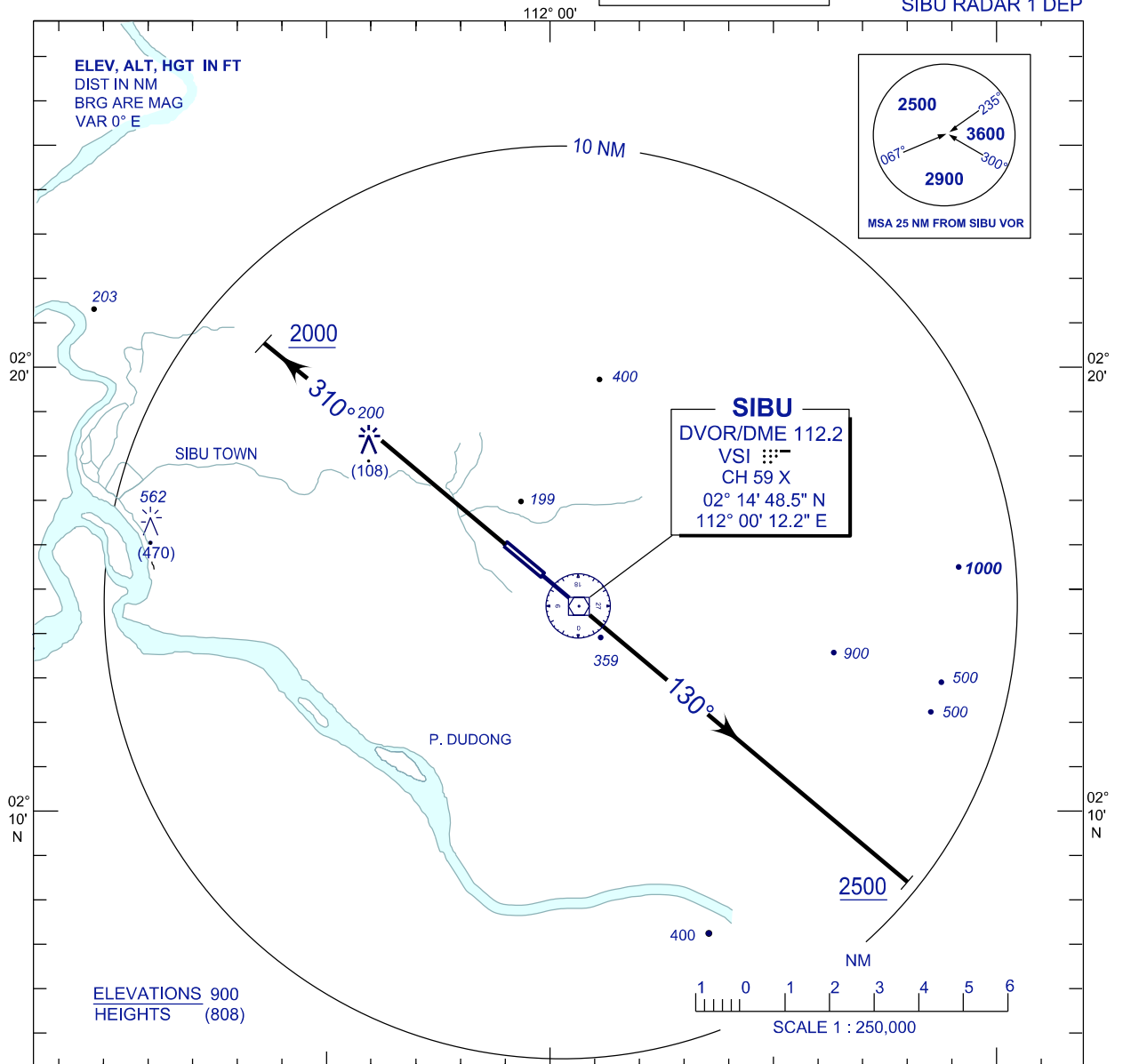
**STANDARD DEPARTURE CHART
INSTRUMENT (SID) - ICAO**

TRANSITION ALTITUDE
11 000FT

APP	122.6 (P), 124.4 (S)
TWR	123.2
SMC	121.9
ATIS	127.65
EMERG	121.5

**SIBU/SIBU (WBGS)
RWY 13/31**

SIBU RADAR 1 DEP



SIBU RADAR ONE DEPARTURE

RWY 13

TRACK HEADING 130°
ON PASSING 2500FT TURN TO ASSIGNED HEADING
CONTACT SIBU RADAR WHEN AIRBORNE

RWY 31

TRACK HEADING 310°
ON PASSING 2000FT TURN TO ASSIGNED HEADING
CONTACT SIBU RADAR WHEN AIRBORNE

COMMUNICATIONS FAILURE:

IMMEDIATELY SQUAWK 7600
MAINTAIN ASSIGNED HEADING - CLIMB TO MSA OR LAST ASSIGNED LEVEL IF HIGHER
MAINTAIN MSA OR ASSIGNED LEVEL, AS APPLICABLE FOR 2 MINUTES
THEN CLIMB TO FLIGHT PLANNED LEVEL AND INTERCEPT FLIGHT PLANNED TRACK
(AS AMMENDED BY ATC, IF APPLICABLE)

CHANGES : UPDATING THE CHART FORMAT