

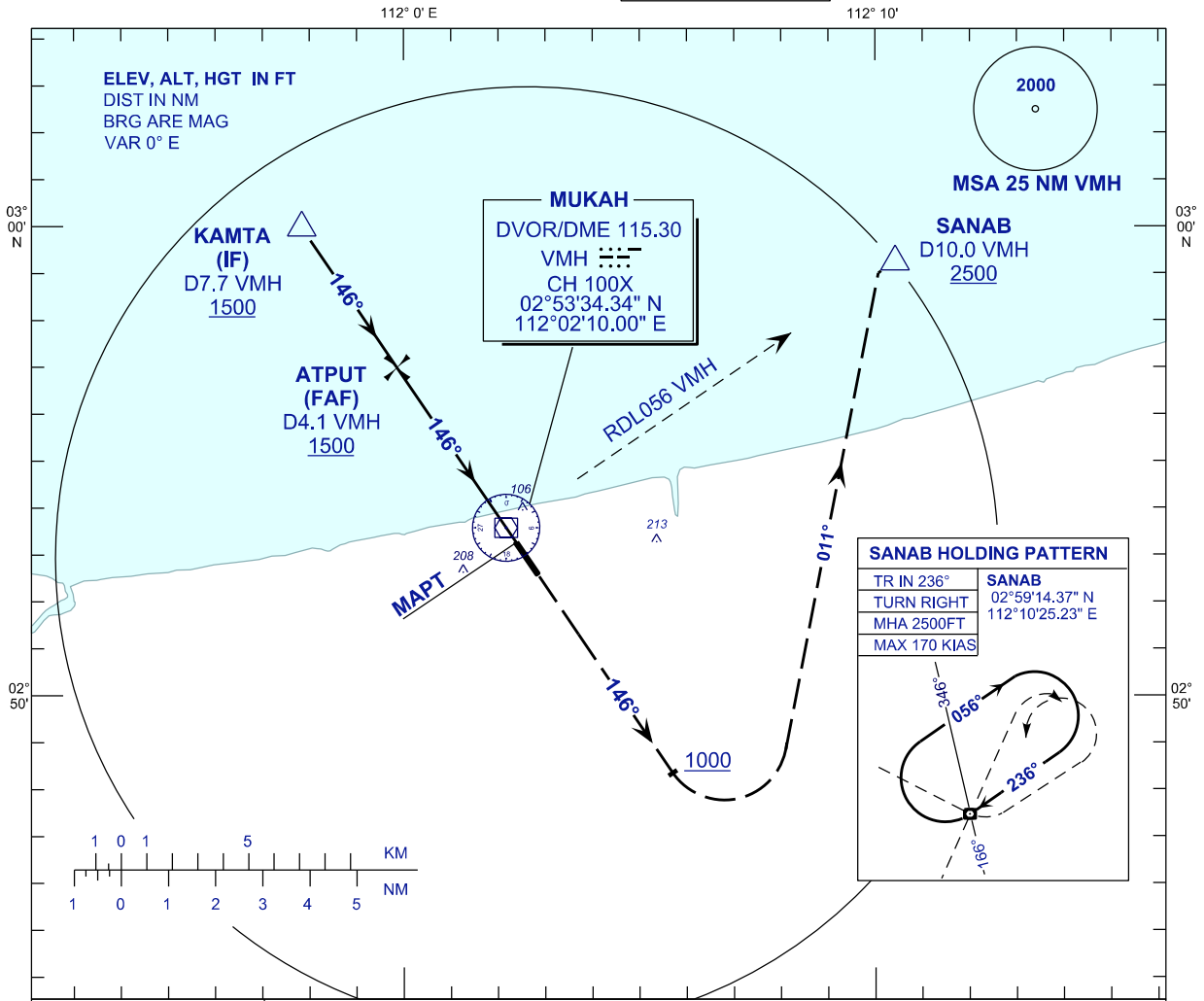
**INSTRUMENT
APPROACH
CHART - ICAO**

AERODROME ELEV 20 FT
HEIGHTS RELATED TO
THR RWY 15 - ELEV 20 FT

TWR	118.300
SMC	118.075
ATIS	126.200

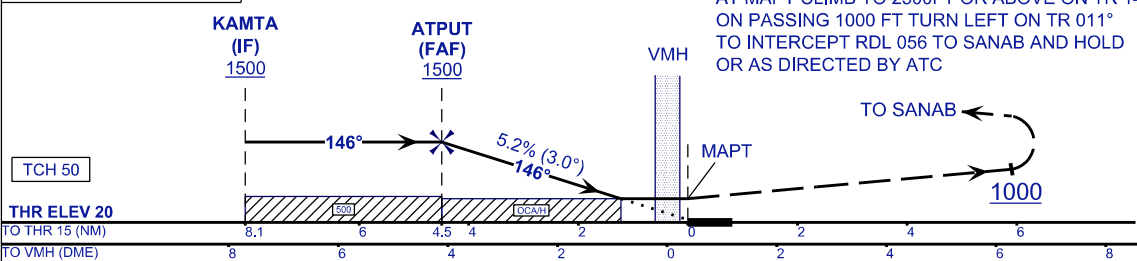
MUKAH/MUKAH(WBGK)

VOR Z RWY 15



TRANSITION LEVEL FL130
TRANSITION ALT 11 000

MISSED APPROACH
AT MAPT CLIMB TO 2500FT OR ABOVE ON TR 146°
ON PASSING 1000 FT TURN LEFT ON TR 011°
TO INTERCEPT RDL 056 TO SANAB AND HOLD
OR AS DIRECTED BY ATC



OCA / OCH	A	B
VOR/DME	460 (440)	
CIRCLING (MNM/VIS)	550 (530) / 1.0	550 (530) / 1.5

DME VMH	NM	4.1	3.0	2.0	1.0	0.0
DIST THR / RWY15	NM	4.5	3.4	2.4	1.4	0.4
ALTITUDE	FT	1500	1153	834	516	198

GROUND SPEED	KT	80	100	120	140	160	180
FAF - THR RWY15 (4.5NM)	MIN:SEC	3:22	2:42	2:15	1:55	1:41	1:30
RATE OF DESCEND(318.5FT/NM)	FT/MIN	420	530	640	740	850	960

CHANGES : AT SANAB HOLDING PATTERN, READ IAS 170 KT
TO MAX 170 KIAS