

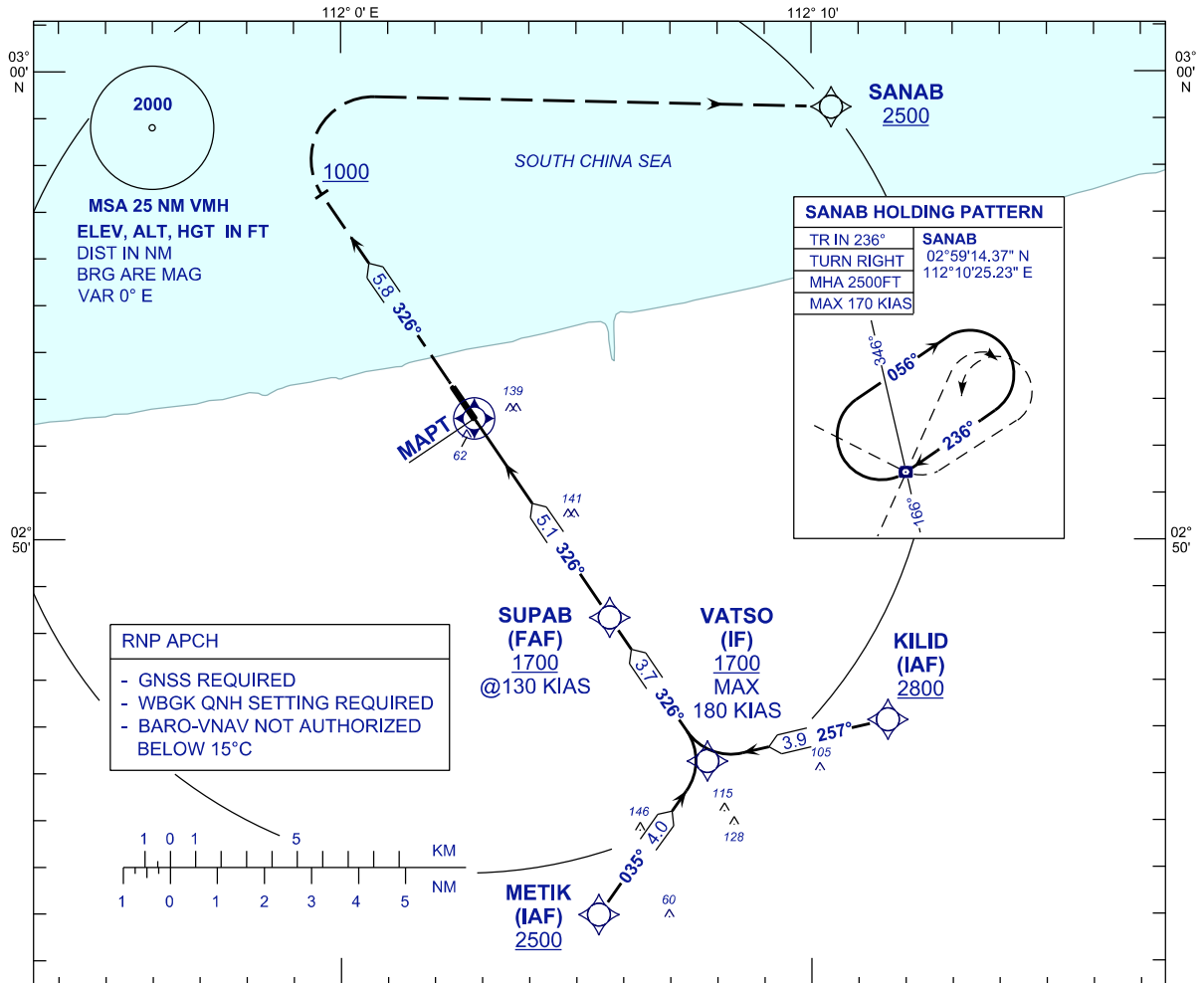
**INSTRUMENT
APPROACH
CHART - ICAO**

AERODROME ELEV 20 FT
HEIGHTS RELATED TO
THR RWY 33 - ELEV 20 FT

TWR	118.300
	118.425 (S)
SMC	118.075
ATIS	126.200

MUKAH/MUKAH(WBGK)

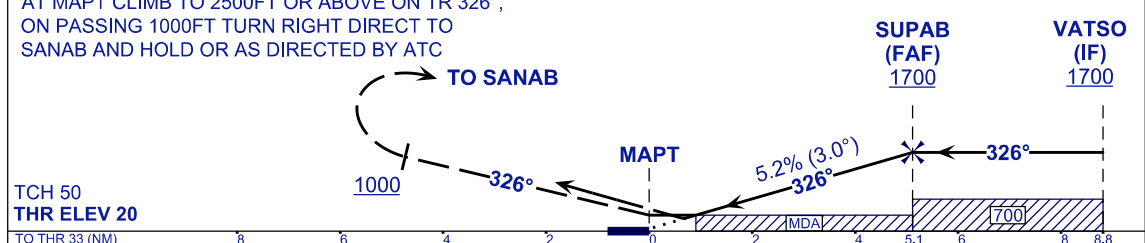
RNP Z RWY 33



MISSED APPROACH
AT MAPT CLIMB TO 2500FT OR ABOVE ON TR 326°,
ON PASSING 1000FT TURN RIGHT DIRECT TO
SANAB AND HOLD OR AS DIRECTED BY ATC

TO SANAB

TO THR 33 (NM)



OCA /OCH	A	B	DIST THR/RWY 33	5.1	4.0	3.0	2.0	1.0
LNAV	390 (370)		ALTITUDE (FT)	1700	1344	1025	707	389
LNAV/VNAV	280 (260)	290 (270)	GROUND SPEED (GS)	KT	80	100	120	140
CIRCLING	550(530)/1.0	550(530)/1.5	FAP - RWY33 (5.1 NM)	MIN:SEC	3:50	3:04	2:34	2:12
			RATE OF DESCEND (318.4 FT/NM)	FT/MIN	420	530	640	740
						850	960	

CHANGES : SUPAB SPEED LIMIT
VATSO SPEED LIMIT
ADD MSA CENTER POINT
AT PROFILE VIEW, READ KTS TO KT
AT SANAB HOLDING PATTERN, READ IAS 170 KT
TO MAX 170 KIAS