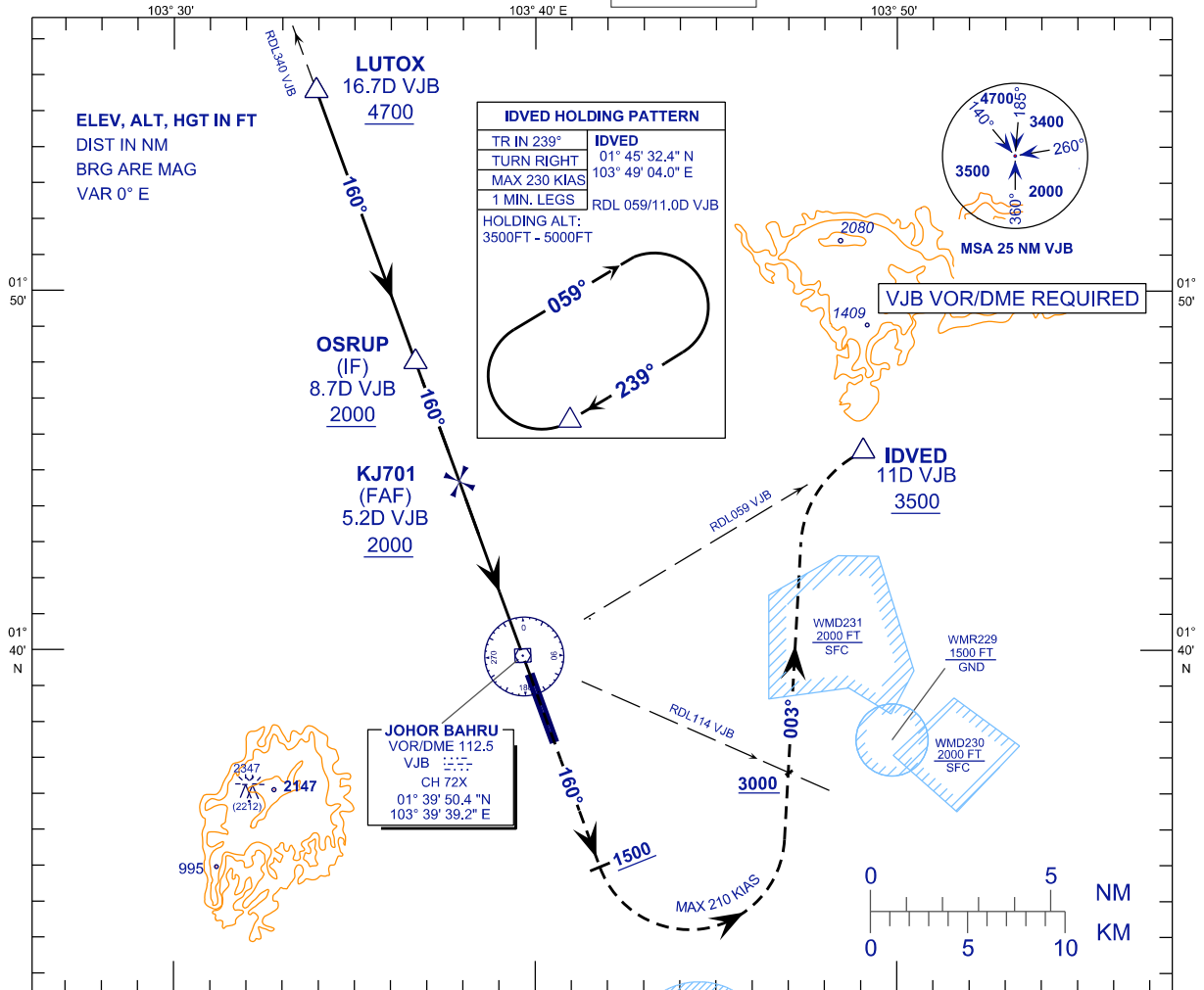


**INSTRUMENT  
APPROACH  
CHART - ICAO**

**AERODROME ELEV 135FT**  
HEIGHT RELATED TO  
THR RWY 16 - ELEV 135FT

APP	124.70 (P)
	121.05 (S)
TWR	118.15
SMC	121.80
ATIS	123.05

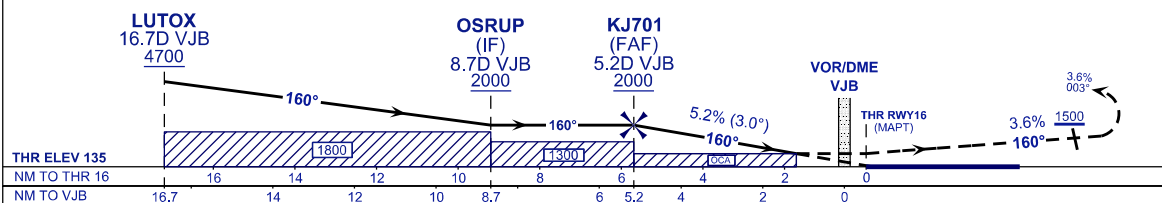
**JOHOR BAHRU/SENAI  
INTERNATIONAL AIRPORT (WMKJ)  
VOR Z RWY 16**



**TRANSITION LEVEL FL 130**  
**TRANSITION ALT 11,000 FT**

**MISSED APPROACH:**  
CLIMB TO 3500FT OR ABOVE ON TR 160°, ON PASSING 1500FT TURN LEFT TR 003° TO INTERCEPT RDL059 OUTBOUND TO IDVED AND HOLD, OR AS DIRECTED BY ATC.

**CAUTION:**  
MISSED APPROACH TURN SPEED MAX 210 KIAS, MIN 3.6% CLIMB GRADIENT TILL PASSING 3500FT, TO CROSS RDL114 VJB 3000FT OR ABOVE.



OCA (OCH)	A	B	C	D
VOR/DME	730 (595)			

DME VJB (NM)	5.2	4.2	3.2	2.2	1.2	0.2
DIST THR RWY16 (NM)	5.7	4.7	3.7	2.7	1.7	0.7
ALTITUDE (FT)	2000	1690	1372	1054	735	417
GROUND SPEED (KT)	80	100	120	140	160	180
FAF - RWY16 (5.7NM) (MIN:SEC)	4:17	3:25	2:51	2:27	2:08	1:54
RATE OF DESCEND (318.5 FT/NM) (FT/MIN)	420	530	640	740	850	960

CHANGES : CATIS TO ATIS IN FREQUENCY BOX,  
TURN SPEED IAS 230KT TO MAX 230KIAS,  
REMOVE OBSTACLE 935FT.