

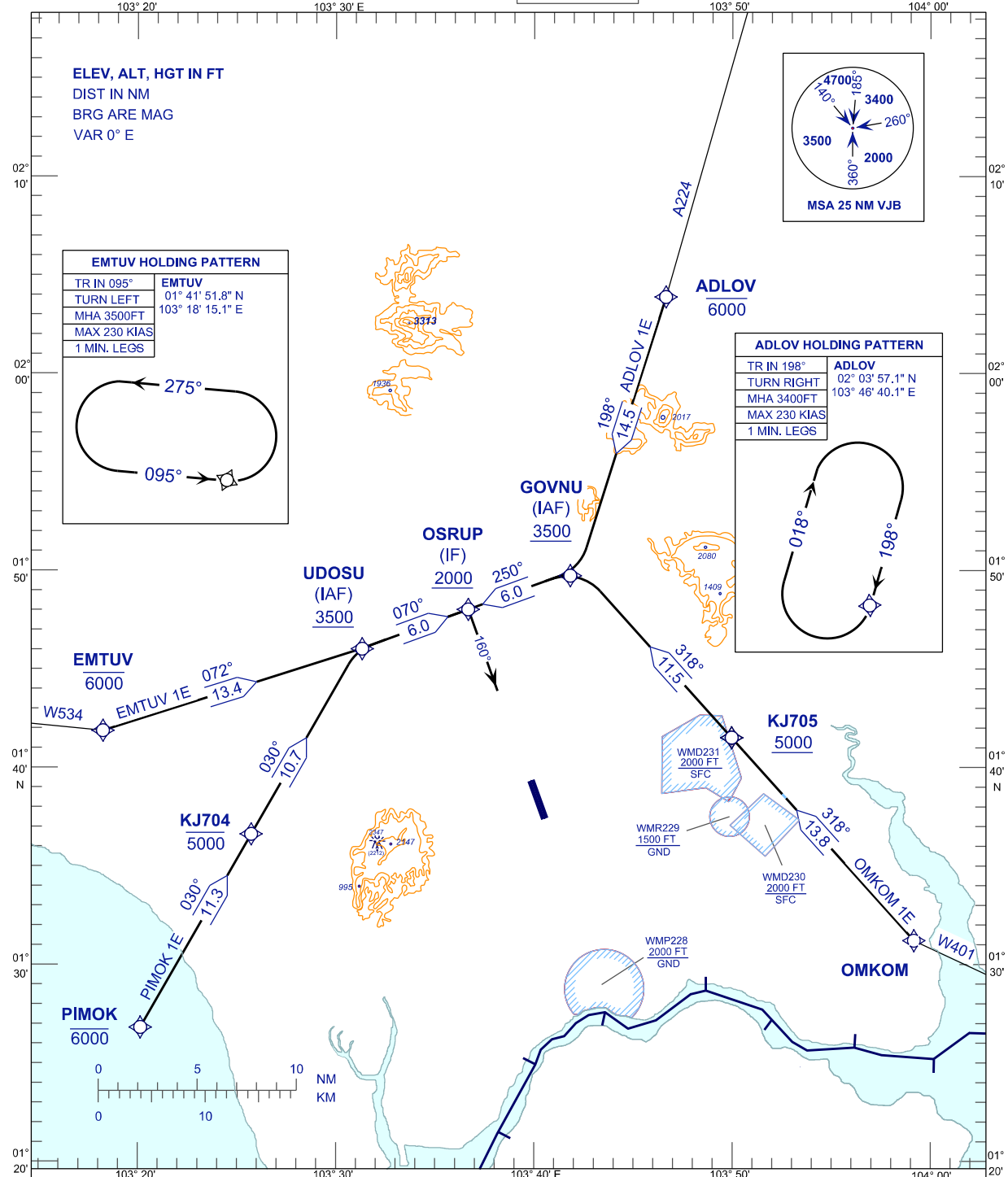
**STANDARD ARRIVAL CHART
INSTRUMENT (STAR) - ICAO**

TRANSITION ALTITUDE
11000FT

APP	124.70 (P)
TWR	118.15
SMC	121.80
ATIS	123.05

**JOHOR BAHRU/SENAI
INTERNATIONAL AIRPORT (WMKJ)
RNAV RWY 16**

EMTUV 1E OMKOM 1E
PIMOK 1E ADLOV 1E



EMTUV HOLDING PATTERN

TR IN 095°	EMTUV
TURN LEFT	01° 41' 51.8" N
MHA 3500FT	103° 18' 15.1" E
MAX 230 KIAS	
1 MIN. LEGS	

275°
095°

ADLOV HOLDING PATTERN

TR IN 198°	ADLOV
TURN RIGHT	02° 03' 57.1" N
MHA 3400FT	103° 46' 40.1" E
MAX 230 KIAS	
1 MIN. LEGS	

018°
198°

COMMUNICATION FAILURE:

- SET TRANSPONDER TO MODE A/C CODE 7600.
- IF UNDER PILOT NAVIGATION, MAINTAIN ASSIGNED LEVEL FOR 3 MINUTES. IF NO ONWARD CLEARANCE IS RECEIVED, SUBSEQUENTLY CLIMB/DESCENT TO COMPLY WITH STAR AND LAND.
- IF UNDER RADAR VECTORED, MAINTAIN VECTOR FOR 1 MINUTES, IF BELOW MSA CLIMB TO MSA, THEN TRACK TO INTERCEPT CLEARED OR PREVIOUSLY ASSIGNED STAR AND LAND.

CHANGES : CATIS TO ATIS IN FREQUENCY BOX,
TURN SPEED IAS 230KT TO MAX 230KIAS.