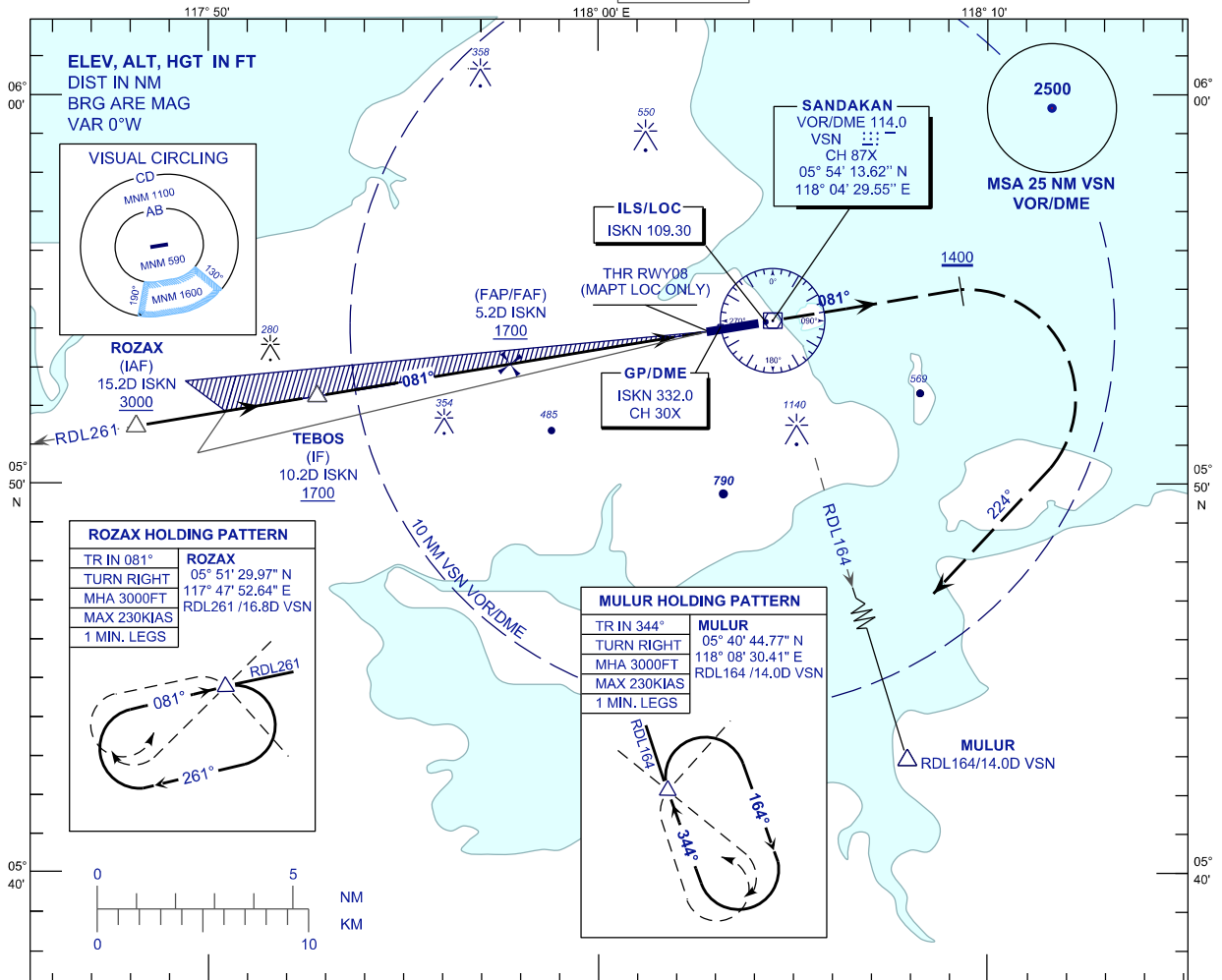


**INSTRUMENT
APPROACH
CHART - ICAO**

AERODROME ELEV 43FT
HEIGHT RELATED TO
THR RWY 08 - ELEV 32FT

APP 123.20
TWR 122.05
SMC 121.90
ATIS 128.20

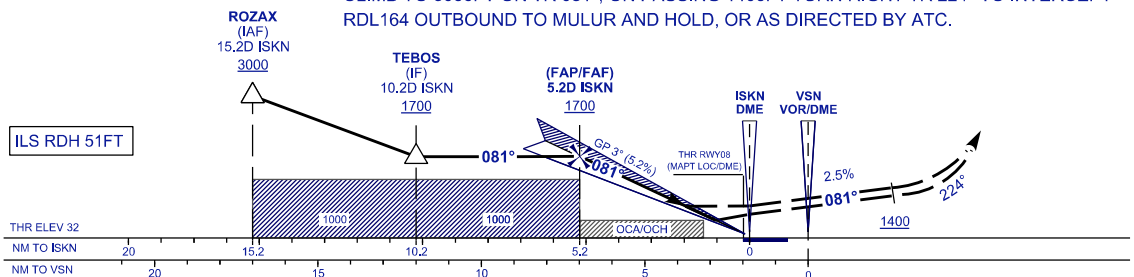
SANDAKAN/SANDAKAN (WBKS)
ILS Z OR LOC Z RWY 08



TRANSITION ALT 11000

MISSED APPROACH

CLIMB TO 3000FT ON TR 081°, ON PASSING 1400FT TURN RIGHT TR 224° TO INTERCEPT RDL164 OUTBOUND TO MULUR AND HOLD, OR AS DIRECTED BY ATC.



OCA(H)	A	B	C	D
ILS/DME(CAT I)	340(308)	340(308)	350(318)	350(318)
LOC/DME	430 (398)			
CIRCLING	590		1600* / 1100	
NOTE*: CIRCLING MNM IN THE SHADED AREA 1600FT				

GROUND SPEED (KT)	80	100	120	140	160
FAF - RWY08 (5.1NM) MIN : SEC	3:49	3:03	2:32	2:11	1:54
RATE OF DESCEND (318 FT/NM) FT/MIN	420	530	640	740	850
DME ISKN (NM)	5.2	4.2	3.2	2.2	1.2
DIST THR RWY08 (NM)	5.1	4.1	3.1	2.1	1.1
ALTITUDE(FT)	1700	1382	1063	745	426

CHANGES : VOR/DME COORDINATES,
BASE TURN SPEED IAS 230KT TO MAX 230KIAS,
IN PROFILE VIEW, AMEND ILS RDH 50FT TO 51 FT.