

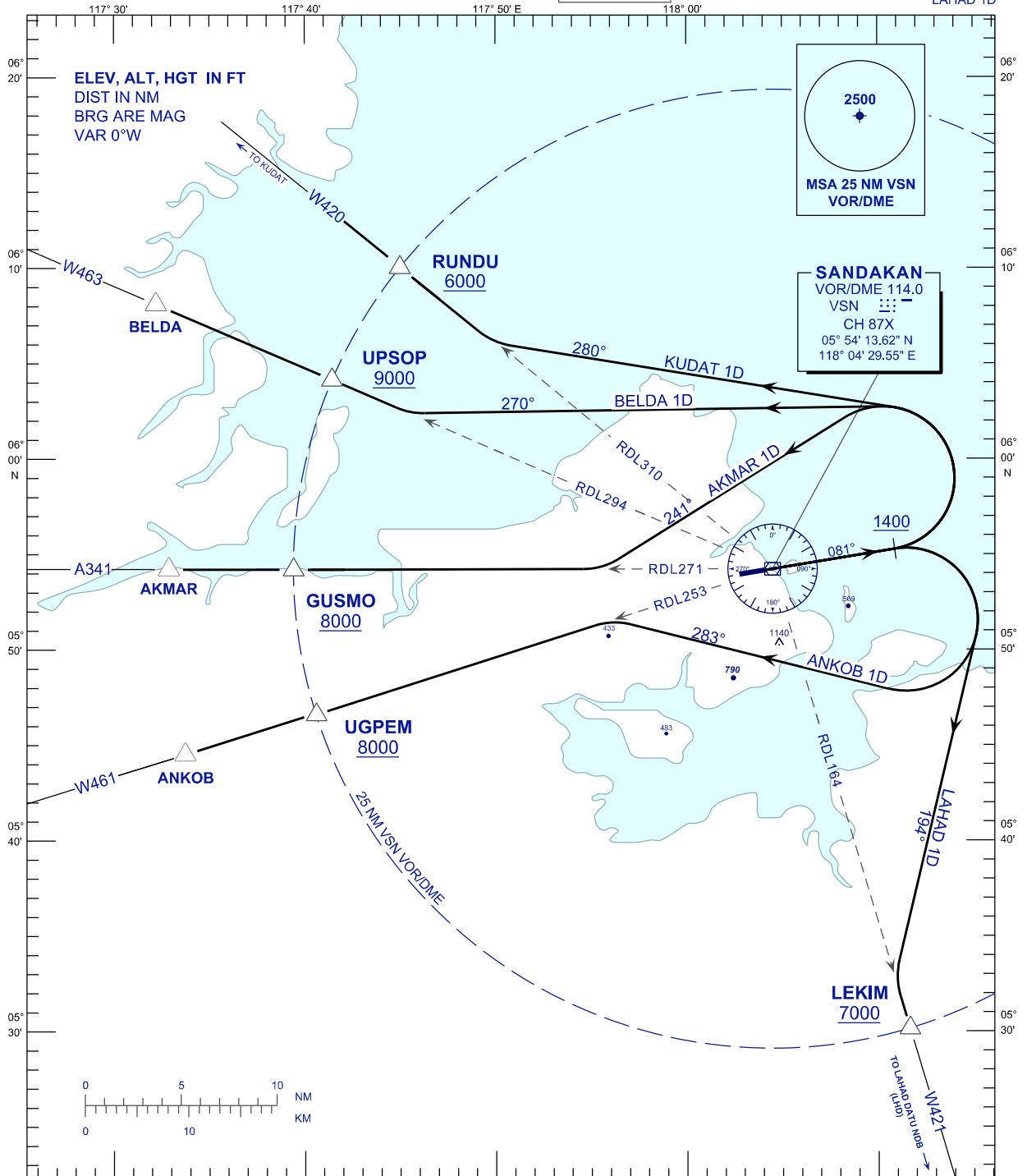
**STANDARD DEPARTURE CHART  
INSTRUMENT (SID) - ICAO**

TRANSITION ALTITUDE  
11000FT

APP 123.20  
TWR 122.05  
SMC 121.90  
ATIS 128.20

**SANDAKAN/SANDAKAN (WBKS)**

**RWY 08**  
KUDAT 1D  
AKMAR 1D  
BELDA 1D  
ANKOB 1D  
LAHAD 1D



**COMMUNICATION FAILURE:**

- SET TRANSPONDER TO MODE A/C CODE 7600.
- IF UNDER PILOT NAVIGATION, MAINTAIN ASSIGNED LEVEL FOR 3 MINUTES. IF NO ONWARD CLEARANCE IS RECEIVED, SUBSEQUENLY CLIMB TO COMPLY WITH SID.
- IF UNDER RADAR VECTORED, MAINTAIN VECTOR FOR 2 MINUTES, IF BELOW MSA CLIMB TO MSA, THEN TRACK TO INTERCEPT CLEARED OR PREVIOUSLY ASSIGNED SID TO DESTINATION.

CHANGES : VOR/DME COORDINATES.