

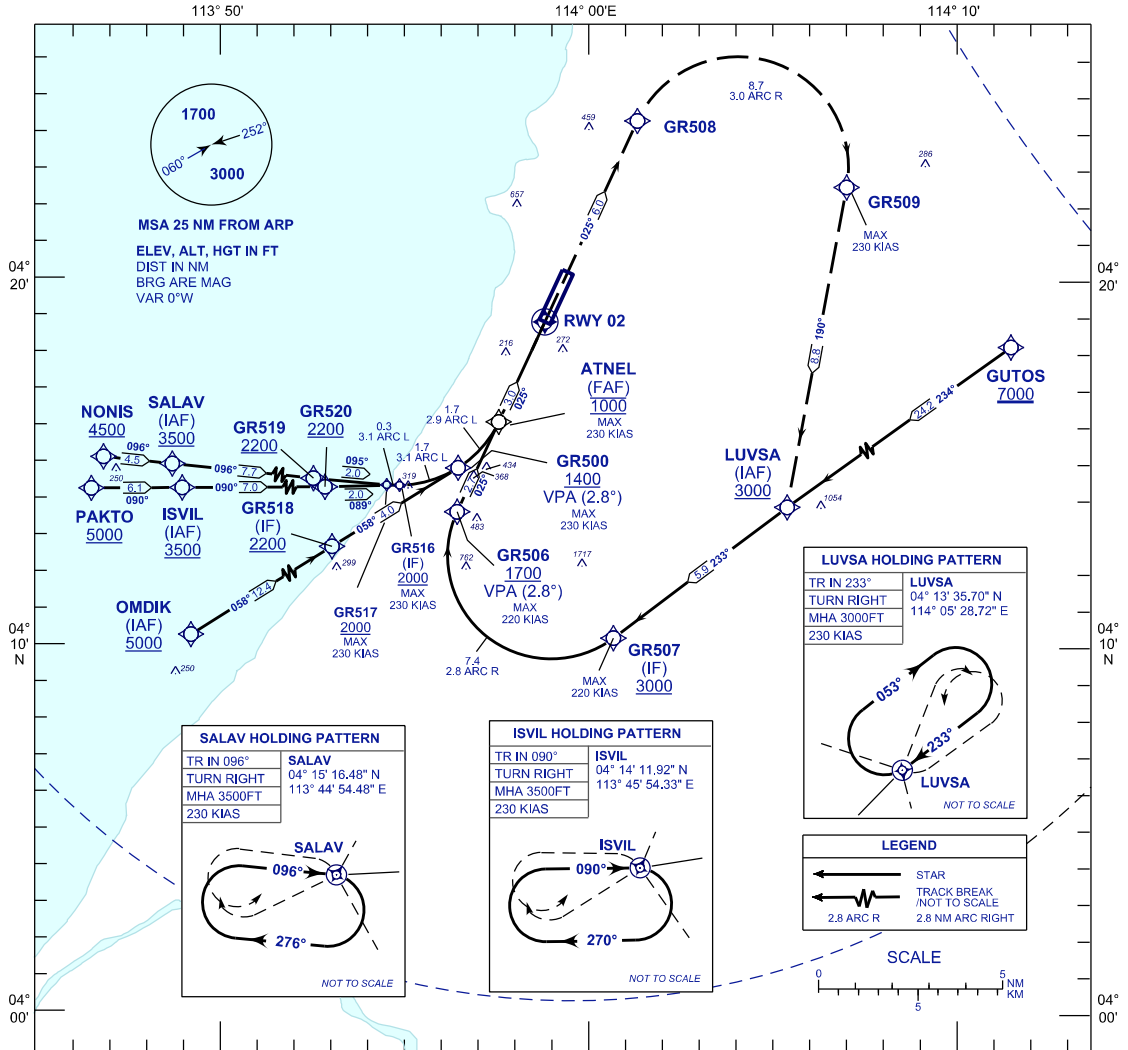
**INSTRUMENT
APPROACH
CHART - ICAO**

AERODROME ELEV 59 FT
HEIGHT RELATED TO
THR RWY 02 - ELEV 59 FT

APP	129.9 (P)
	122.70 (S)
TWR	123.30
SMC	121.9
CATIS	127.0

MIRI/MIRI (WBGR)

RNP Z RWY 02 (AR)



VPA 2.8°
RDH 52FT

MISSED APPROACH
CLIMB TO 3000FT VIA THE RNP MISSED APPROACH
TRACK TO LUVSA OR AS DIRECTED BY ATC

ATNEL (FAF) 1000

TRANSITION LEVEL FL130
TRANSITION ALT 11 000

THR ELEV 59
NM TO THR 02

RWY02

2.8° (4.9%)
025°

STRAIGHT - IN APPROACH	OCA (OCH)	GROUND SPEED - KT	70	90	100	120	140	160
CATEGORY OF AIRCRAFT	C D	RATE OF DESCENT (2.8°) (FEET/MIN)	347	446	495	594	693	792
RNP 0.3	485 (426)	DISTANCE TO THRESHOLD (NM)	3	2	1			
CIRCLING AND ALTERNATE N/A		ALTITUDE (FEET)	1000	670	370			

- 1. AUTHORIZATION REQUIRED
- 2. GNSS REQUIRED
- 3. RF REQUIRED
- 4. APPROACH NOT AUTHORIZED WHEN AIRPORT TEMPERATURE BELOW 19°C OR ABOVE 38°C.
- 5. WBGR ALTIMETER SETTING REQUIRED.
- 6. PAPI AND VERTICAL PATH ANGLE NOT COINCIDENT.
- 7. RNP 0.3 REQUIRED FROM IAF'S TO FAF.

CHANGES : CHART IDENTIFICATION