

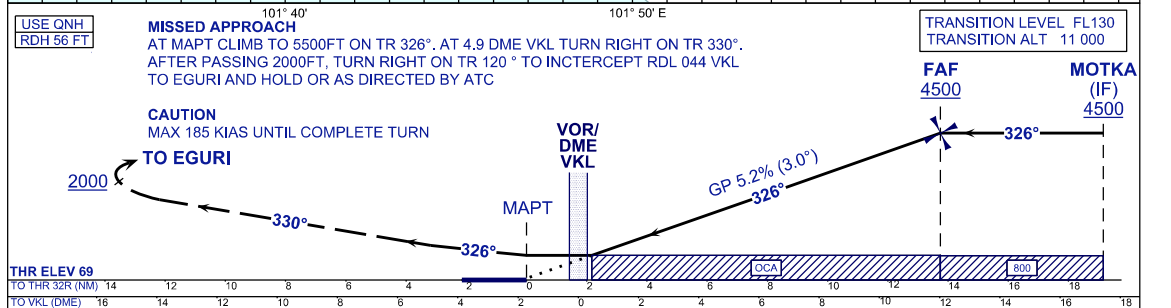
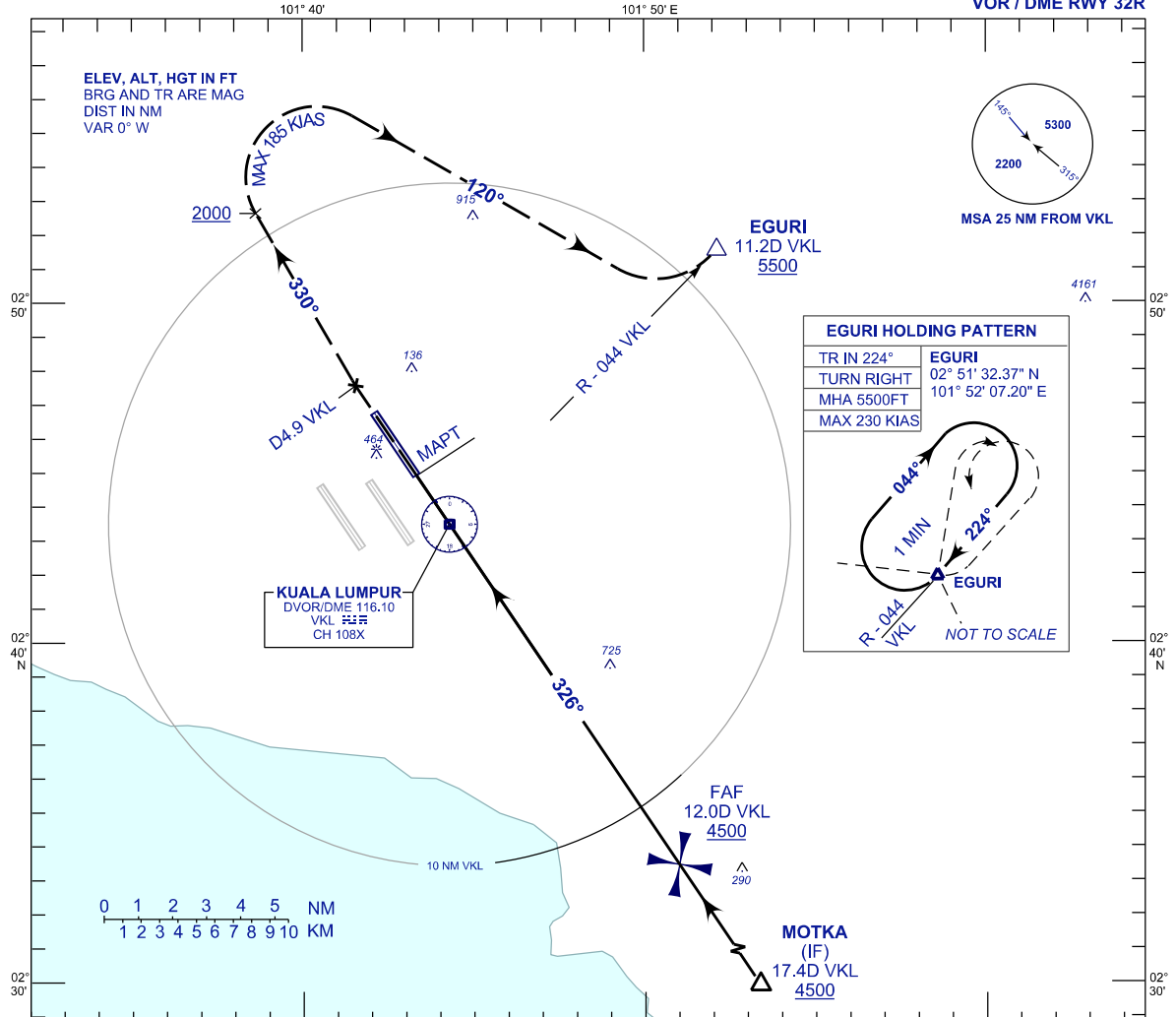
**INSTRUMENT  
APPROACH  
CHART - ICAO**

**AERODROME ELEV 69 FT**  
HEIGHT RELATED TO  
THR RWY 32R - ELEV 69 FT

APP	TWR	SMC	ATIS
121.25 120.35 135.75	118.80	121.65	128.05

**SEPANG/KL INTERNATIONAL  
AIRPORT (WMKK)**

**VOR / DME RWY 32R**



OCA (OCH)	A	B	C	D
VOR / DME	810 (741)			

GROUND SPEED (GS)	KT	80	100	120	140	160	180
FAF - RWY32R (13.7 NM)	MIN:SEC	10:19	8:15	6:52	5:54	5:09	4:35
RATE OF DESCEND (318.4 FT/NM)	FT/MIN	420	530	640	740	850	950

DME VKL	NM	12.0	11.0	10.0	9.0	8.0	7.0	6.0	5.0	4.0	3.0	2.0	1.0	0.0	1.0
DIST THR/RWY32R	NM	13.7	12.7	11.7	10.7	9.7	8.7	7.7	6.7	5.7	4.7	3.7	2.7	1.7	0.7
ALTITUDE	FT	4500	4166	3848	3530	3212	2894	2575	2257	1939	1621	1303	985	667	349

CHANGES : NEW CHART.