

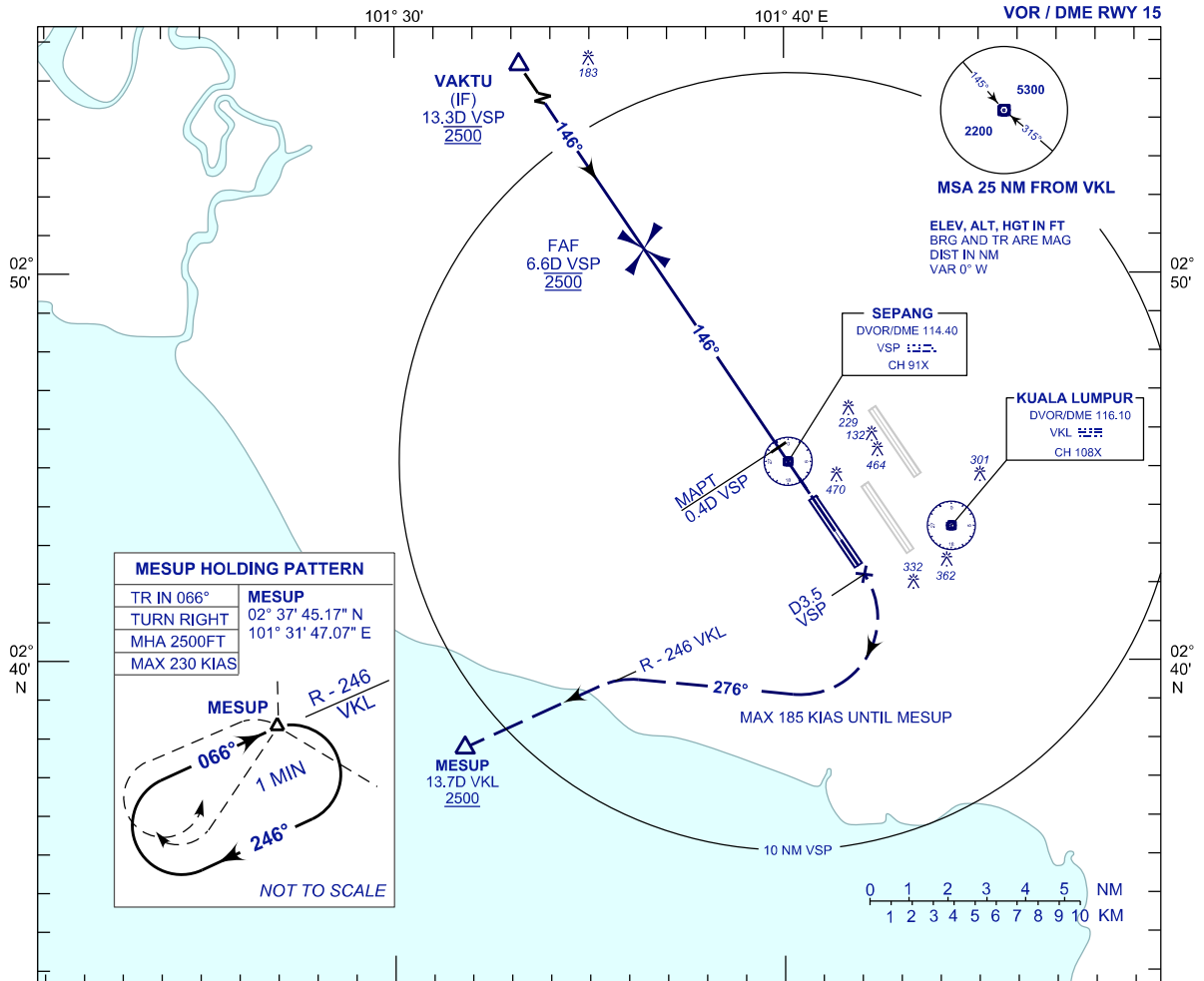
**INSTRUMENT
APPROACH
CHART - ICAO**

AERODROME ELEV 69 FT
HEIGHT RELATED TO
THR RWY 15 - ELEV 28 FT

APP 124.20 119.45 125.10	TWR 119.80	SMC 118.05	ATIS 128.05
-----------------------------------	---------------	---------------	----------------

**SEPANG/KL INTERNATIONAL
AIRPORT (WMKK)**

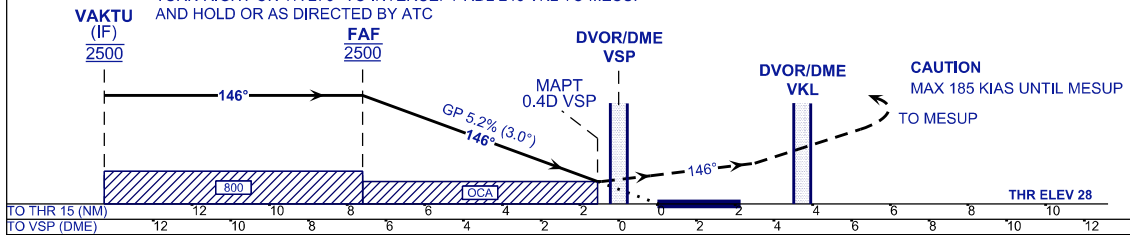
VOR / DME RWY 15



USE QNH
RDH 52 FT

MISSED APPROACH
AT MAPT, CLIMB 2500FT ON TR 146°, PASSING 3.5 DME VSP
TURN RIGHT ON TR 276° TO INTERCEPT RDL 246 VKL TO MESUP
AND HOLD OR AS DIRECTED BY ATC

TRANSITION LEVEL FL130
TRANSITION ALT 11 000



OCA (OCH)	A	B	C	D
VOR/DME	570/542			

GROUND SPEED (GS)	KT	80	100	120	140	160	180
FAF - RWY15 (7.6 NM)	MIN:SEC	4:38	3:42	3:05	2:39	2:19	2:03
RATE OF DESCEND (318.4 FT/NM)	FT/MIN	420	530	640	740	850	950

DIST VSP DME	NM	6.6	5.6	4.6	3.6	2.6	1.6	0.6	0.4
DIST THR/RWY15	NM	7.6	6.6	5.6	4.6	3.6	2.6	1.6	0.6
ALTITUDE	FT	2500	2181	1862	1544	1226	908	590	271

CHANGES : NEW CHART.