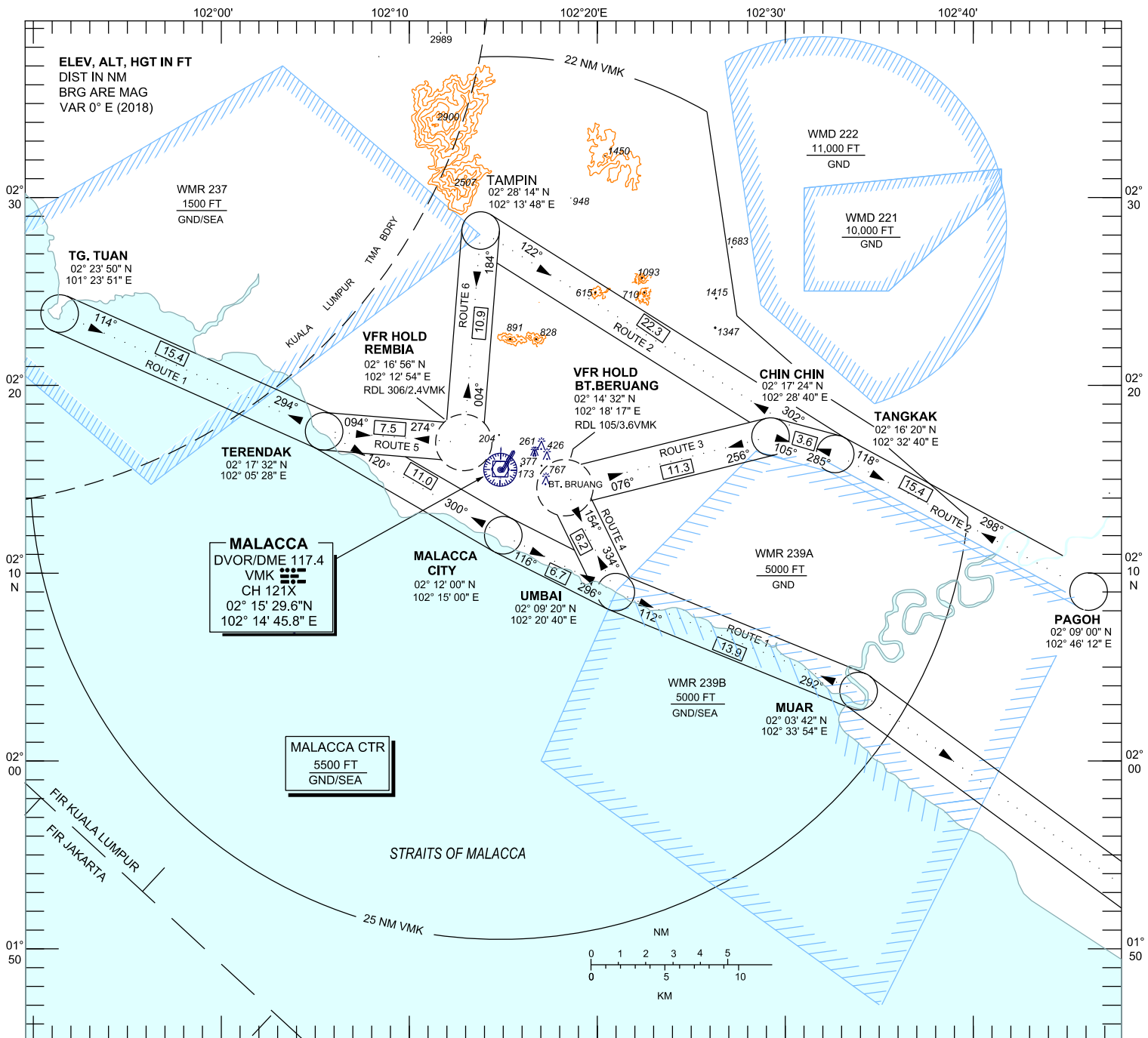


**VISUAL
CHART - ICAO**

AERODROME ELEV 40 FT
HEIGHTS RELATED TO
AD ELEV

TWR 118.00
GND 121.60
ATIS 127.45

**MALACCA / MALACCA(WMKM)
VFR ROUTES**



ROUTE 1 : FROM TG. TUAN ALT NOT ABOVE 2000 FT - TERENDAK - MALACCA CITY - UMBAI - MUAR

(ACFT TO FLY NOT BELOW 1000 FT AND REMAIN CLEAR OF PETRONAS REFINERY & TERENDAK ARMY CAMP)

ROUTE 2 : FROM TAMPIN-ALT NOT ABOVE 2000 FT EAST OF NORTH-SOUTH EXPRESSWAY-TANGKAK - PAGOH

ROUTE 3 : FROM TANGKAK ALT NOT ABOVE 2000 FT - CHIN CHIN - BT. BERUANG VFR HOLD

ROUTE 4 : FROM UMBAI ALT NOT ABOVE 2000 FT - BT. BERUANG VFR HOLD

ROUTE 5 : FROM TERENDAK ALT NOT ABOVE 2000 FT - REMBIA VFR HOLD

(ACFT TO FLY NOT BELOW 1000 FT AND REMAIN CLEAR OF TERENDAK ARMY CAMP)

ROUTE 6 : FROM TAMPIN ALT NOT ABOVE 2000 FT - REMBIA VFR HOLD

NOTE 1: BT. BERUANG HOLD AN AREA EAST OF WATER CITY RESORT (02°14'32.40"N 102°18'16.72"E)

NOTE 2: REMBIA HOLD IS AN AREA OVERHEAD SOLAR ENERGY FACTORY (02°20'32.00"N 102°12'50.00"E)

NOTE 3: WIDTH OF VFR ROUTE = 2 NM

CHANGES : VFR HOLD BERTAM TO REMBIA