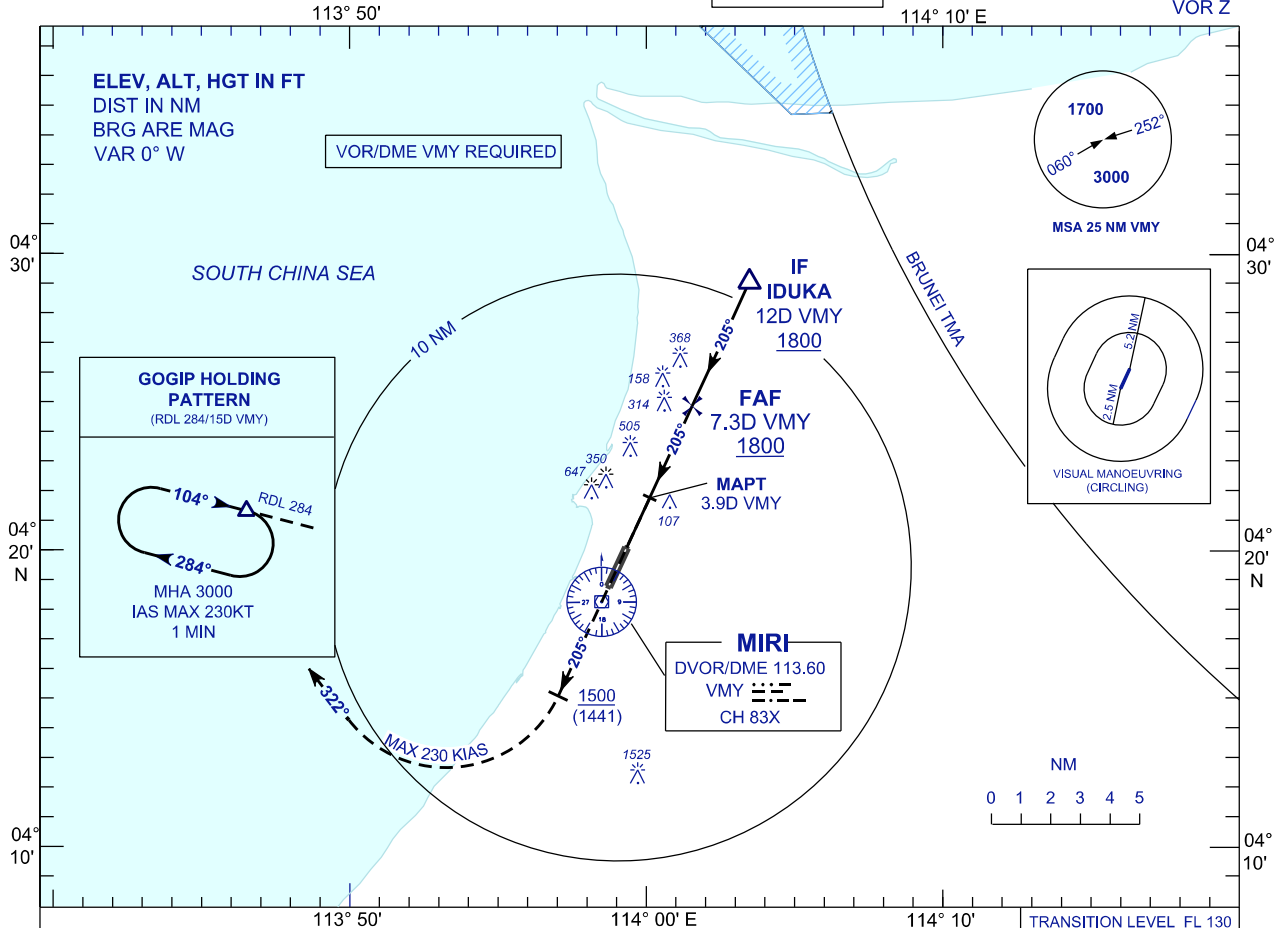


**INSTRUMENT
APPROACH
CHART - ICAO**

AERODROME ELEV 59 FT
HEIGHTS RELATED TO
THR RWY 20 - ELEV 59 FT

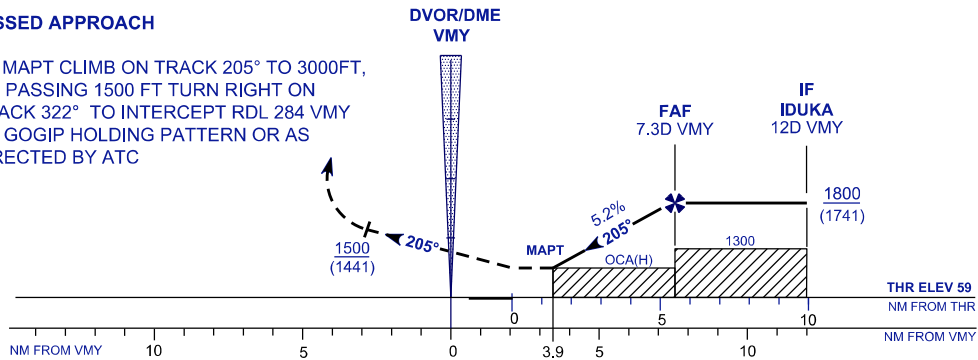
APP 129.9(P)
122.7(S)
TWR 123.3
SMC 121.9
CATIS 127.0

**MIRI/MIRI (WBGR)
RWY 20**



MISSED APPROACH

AT MAPT CLIMB ON TRACK 205° TO 3000FT,
ON PASSING 1500 FT TURN RIGHT ON
TRACK 322° TO INTERCEPT RDL 284 VMY
TO GOGIP HOLDING PATTERN OR AS
DIRECTED BY ATC



OCA (H) FT				
ACFT CATEGORY	A	B	C	D
VOR/DME (STRAIGHT-IN)	650 (591) / 3.9 VMY			
CIRCLING	950 (891)		1800 (1741)	
DME DISTANCE (VMY)	7.3	6	5	4
ALTITUDE (FT)	1800 (1741)	1372 (1313)	1053 (994)	735 (676)

CHANGES : OBSTACLE HEIGHT