

**STANDARD ARRIVAL CHART
INSTRUMENT (STAR) - ICAO**

TRANSITION ALTITUDE
11 000 FT

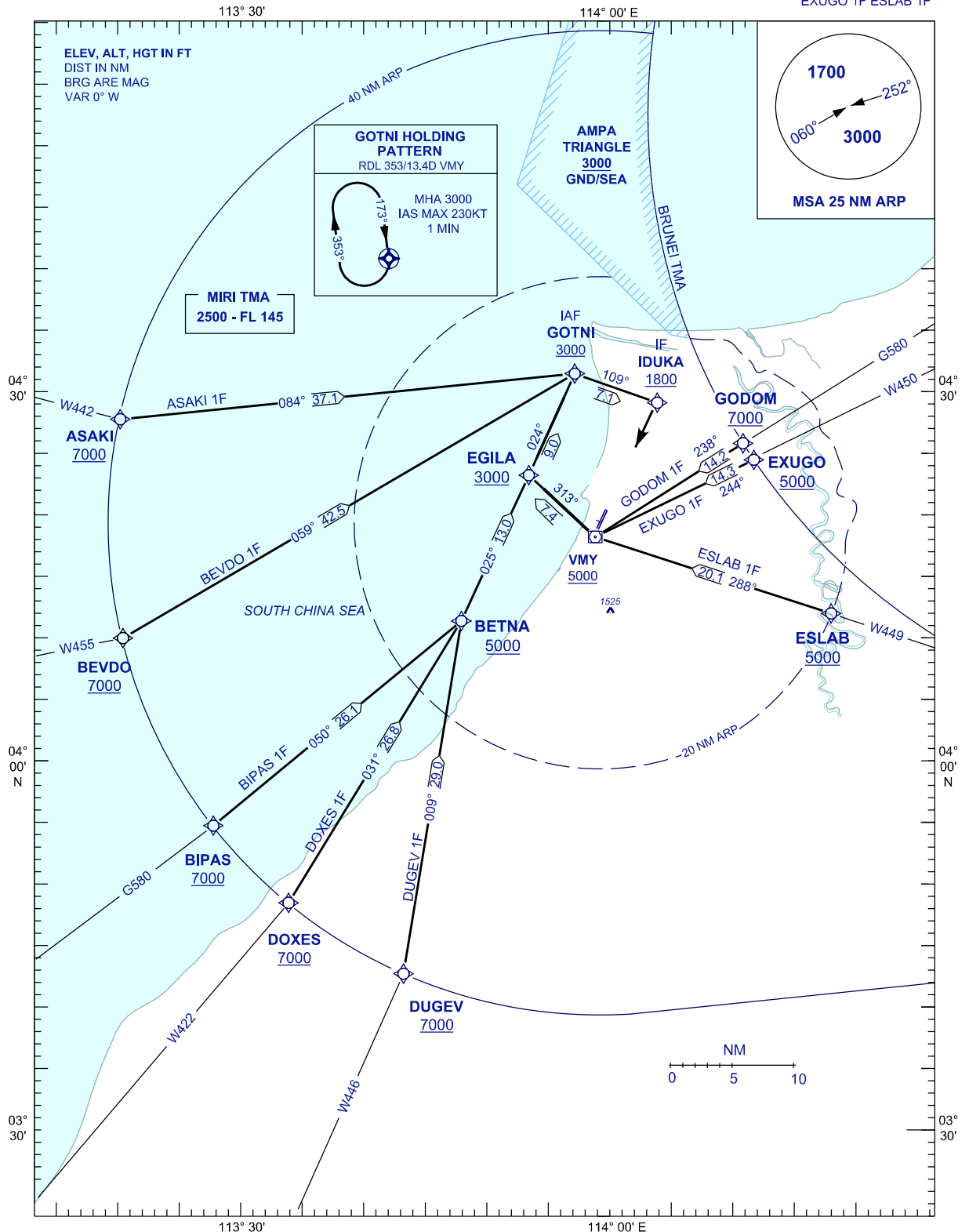
APP	129.9(P)
TWR	123.3
SMC	121.9
CATIS	127.0

MIRI/MIRI (WBGR)

RWY 20

RNAV (GNSS)

ASAKI 1F BEVDO 1F BIPAS 1F
DOXES 1F DUGEV 1F GODOM 1F
EXUGO 1F ESLAB 1F



CHANGES : OBSTACLE HEIGHT