

**STANDARD ARRIVAL CHART  
INSTRUMENT (STAR) - ICAO**

TRANSITION ALTITUDE  
11 000 FT

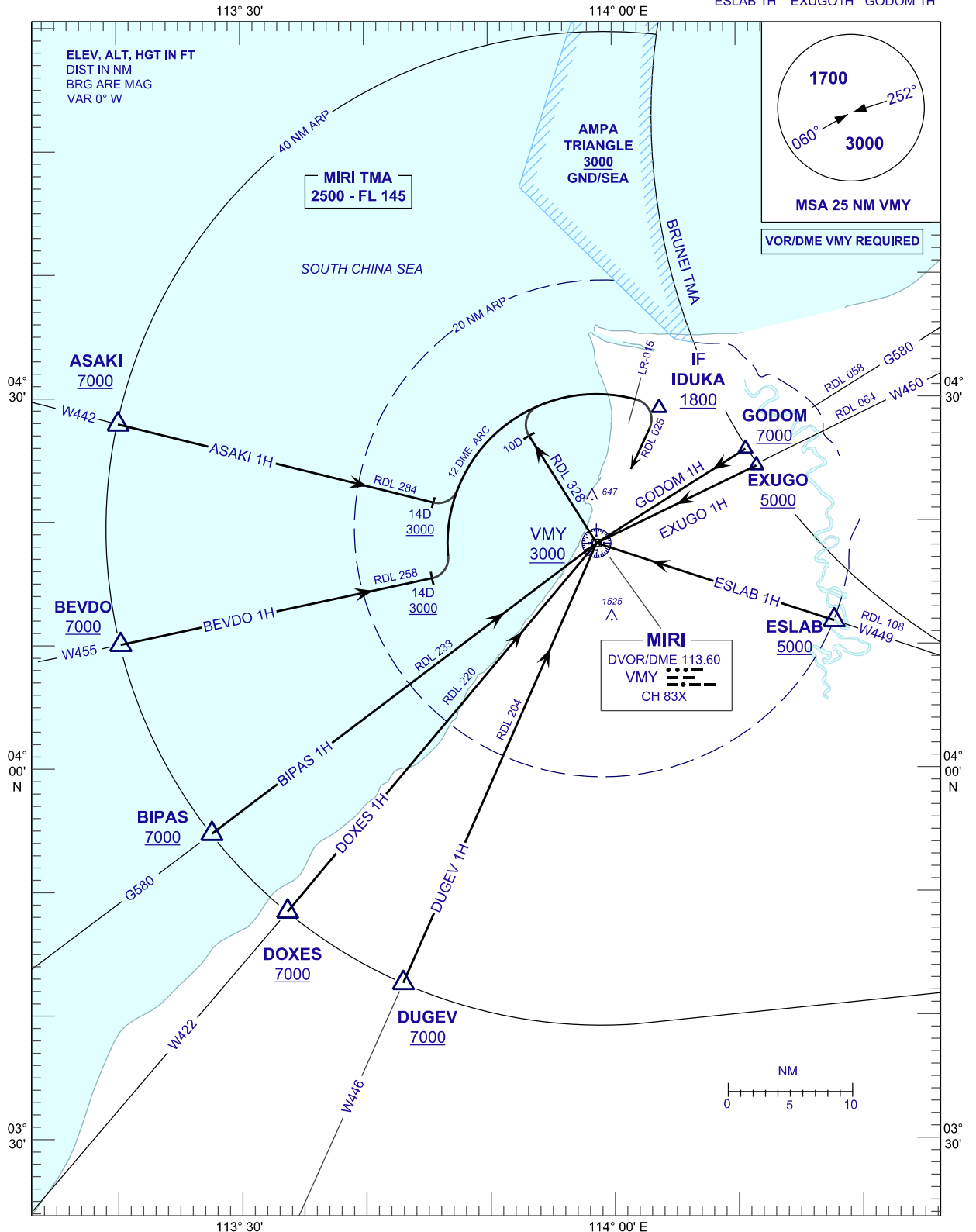
APP 129.9(P)  
122.7(S)  
TWR 123.3  
SMC 121.9  
CATIS 127.0

**MIRI/MIRI (WBGR)**

**RWY 20**

ARRIVAL (12 DME ARC)

ASAHI 1H BEVDO 1H  
BIPAS 1H DOXES 1H DUGEV 1H  
ESLAB 1H EXUGO 1H GODOM 1H



CHANGES : OBSTACLE HEIGHT