

**STANDARD DEPARTURE CHART  
INSTRUMENT (SID) - ICAO**

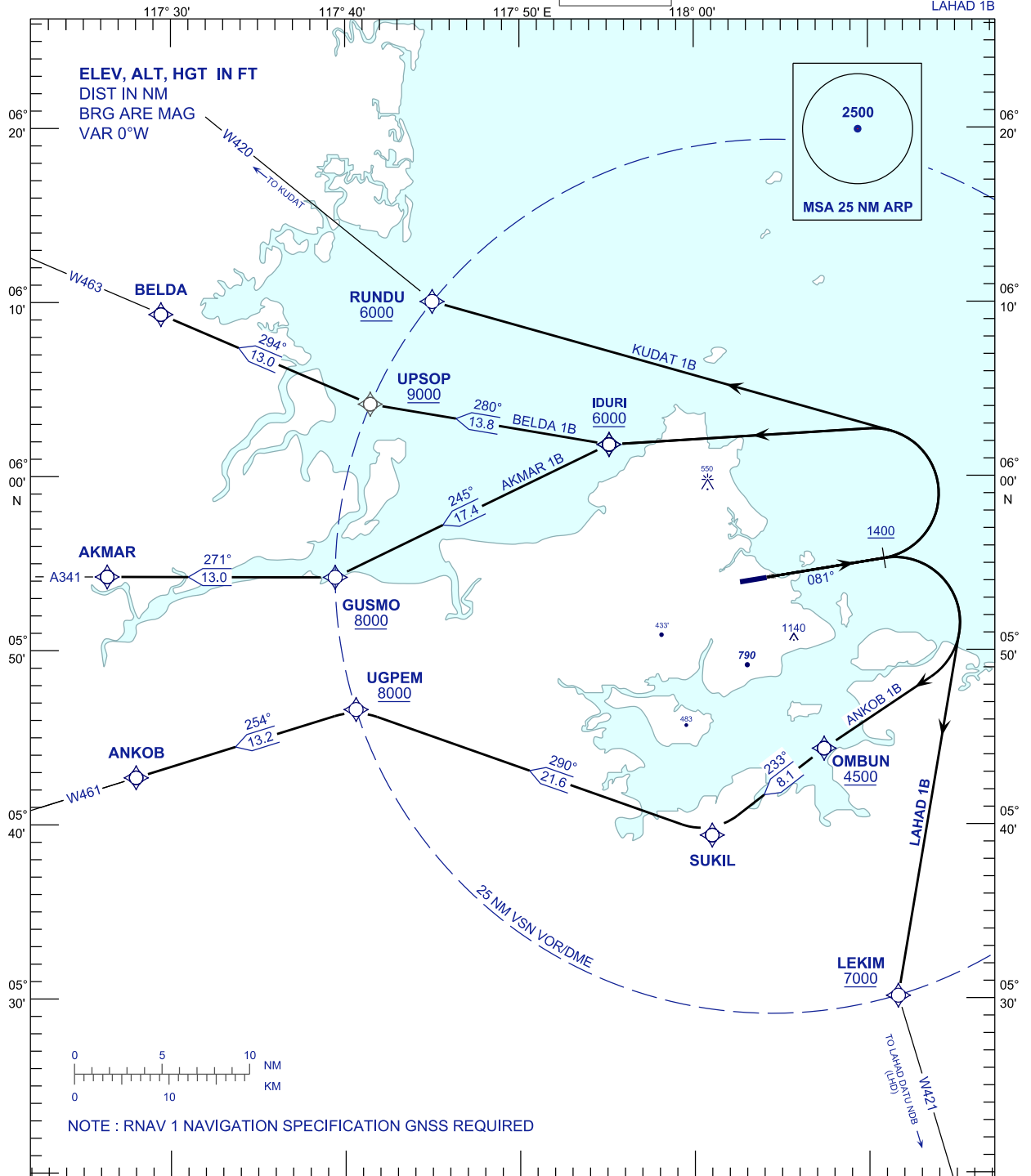
TRANSITION ALTITUDE  
11000FT

APP 123.20  
TWR 122.05  
SMC 121.90  
ATIS 128.20

**SANDAKAN/SANDAKAN (WBKS)**

**RNAV RWY 08**

KUDAT 1B BELDA 1B  
AKMAR 1B ANKOB 1B  
LAHAD 1B



NOTE : RNAV 1 NAVIGATION SPECIFICATION GNSS REQUIRED

**COMMUNICATION FAILURE:**

- SET TRANSPONDER TO MODE A/C CODE 7600.
- IF UNDER PILOT NAVIGATION, MAINTAIN ASSIGNED LEVEL FOR 3 MINUTES. IF NO ONWARD CLEARANCE IS RECEIVED, SUBSEQUENLY CLIMB TO COMPLY WITH SID.
- IF UNDER RADAR VECTORED, MAINTAIN VECTOR FOR 2 MINUTES, IF BELOW MSA CLIMB TO MSA, THEN TRACK TO INTERCEPT CLEARED OR PREVIOUSLY ASSIGNED SID TO DESTINATION.