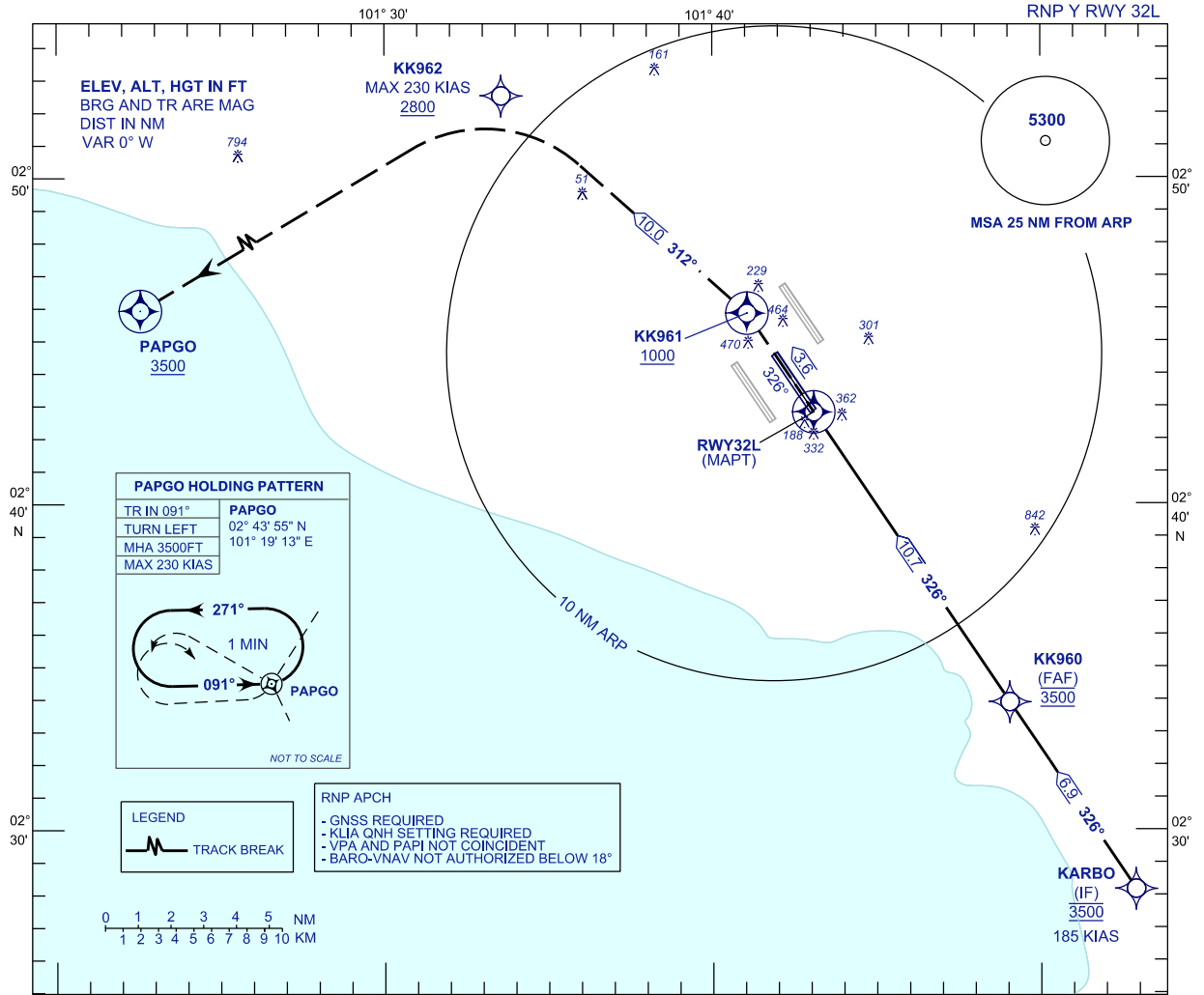


**INSTRUMENT  
APPROACH  
CHART - ICAO**

**AERODROME ELEV 69 FT**  
HEIGHT RELATED TO  
THR RWY 32L - ELEV 48 FT

APP	TWR	SMC	ATIS
124.65	118.50	121.80	128.05
118.65		122.525	
135.75			

**SEPANG/KL INTERNATIONAL  
AIRPORT (WMKK)**

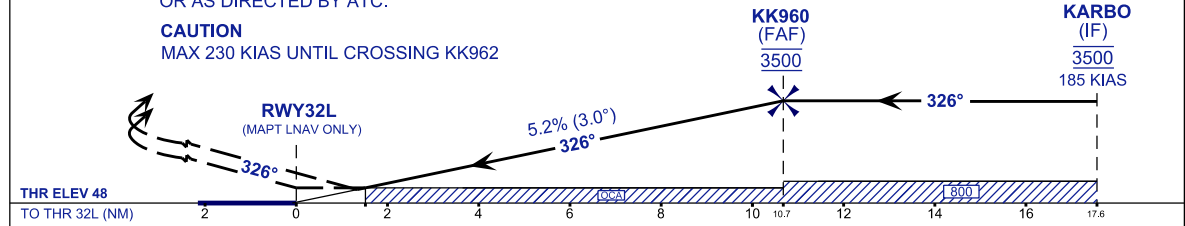


VPA 3.0°  
TCH 52 FT

**MISSED APPROACH**  
AT MAPT, TR326 TO KK961 CLIMB TO 3500FT.  
THEN TR312 TO KK962 THEN TURN LEFT TO PAPGO AND HOLD  
OR AS DIRECTED BY ATC.

TRANSITION LEVEL FL130  
TRANSITION ALT 11 000

**CAUTION**  
MAX 230 KIAS UNTIL CROSSING KK962



STRAIGHT-IN APPROACH	OCA (OCH)				GROUND SPEED (GS)				KNOTS	80	100	120	140	160	180		
CATEGORY OF AIRCRAFT	A	B	C	D	FAF - RWY32L (10.7 NM)				MIN:SEC	8:01	6:25	5:21	4:35	4:01	3:34		
LNAV / VNAV	530 (482)				RATE OF DESCENT (318.5 FT/NM)				FT/MIN	420	530	630	740	840	950		
LNAV	580 (532)				DIST THR / RWY32L				NM	10.7	9.7	8.7	7.7	6.7	5.7	4.7	3.7
					ALTITUDE				FT	3500	3183	2864	2546	2228	1909	1591	1272
					DIST THR / RWY32L				NM	2.7	1.7	0.7					
					ALTITUDE				FT	954	635	317					

CHANGES : RENAMING CHART IDENTIFICATION