

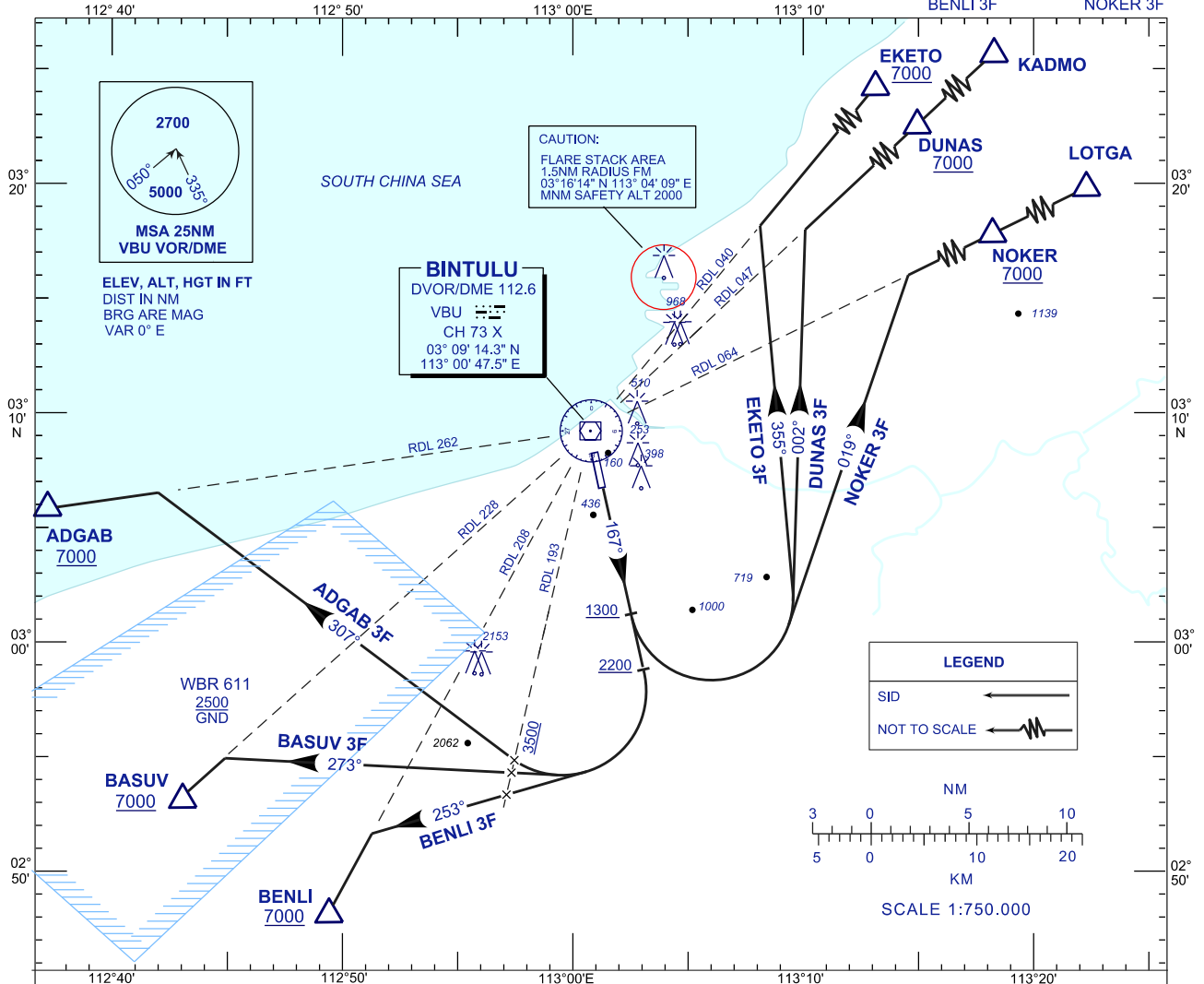
**STANDARD DEPARTURE CHART  
INSTRUMENT (SID) - ICAO**

TRANSITION ALTITUDE  
11,000 FT

TWR/APP 122.3 (P)  
119.25 (S)  
SMC 121.5  
ATIS 121.8  
127.8

**BINTULU/BINTULU (WBGB)  
DEPARTURES RWY 17**

ADGAB 3F EKETO 3F  
BASUV 3F DUNAS 3F  
BENLI 3F NOKER 3F



CLIMB GRADIENT		GROUND SPEED (KT)				
		150	180	210	240	270
4%	FT/NM	608	729	851	972	1094

**COMMUNICATION FAILURE :**

SQUAWK 7600

- IF UNDER PILOT NAVIGATION, MAINTAIN LAST ASSIGNED LEVEL FOR 3 MINUTES, IF NO ONWARD CLEARANCE IS RECEIVED. SUBSEQUENTLY CLIMB TO COMPLY WITH SID.
- IF UNDER RADAR VECTORING : MAINTAIN VECTOR FOR 2 MINUTES, IF BELOW MSA, CLIMB TO MSA, THEN TRACK TO INTERCEPT CLEARED OR PREVIOUSLY ASSIGNED SID TO DESTINATION.