

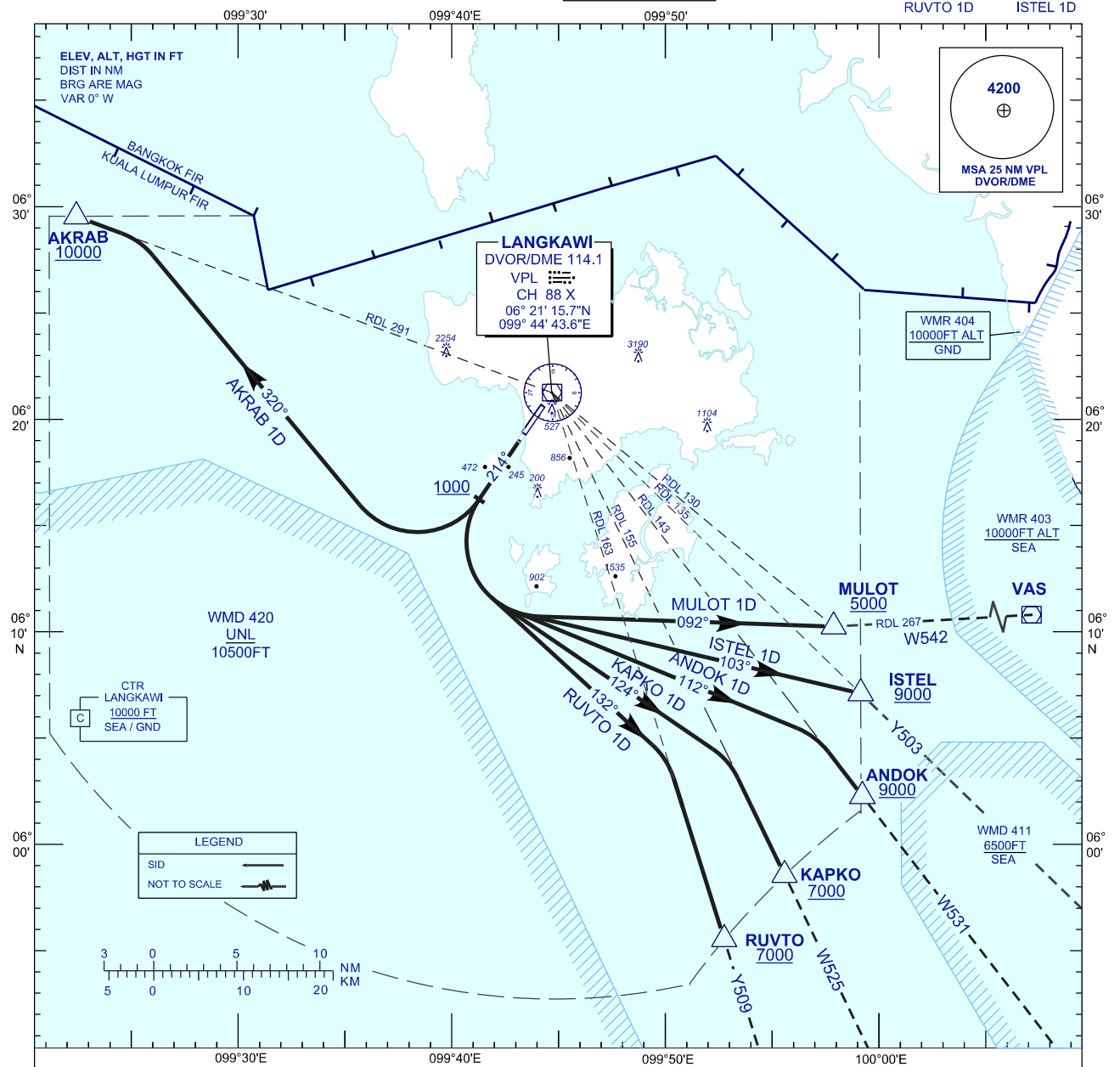
**STANDARD DEPARTURE CHART
INSTRUMENT (SID) - ICAO**

TRANSITION ALTITUDE
11000 FT

APP 119.4, 257.8
TWR 118.5
SMC 121.8
ATIS 128.2

**LANGKAWI/LANGKAWI
INTERNATIONAL AIRPORT (WMKL)
RWY 21**

KAPKO 1D AKRAB 1D
ANDOK 1D MULOT 1D
RUVTO 1D ISTELE 1D



COMMUNICATION FAILURE :

- SQUAWK 7600
- IF UNDER PILOT NAVIGATION, MAINTAIN LAST ASSIGNED LEVEL FOR 3 MINUTES, IF NO ONWARD CLEARANCE IS RECEIVED. SUBSEQUENTLY CLIMB TO COMPLY WITH SID.
 - IF UNDER RADAR VECTORED : MAINTAIN VECTOR FOR 2 MINUTES, IF BELOW MSA, CLIMB TO MSA, THEN TRACK TO INTERCEPT CLEARED OR PREVIOUSLY ASSIGNED SID TO DESTINATION.

CHANGES : CHANGE COORDINATE FOR DVOR, RDL FROM VPL FOR ISTELE, RUVTO & AKRAB, RDL FROM VAS FOR MULOT, MAGNETIC VARIATION VALUE ADD TRACK 214°