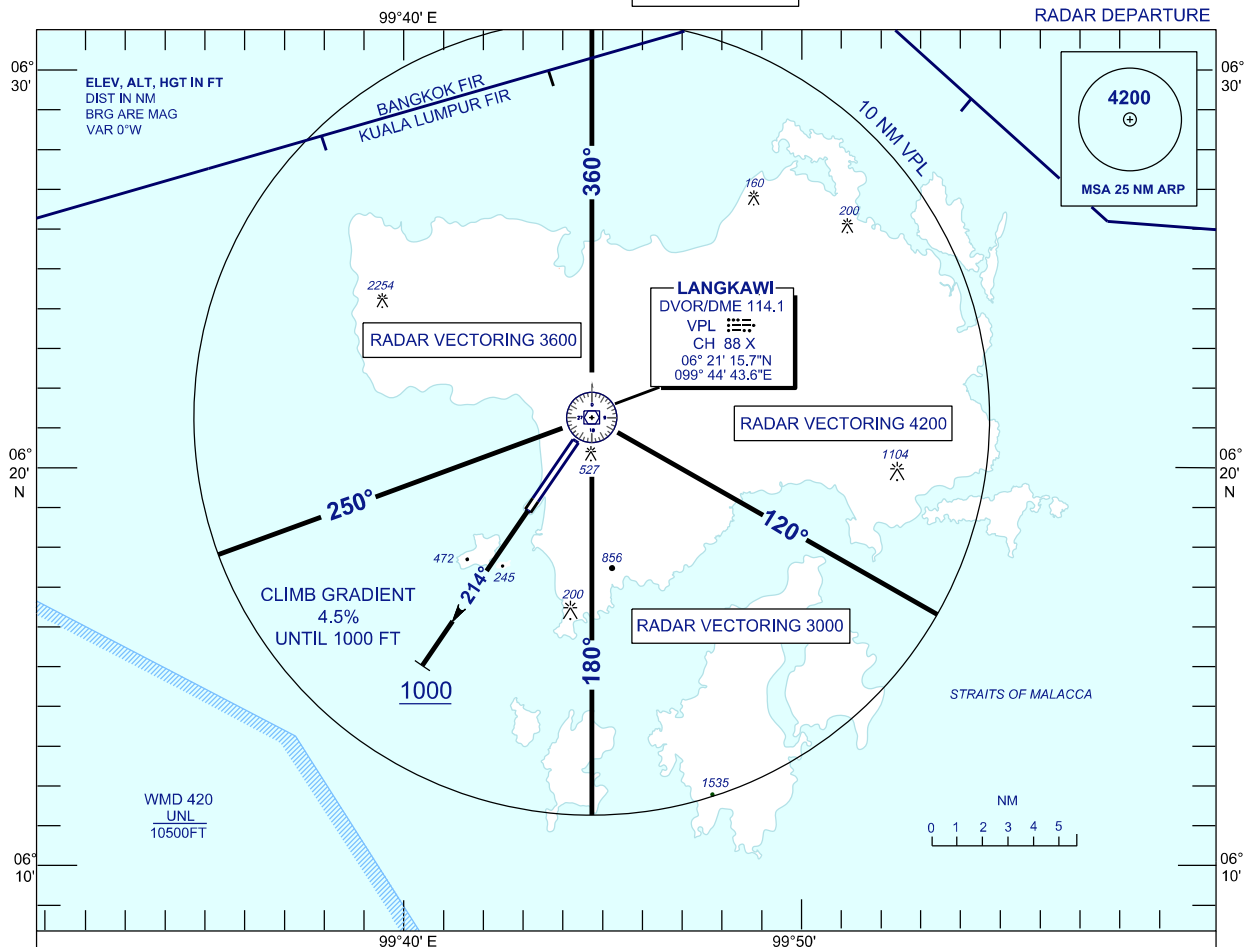


**STANDARD DEPARTURE CHART  
INSTRUMENT (SID) - ICAO**

TRANSITION ALTITUDE  
11000 FT

APP 119.4, 257.8  
TWR 118.5  
SMC 121.8  
ATIS 128.2

**LANGKAWI/LANGKAWI  
INTERNATIONAL AIRPORT (WMKL)**



**STANDARD RADAR DEPARTURE  
LANGKAWI RADAR DEPARTURE**

**RWY 21**

CLIMB GRADIENT 4.5% UNTIL 1000 FT.  
AFTER TAKE - OFF PROCEED ON TRACK 214° UNTIL PASSING 1000 FT, THEN  
FOLLOW THE ASSIGNED HEADING. CONTACT LANGKAWI APPROACH WHEN  
AIRBORNE.

	RATE OF CLIMB (FT/MIN)										
GROUND SPEED (KT)	130	140	150	160	170	180	200	220	240	260	280
GRADIENT 3.3%	434	468	501	535	568	602	668	735	802	869	936
GRADIENT 4.5%	592	638	684	730	775	820	910	1002	1094	1185	1276

**COMMUNICATION FAILURE:**

- \* SQUAWK 7600
- \* MAINTAIN ASSIGNED HEADING - CLIMB TO MSA OR AT LEAST LAST ASSIGNED LEVEL (IF HIGHER)
- \* MAINTAIN MSA OR ASSIGNED LEVEL AS APPROPRIATE FOR 2 MINUTES, THEN CLIMB TO FLIGHT PLAN LEVEL AND INTERCEPT FLIGHT PLAN TRACK (AS AMENDED BY ATC IF APPLICABLE)