

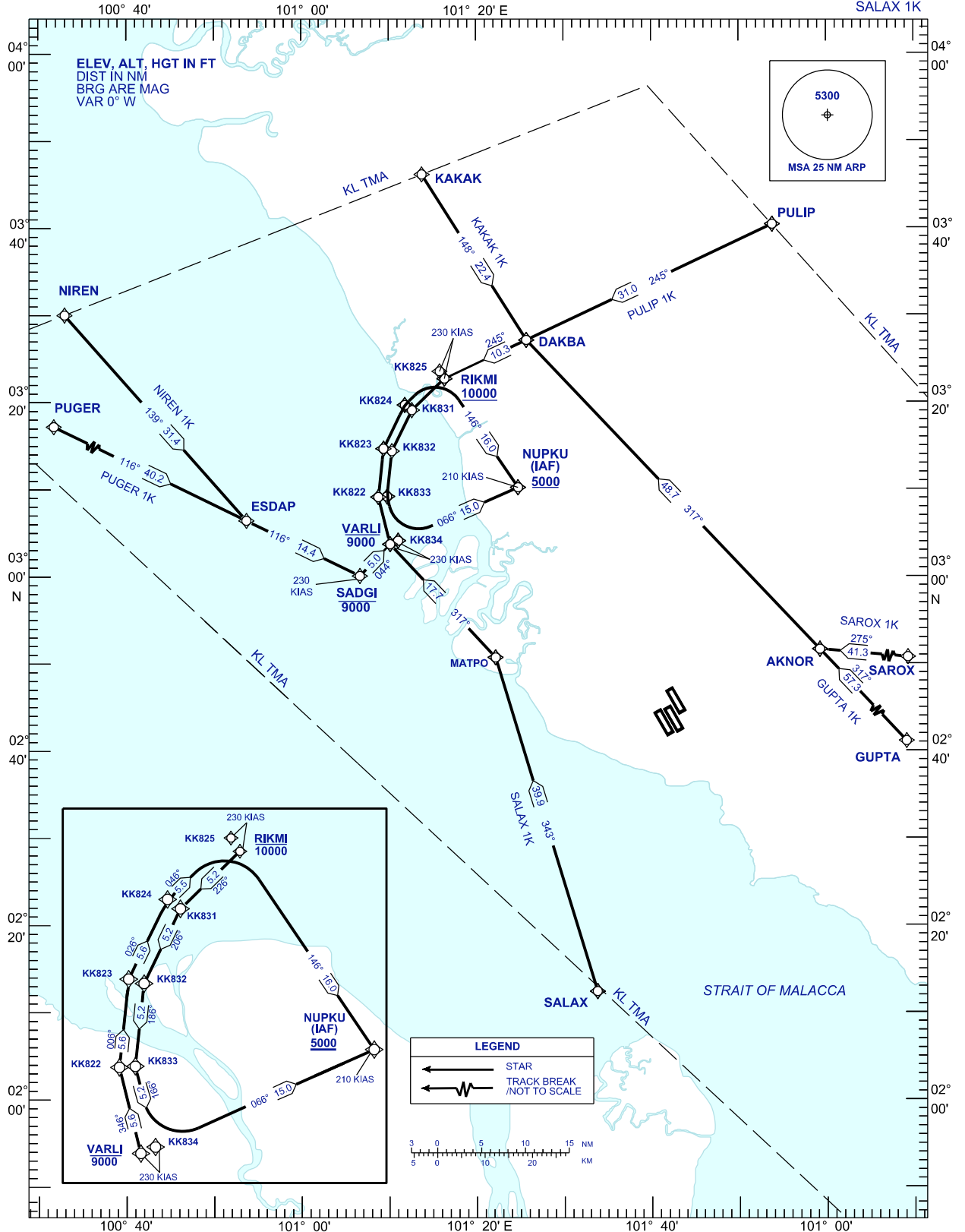
**STANDARD ARRIVAL CHART
INSTRUMENT (STAR) - ICAO**

APP	121.250	TWR	118.800
	124.200		118.500
	118.650		119.800
	125.850		
	135.750	ATIS	128.050

**SEPANG/KL INTERNATIONAL
AIRPORT (WMCK)
RNAV(GNSS) RWY 14L, 14R, 15**

- PMS NORTH
PUGER 1K KAKAK 1K SAROX 1K
NIREN 1K PULIP 1K GUPTA 1K
SALAX 1K

TRANSITION ALT 11000 FT



CHANGES: AMEND WAYPOINT RIKMI ALTITUDE TO READ AS 10000FT OR ABOVE,
ADD 230 KIAS AT WAYPOINT SADGI.