

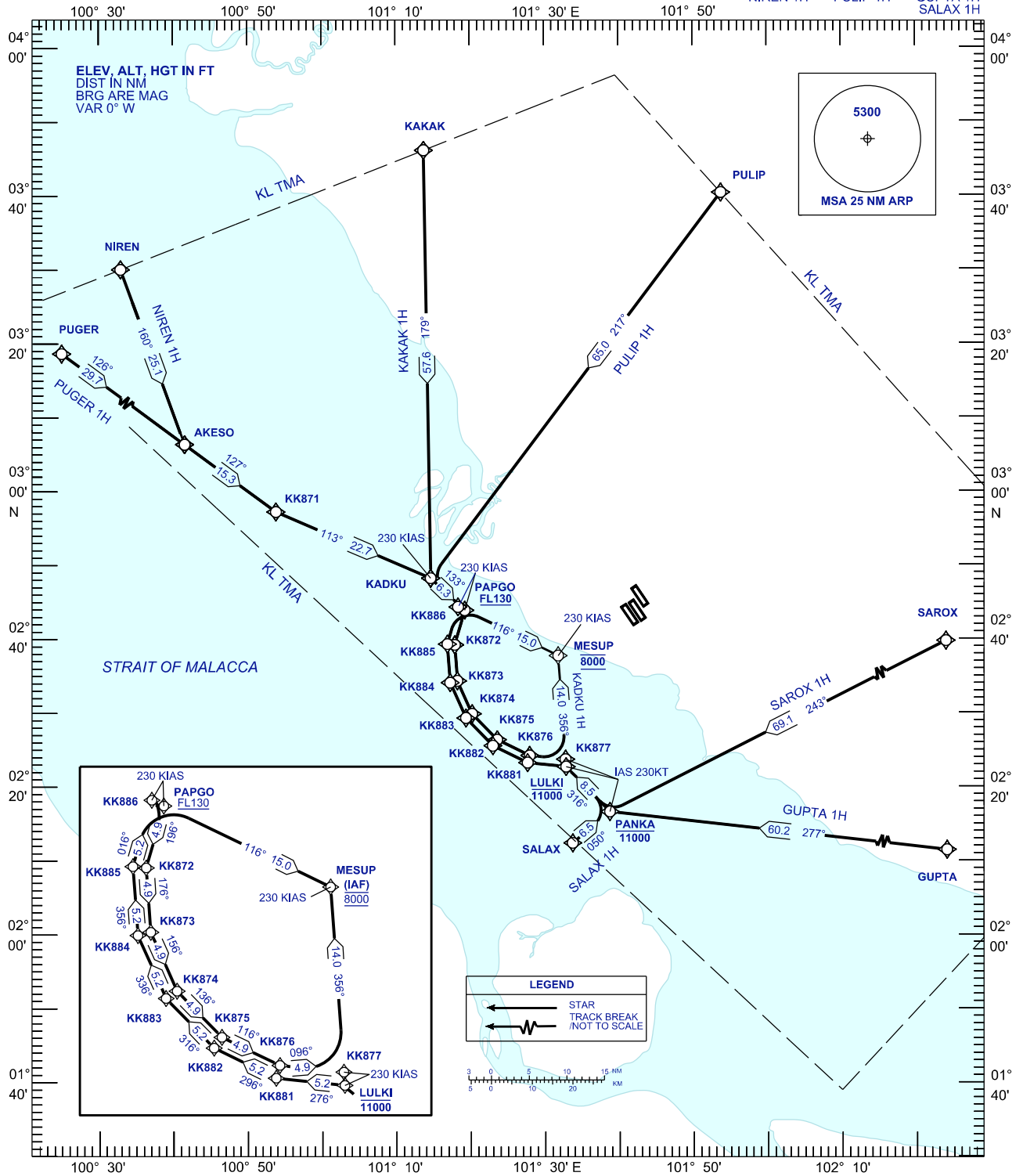
**STANDARD ARRIVAL CHART  
INSTRUMENT (STAR) - ICAO**

TRANSITION ALT 11000 FT

APP	121.250	TWR	118.800
	124.200		118.500
	118.650		119.800
	125.850	ATIS	128.050
135.750			

**SEPANG/KL INTERNATIONAL  
AIRPORT (WMKK)  
RNAV (GNSS) RWY 32R, 32L, 33,  
14L, 14R, 15**

PUGER 1H KAKAK 1H PMS WEST  
NIREN 1H PULIP 1H SAROX 1H  
GUPTA 1H  
SALAX 1H



**CHANGES:** CHANGE BEARING & DISTANCE BETWEEN PUGER TO AKESO,  
CHANGE DISTANCE BETWEEN KK872 TO KK873.