

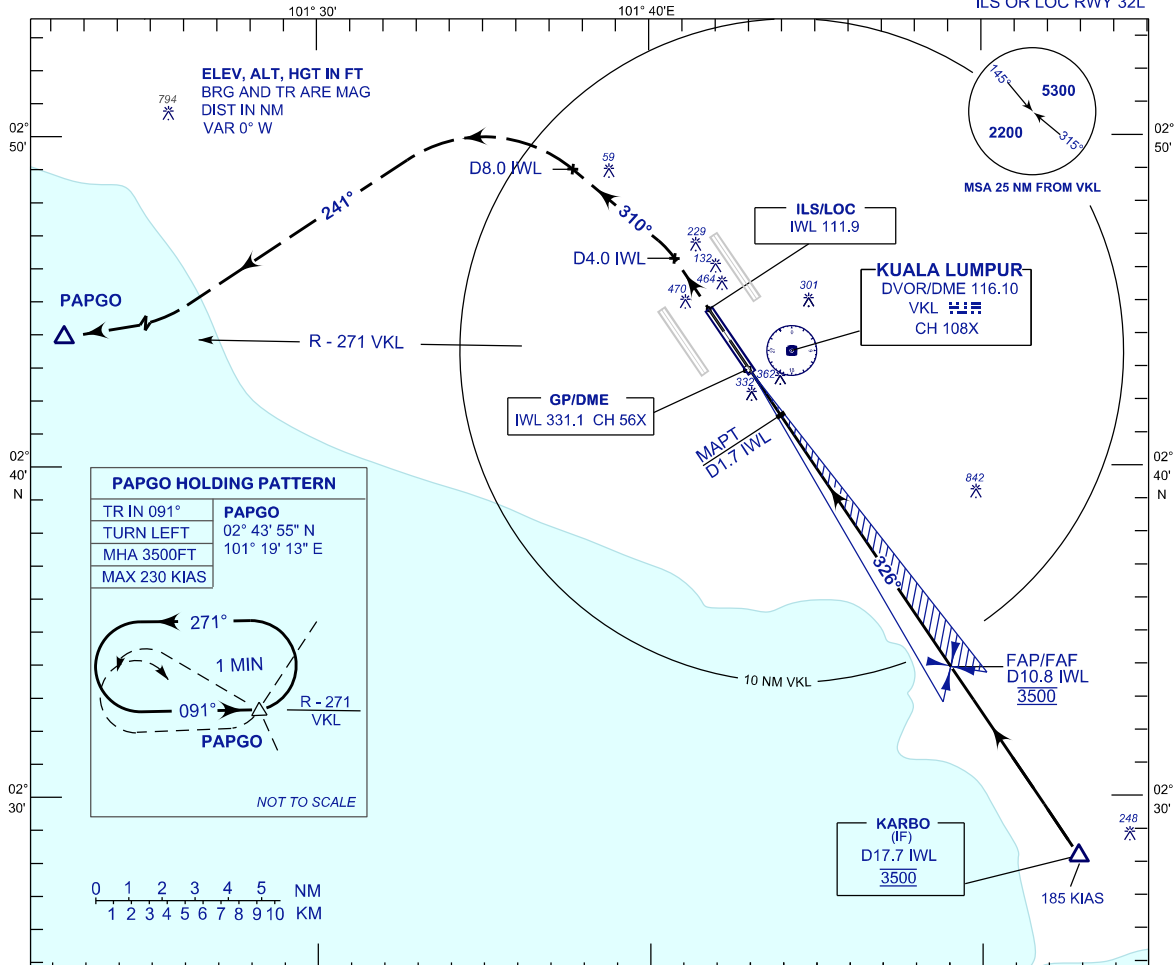
**INSTRUMENT APPROACH CHART - ICAO**

**AERODROME ELEV 69 FT**  
HEIGHT RELATED TO THR RWY 32L - ELEV 48 FT

APP	TWR	SMC	ATIS
118.65	118.50	121.80	128.05
124.65		122.525	
135.75			

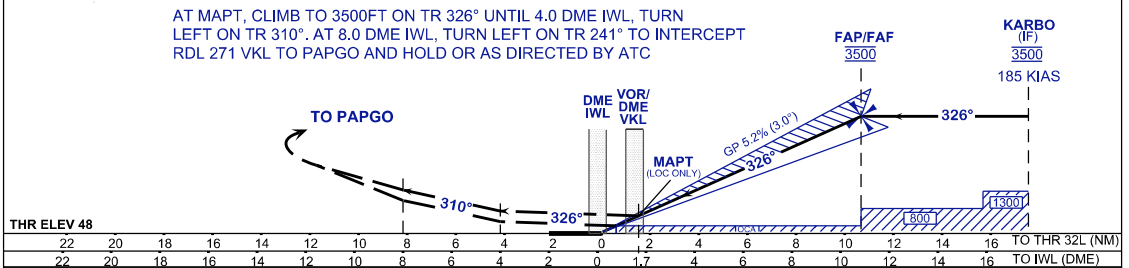
**SEPANG/KL INTERNATIONAL AIRPORT (WMKK)**

ILS OR LOC RWY 32L



USE QNH ILS RDH 52 FT

TRANSITION LEVEL FL130  
TRANSITION ALT 11 000



OCA (OCH)	A	B	C	D	GROUND SPEED (GS)	KT	80	100	120	140	160	180
ILS/DME CAT I		288	(240)		FAP - RWY32L (10.7 NM)	MIN:SEC	8:01	6:25	5:21	4:35	4:01	3:34
LOC/DME (GP INOP)		570	(522)		RATE OF DESCEND (318.4 FT/NM)	FT/MIN	420	530	630	740	840	950

DME IWL	NM	10.8	9.8	8.8	7.8	6.8	5.8	4.8	3.8	2.8	1.8	0.8
DIST THR/RWY32L	NM	10.7	9.6	8.6	7.6	6.6	5.6	4.6	3.6	2.6	1.6	0.6
ALTITUDE	FT	3500	3157	2838	2520	2201	1883	1564	1246	928	609	291