

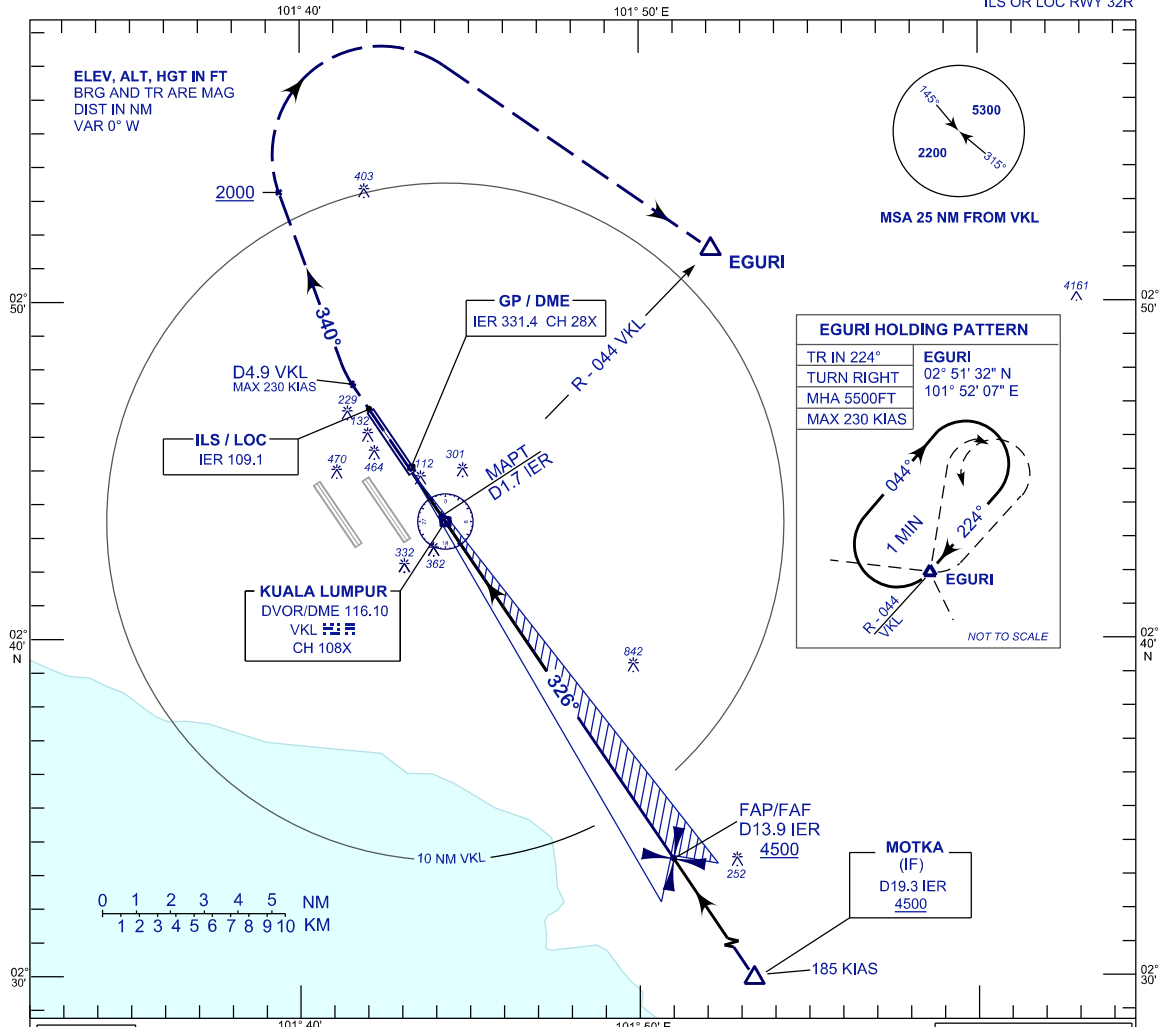
**INSTRUMENT
APPROACH
CHART - ICAO**

AERODROME ELEV 69 FT
HEIGHT RELATED TO
THR RWY 32R - ELEV 69 FT

APP 121.25 120.35 135.75	TWR 118.80	SMC 121.65	ATIS 128.05
-----------------------------------	---------------	---------------	----------------

**SEPANG/KL INTERNATIONAL
AIRPORT (WMKK)**

ILS OR LOC RWY 32R

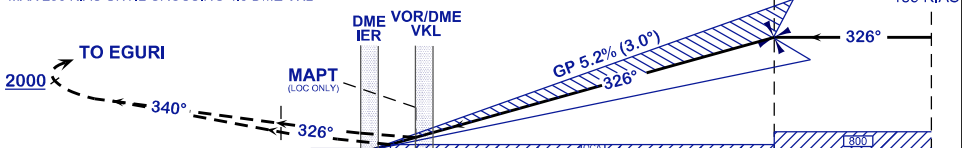


USE QNH
ILS RDH 56 FT

TRANSITION LEVEL FL130
TRANSITION ALT 11 000

MISSED APPROACH
AT MAPT CLIMB TO 5500FT ON TR 326°. AT 4.9 DME VKL (3.0 DME IER) TURN RIGHT ON TR 340°. AFTER PASSING 2000FT, TURN RIGHT TO EGURI AND HOLD OR AS DIRECTED BY ATC

CAUTION
MAX 230 KIAS UNTIL CROSSING 4.9 DME VKL



THR ELEV 69
TO THR 32R (NM)
TO IER (NM)

OCA (OCH)	A	B	C	D	GROUND SPEED (GS)	KT	80	100	120	140	160	180
ILS/DME CAT I	300 (231)				FAP - RWY32R (13.8 NM)	MIN:SEC	10:19	8:16	6:53	5:54	5:10	4:36
LOC/DME (GP INOP)	600 (531)				RATE OF DESCEND (318.4 FT/NM)	FT/MIN	420	530	630	740	840	950

DME IER	NM	13.9	12.9	11.9	10.9	9.9	8.9	7.9	6.9	5.9	4.9	3.9	2.9	1.9	0.9
DIST THR/RWY32R	NM	13.8	12.7	11.7	10.7	9.7	8.7	7.7	6.7	5.7	4.7	3.7	2.7	1.7	0.7
ALTITUDE	FT	4500	4166	3847	3529	3210	2892	2573	2255	1936	1618	1300	981	663	344