

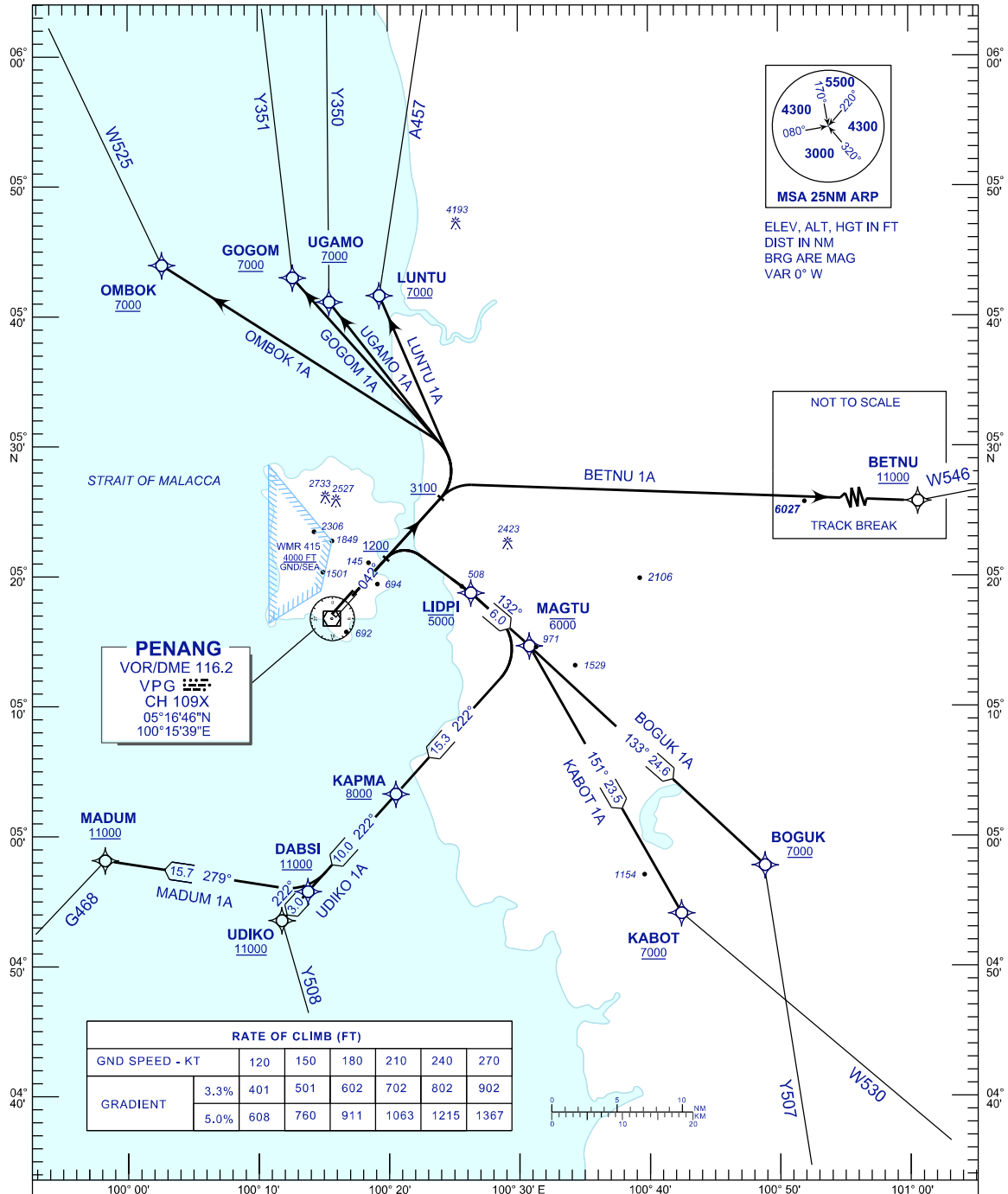
**STANDARD DEPARTURE CHART
INSTRUMENT (SID) - ICAO**

TRANSITION ALTITUDE
11000 FT

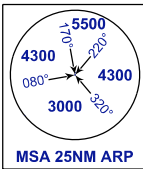
APP 125.925
TWR 121.1
SMC 121.6, 121.9
ATIS 126.4

**PENANG/PENANG
INTERNATIONAL AIRPORT (WMKP)
RNAV (GNSS) RWY 04**

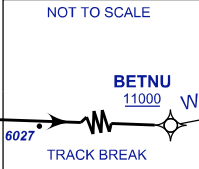
OMBOK 1A GOGOM 1A UGAMO 1A
LUNTU 1A BETNU 1A BOGUK 1A
KABOT 1A UDIKO 1A MADUM 1A



PENANG
VOR/DME 116.2
VPG
CH 109X
05°16'46"N
100°15'39"E



ELEV, ALT, HGT IN FT
DIST IN NM
BRG ARE MAG
VAR 0° W



RATE OF CLIMB (FT)						
GND SPEED - KT	120	150	180	210	240	270
GRADIENT	3.3%	401	501	602	702	802
	5.0%	608	760	911	1063	1215
						1367

COMMUNICATION FAILURE :
SQUAWK 7600
• IF UNDER PILOT NAVIGATION, MAINTAIN LAST ASSIGNED LEVEL FOR 3 MINUTES, IF NO ONWARD CLEARANCE IS RECEIVED. SUBSEQUENTLY CLIMB TO COMPLY WITH SID.
• IF UNDER RADAR VECTORED : MAINTAIN VECTOR FOR 2 MINUTES, IF BELOW MSA, CLIMB TO MSA, THEN TRACK TO INTERCEPT CLEARED OR PREVIOUSLY ASSIGNED SID TO DESTINATION.

CHANGES: CHANGE APP FREQUENCY VALUE.