

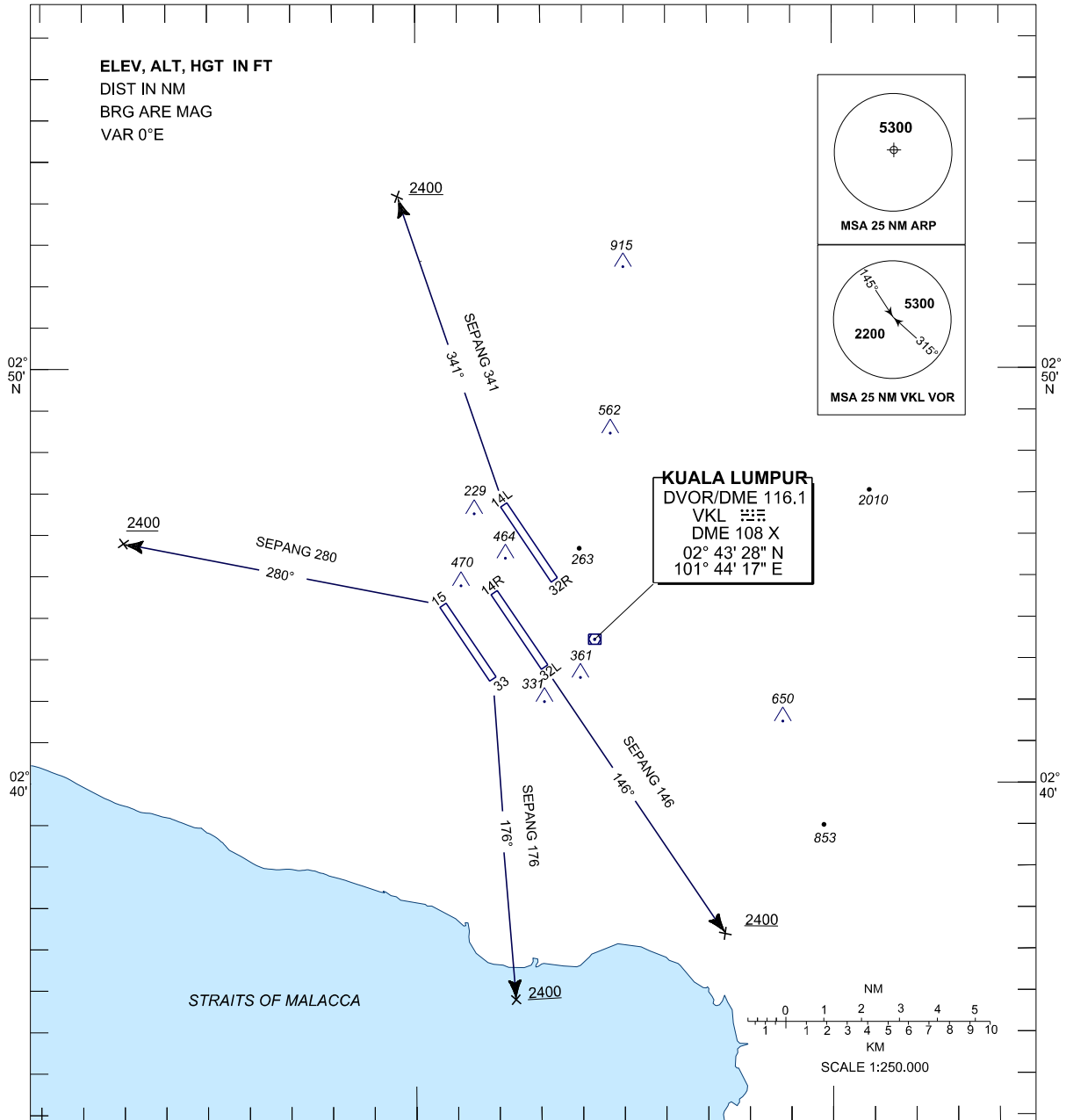
**STANDARD DEPARTURE CHART  
INSTRUMENT (SID) - ICAO**

TRANSITION ALT  
11000 FT

APP	135.250
TWR	118.800, 118.500 119.800
GND	121.650, 121.800 122.525, 118.050
ATIS	126.450

**SEPANG/KL INTERNATIONAL  
AIRPORT (WMKK)**

**RADAR DEPARTURES**



**RWY 33 - SEPANG 280**  
101°40'E

AFTER TAKE - OFF TURN LEFT TR 280° UNTIL PASSING 2400FT, THEN FOLLOW THE ASSIGNED HEADING.

RWY 32R - SEPANG 341  
AFTER TAKE - OFF PROCEED ON TR 341° UNTIL PASSING 2400FT, THEN FOLLOW THE ASSIGNED HEADING.

**RWY 14R - SEPANG 146**  
101°50'

AFTER TAKE - OFF PROCEED ON TR 146° UNTIL PASSING 2400FT, THEN FOLLOW THE ASSIGNED HEADING.

RWY 15 - SEPANG 176  
AFTER TAKE - OFF TURN RIGHT ON TR 176° UNTIL PASSING 2400FT, THEN FOLLOW THE ASSIGNED HEADING.

REMARKS: A) MINIMUM CLIMB GRADIENT 5% (304 FT/NM) UNTIL LEAVING 2400FT, FOR ATC PURPOSES.  
B) TURN BEFORE DER IS NOT ALLOWED.