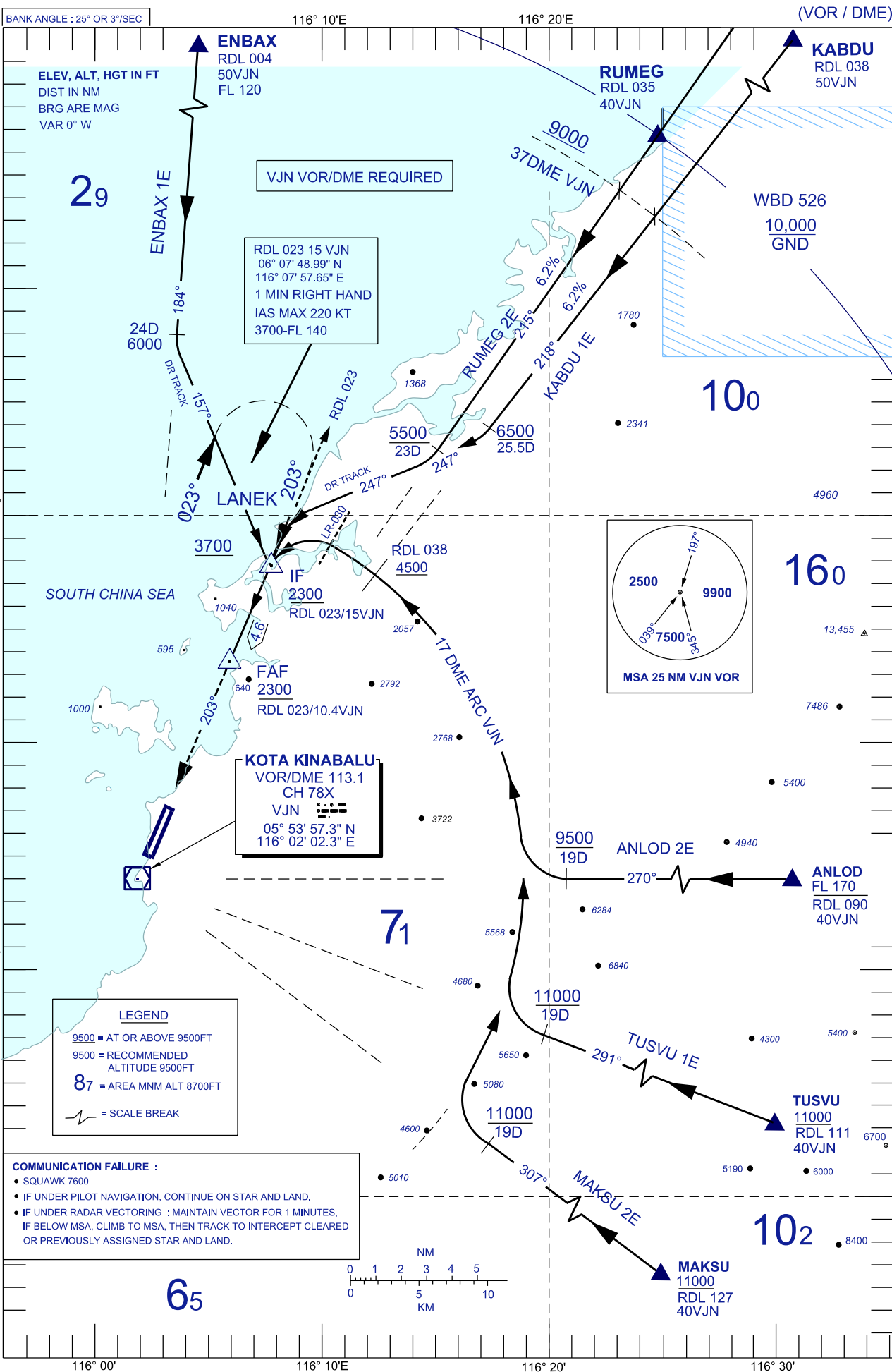


# STANDARD ARRIVAL CHART INSTRUMENT (STAR) - ICAO

**KOTA KINABALU/KOTA KINABALU  
(WBKK)  
RWY 20**

TRANSITION ALTITUDE  
11,000 FT

APP 119.1  
TWR 118.3  
GND 121.6  
ATIS 127.4



29

10o

16o

71

65

**LEGEND**  
 9500 = AT OR ABOVE 9500FT  
 9500 = RECOMMENDED ALTITUDE 9500FT  
 87 = AREA MNM ALT 8700FT  
 ~ = SCALE BREAK

**COMMUNICATION FAILURE :**  
 • SQUAWK 7600  
 • IF UNDER PILOT NAVIGATION, CONTINUE ON STAR AND LAND.  
 • IF UNDER RADAR VECTURING : MAINTAIN VECTOR FOR 1 MINUTES, IF BELOW MSA, CLIMB TO MSA, THEN TRACK TO INTERCEPT CLEARED OR PREVIOUSLY ASSIGNED STAR AND LAND.

