

**STANDARD DEPARTURE CHART
INSTRUMENT (SID) - ICAO**

**KOTA KINABALU/KOTA KINABALU
(WBKK)
RWY 20
DEPARTURES (LEFT TURN)
(RNAV 1)**

APP 119.1
TWR 118.3
GND 121.6
ATIS 127.4

TRANSITION ALTITUDE
11,000 FT

BANK ANGLE : 15° ACHIEVED

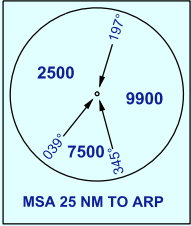
116° 00'

116° 30'E

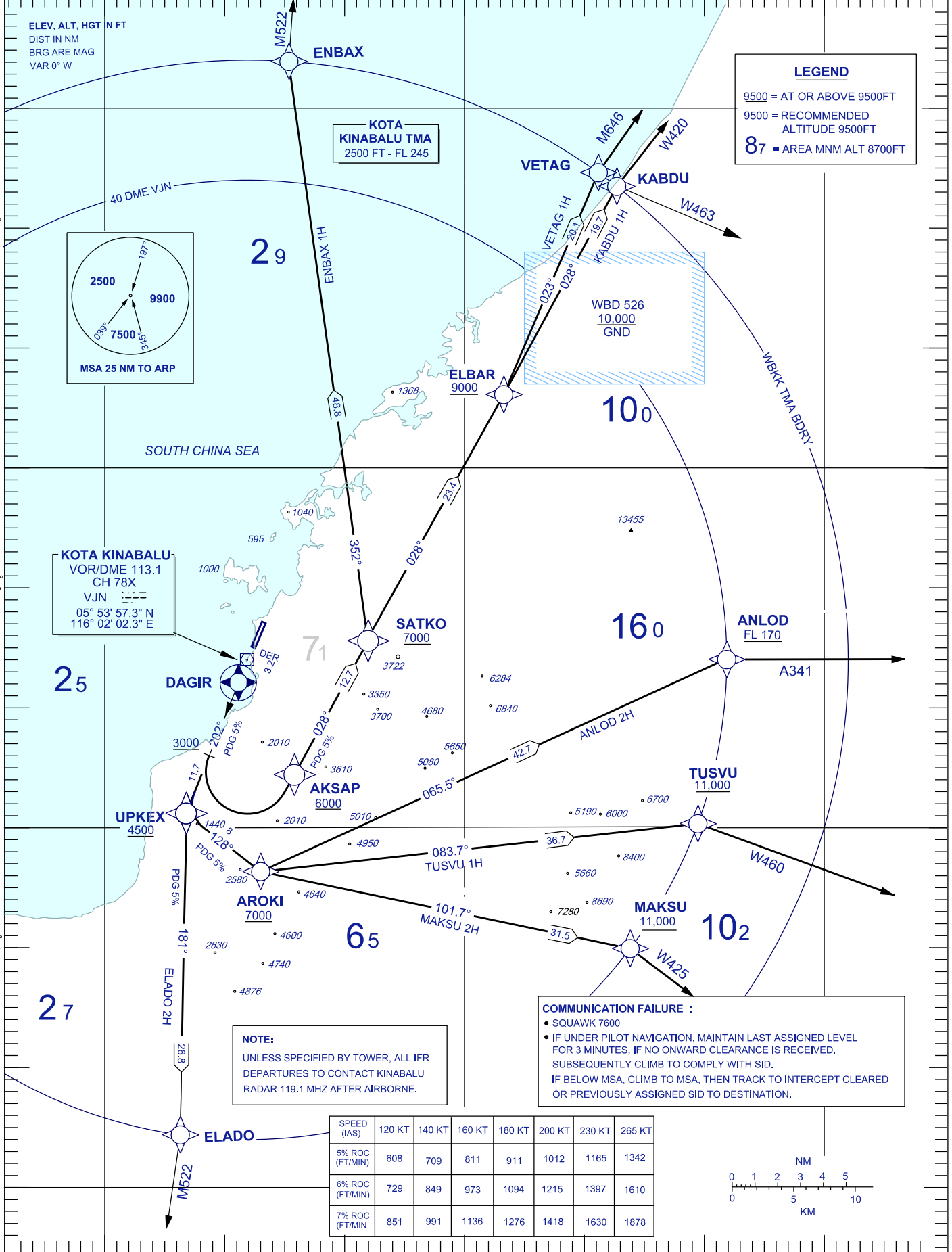
LEGEND
9500 = AT OR ABOVE 9500FT
9500 = RECOMMENDED
ALTITUDE 9500FT
87 = AREA MNM ALT 8700FT

ELEV, ALT, HGT IN FT
DIST IN NM
BRG ARE MAG
VAR 0° W

KOTA KINABALU TMA
2500 FT - FL 245



KOTA KINABALU
VOR/DME 113.1
CH 78X
VJN
05° 53' 57.3" N
116° 02' 02.3" E

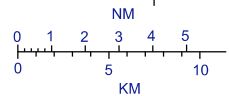


NOTE:
UNLESS SPECIFIED BY TOWER, ALL IFR
DEPARTURES TO CONTACT KINABALU
RADAR 119.1 MHZ AFTER AIRBORNE.

COMMUNICATION FAILURE :

- SQUAWK 7600
- IF UNDER PILOT NAVIGATION, MAINTAIN LAST ASSIGNED LEVEL FOR 3 MINUTES, IF NO ONWARD CLEARANCE IS RECEIVED. SUBSEQUENTLY CLIMB TO COMPLY WITH SID.
- IF BELOW MSA, CLIMB TO MSA, THEN TRACK TO INTERCEPT CLEARED OR PREVIOUSLY ASSIGNED SID TO DESTINATION.

SPEED (IAS)	120 KT	140 KT	160 KT	180 KT	200 KT	230 KT	265 KT
5% ROC (FT/MIN)	608	709	811	911	1012	1165	1342
6% ROC (FT/MIN)	729	849	973	1094	1215	1397	1610
7% ROC (FT/MIN)	851	991	1136	1276	1418	1630	1878



116° 00' E

116° 30'