

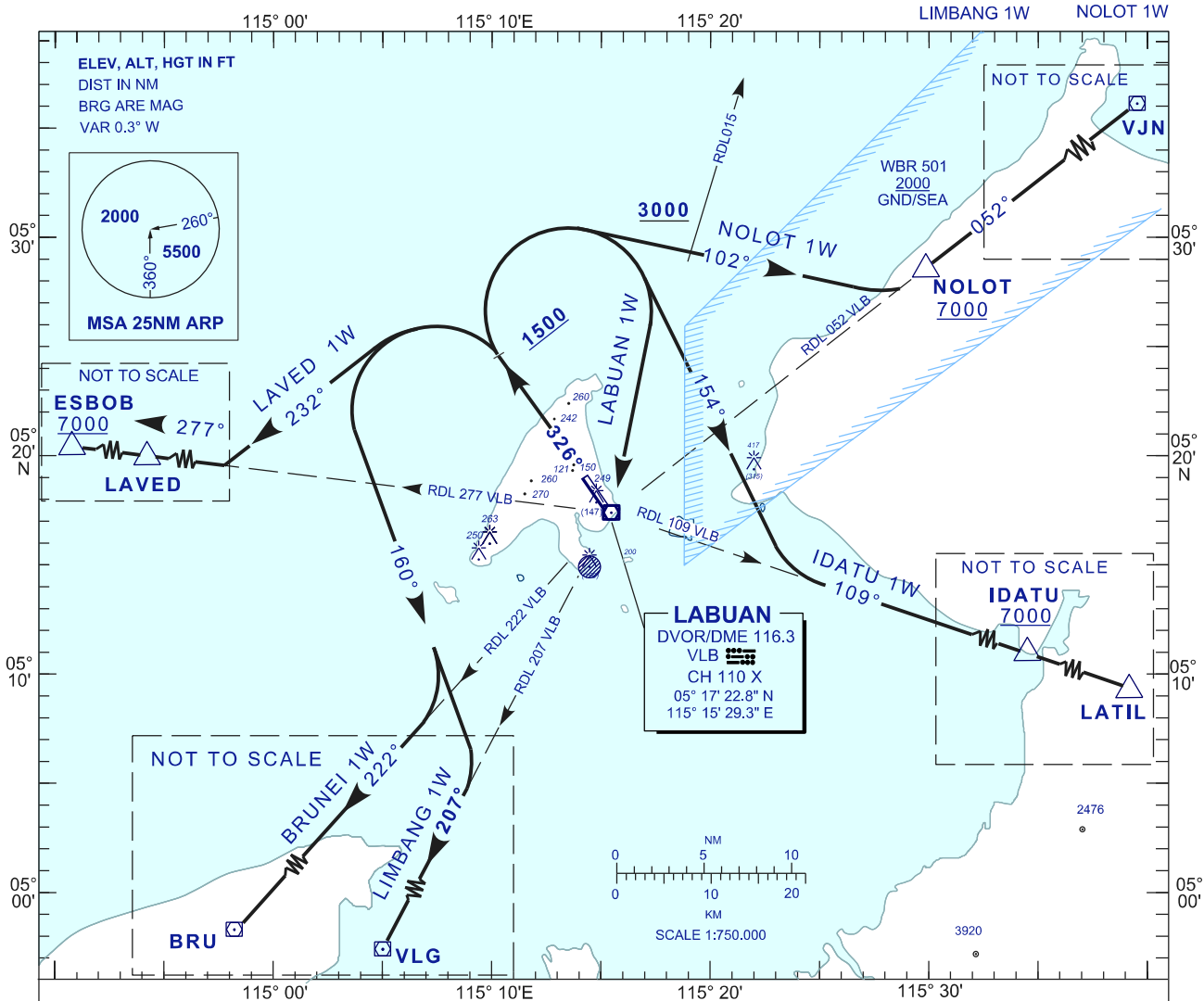
STANDARD DEPARTURE CHART INSTRUMENT (SID) - ICAO

**LABUAN/LABUAN (WBKL)
DEPARTURES RWY 32**

TRANSITION ALTITUDE
11,000 FT

APP 119.7, 249.3
TWR 118.1, 238.1
SMC 118.35, 235.1
ATIS 126.85

LAVED 1W
BRUNEI 1W
LIMBANG 1W
IDATU 1W
NOLOT 1W



INITIAL CLIMB PROCEDURE	DESIGNATOR	SID DESCRIPTION
AFTER TAKE-OFF TRACK 326° AT 1500FT OR ABOVE TURN LEFT	LAVED ONE WHISKEY	TRACK 232° TO INTERCEPT RDL 277 VLB VOR OUTBOUND TO LAVED THEN ESBOB
	BRUNEI ONE WHISKEY	TRACK 160° TO INTERCEPT RDL 222 VLB VOR TO BRU VOR
	LIMBANG ONE WHISKEY	TRACK 160° TO INTERCEPT RDL 207 VLB TO VLG VOR
AFTER TAKE-OFF TRACK 326° AT 1500FT OR ABOVE TURN RIGHT	NOLOT ONE WHISKEY	TRACK 102° TO INTERCEPT RDL 052 VLB VOR OUTBOUND TO NOLOT THEN VJN(G460)
	IDATU ONE WHISKEY	TRACK 154° TO INTERCEPT RDL 109 VLB VOR OUTBOUND TO IDATU THEN LATIL
	LABUAN ONE WHISKEY	TRACK DCT TO VLB VOR

CHANGES : UPDATING THE CHART FORMAT.