

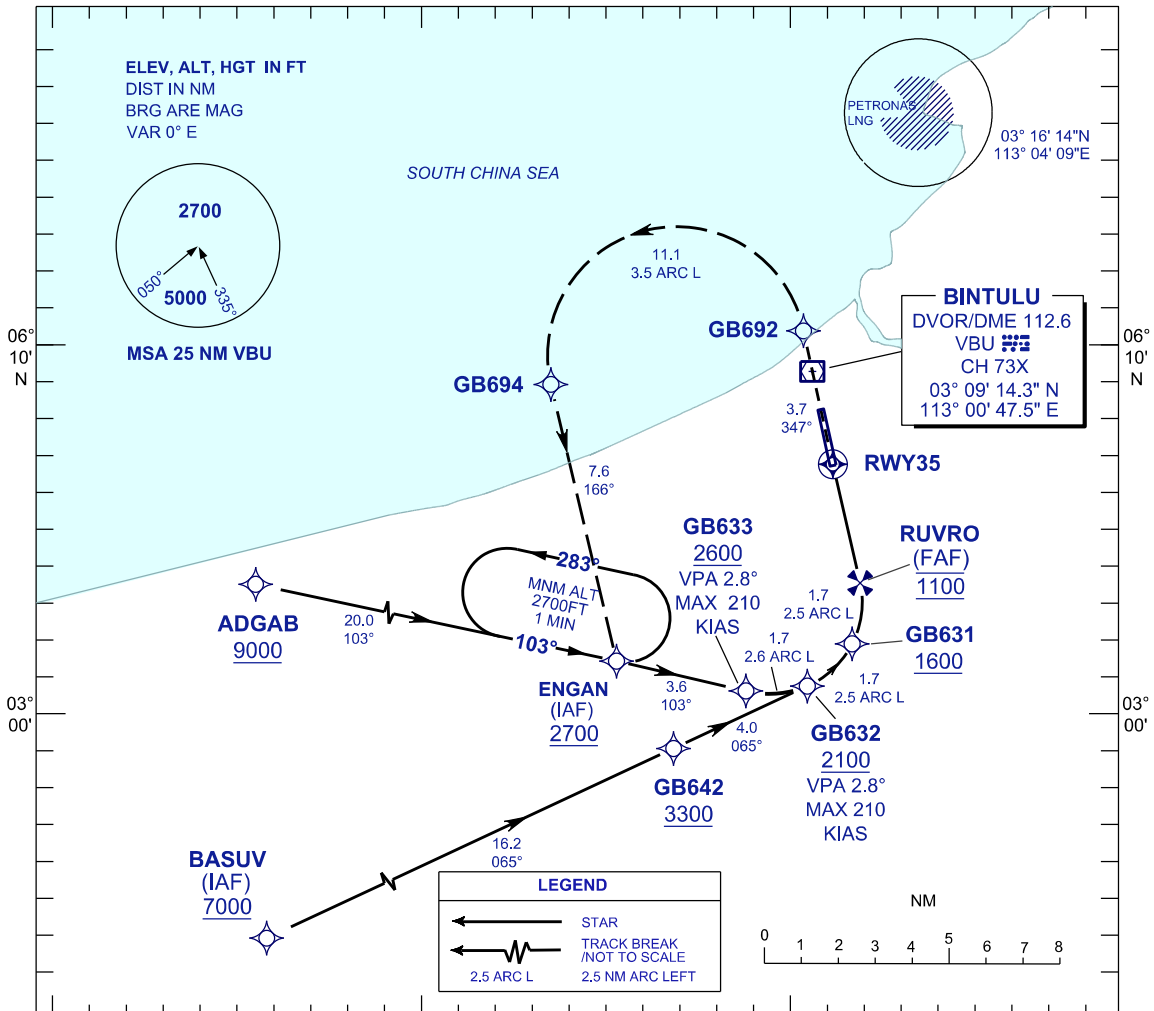
**INSTRUMENT  
APPROACH  
CHART - ICAO**

**AERODROME ELEV 75 FT**  
HEIGHTS RELATED TO  
THR RWY 35 - ELEV 75 FT

TWR / APP	122.30 (P) 119.25 (S)
SMC	121.5
ATIS	127.8

**BINTULU/BINTULU (WBGB)**

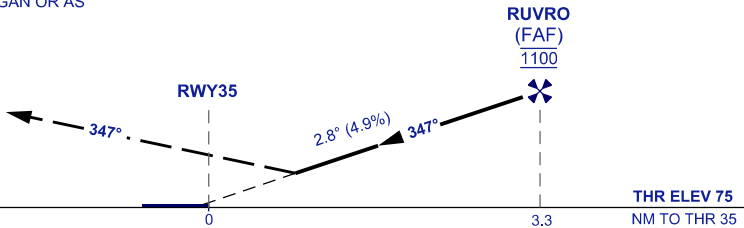
**RNP Z RWY 35 (AR)**



**MISSED APPROACH**  
CLIMB TO 2700 FT VIA THE RNP MISSED  
APPROACH TRACK TO ENGAN OR AS  
DIRECTED BY ATC.

TRANSITION LEVEL FL 130  
TRANSITION ALT 11000

VPA 2.8°  
RDH 50 FT



OCA/H		
ACFT CAT.	C	D
RNP 0.3	737 (663) / 3.5 KM	

GROUND SPEED - KT	70	90	100	120	140	160
RATE OF DESCENT (2.8°) ( FT / MIN )	347	446	495	594	693	792

DISTANCE TO THRESHOLD (NM)	3.3	3	2	1
ALTITUDE (FT)	1100	960	670	370

- AUTHORIZATION REQUIRED**
- GNSS REQUIRED**
- RF REQUIRED**
- APPROACH NOT AUTHORIZED WHEN AIRPORT TEMPERATURE BELOW 20°C OR ABOVE 36°C
- WBGB ALTIMETER SETTING REQUIRED.
- PAPI AND VERTICAL PATH ANGLE NOT COINCIDENT
- PROCEDURE REQUIRES RNP 1.0 IN FEEDER SEGMENTS
- PROCEDURE REQUIRES RNP 0.3 FROM IAFS TO RWY