

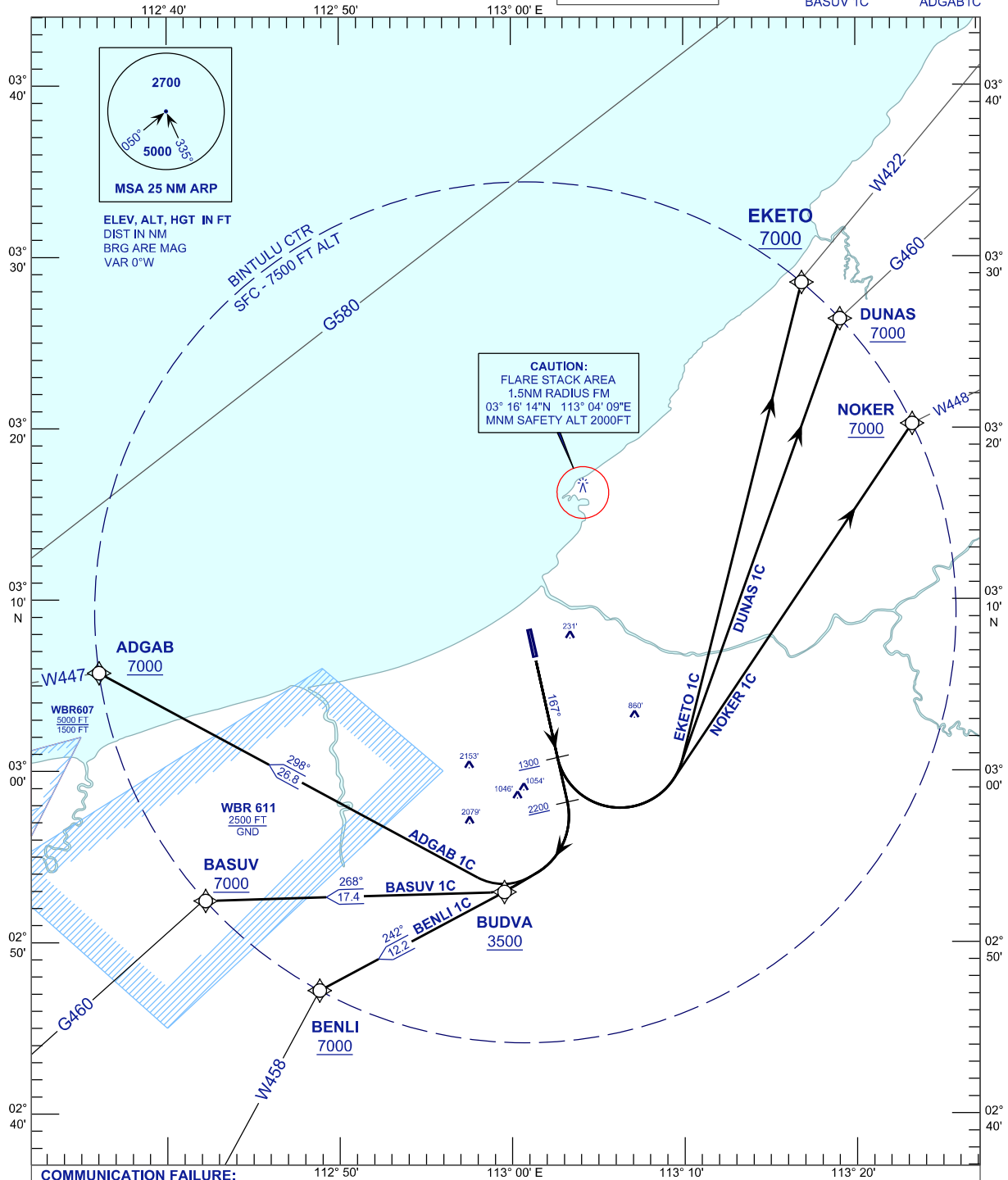
**STANDARD DEPARTURE CHART  
INSTRUMENT (SID) - ICAO**

TRANSITION ALTITUDE  
11000FT

APP/TWR 122.30 (P)  
119.25 (S)  
SMC 121.80  
ATIS 127.80

**BINTULU/BINTULU (WBGB)  
RNAV Rwy 17**

EKETO 1C  
NOKER 1C  
BASUV 1C  
DUNAS 1C  
BENLI 1C  
ADGAB 1C



**CAUTION:**  
FLARE STACK AREA  
1.5NM RADIUS FM  
03° 16' 14"N 113° 04' 09"E  
MNM SAFETY ALT 2000FT

**COMMUNICATION FAILURE:**

- SET TRANSPONDER TO MODE A/C CODE 7600.
- IF UNDER PILOT NAVIGATION, MAINTAIN ASSIGNED LEVEL FOR 3 MINUTES. IF NO ONWARD CLEARANCE IS RECEIVED, SUBSEQUENTLY CLIMB TO COMPLY WITH SID.
- IF UNDER RADAR VECTORED, MAINTAIN VECTOR FOR 2 MINUTES, IF BELOW MSA CLIMB TO MSA, THEN TRACK TO INTERCEPT CLEARED OR PREVIOUSLY ASSIGNED SID TO DESTINATION.