

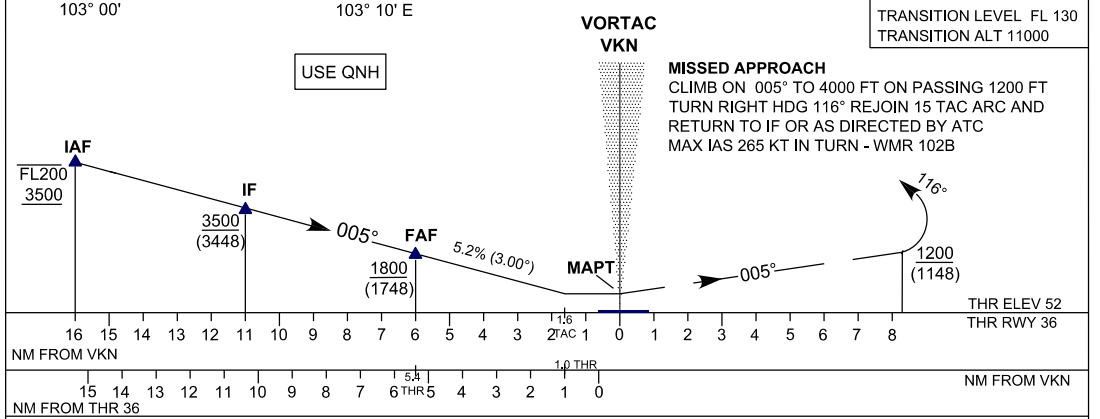
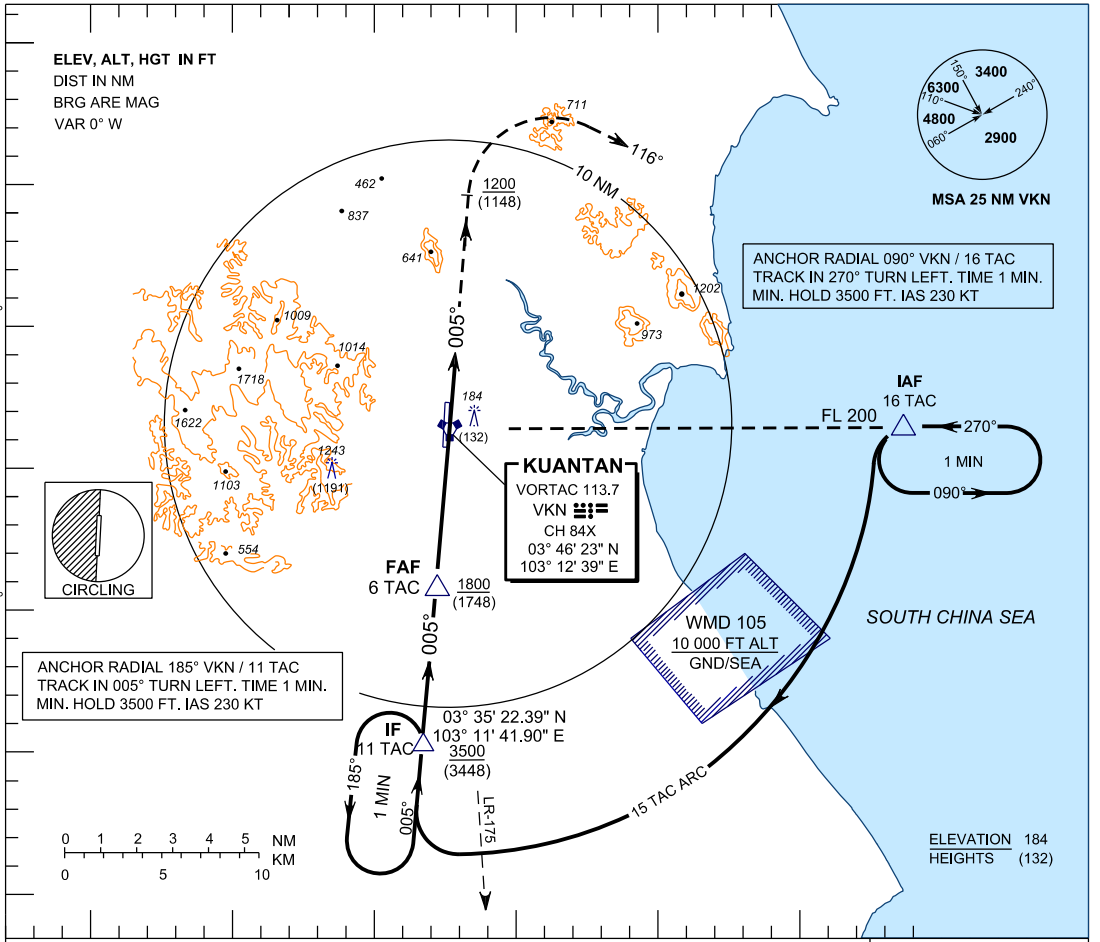
# INSTRUMENT APPROACH CHART - ICAO

**AERODROME ELEV 55 FT**  
 HEIGHT RELATED TO  
 THR RWY 36 - ELEV 52 FT

TWR 118.1, 238.1  
 GND 263.9, 120.4  
 APP 119.7, 121.5  
 ATIS 127.5, 253.8  
 SRA 261.6, 118.7

**KUANTAN/SULTAN AHMAD SHAH (WMKD)**  
**RWY 36**

TACAN 2 (HI / LO)



OCA(OCH)				
AIRCRAFT CATEGORY	A	B	C	D
STRAIGHT - IN - APPROACH	430( 378 ) / 1.6 TAC			
CIRLING & MIN VISIBILITY - KM (NM)	600(545)	900(845)	1100(1045)	
	1.9(1.0)	2.8(1.5)	3.7(2.0)	4.6(2.5)

TIME TO THR RWY 18 FROM FAP 5 NM			
GROUND SPEED (KT)	90	120	150
MINUTES : SECONDS	3:20	2:30	2:00
5.2% DESCENT (FT/MIN)	480	640	800

CAUTION : CIRLING IS NOT AUTHORISED WEST OF RUNWAY 18/36

GROUND SPEED (KT)	180	210	240
MINUTES : SECONDS	1:40	1:26	1:15
5.2% DESCENT (FT/MIN)	1000	1115	1275

ALTITUDE VS DME DISTANCE TO THR RWY 36						
DME DISTANCE	6	5	4	3	2	1.6
ALTITUDE	1820	1700	1380	1060	745	430

CHANGES: AT PROFILE VIEW, AMEND RWY 18 TO RWY 36 IN ALTITUDE TABLE.