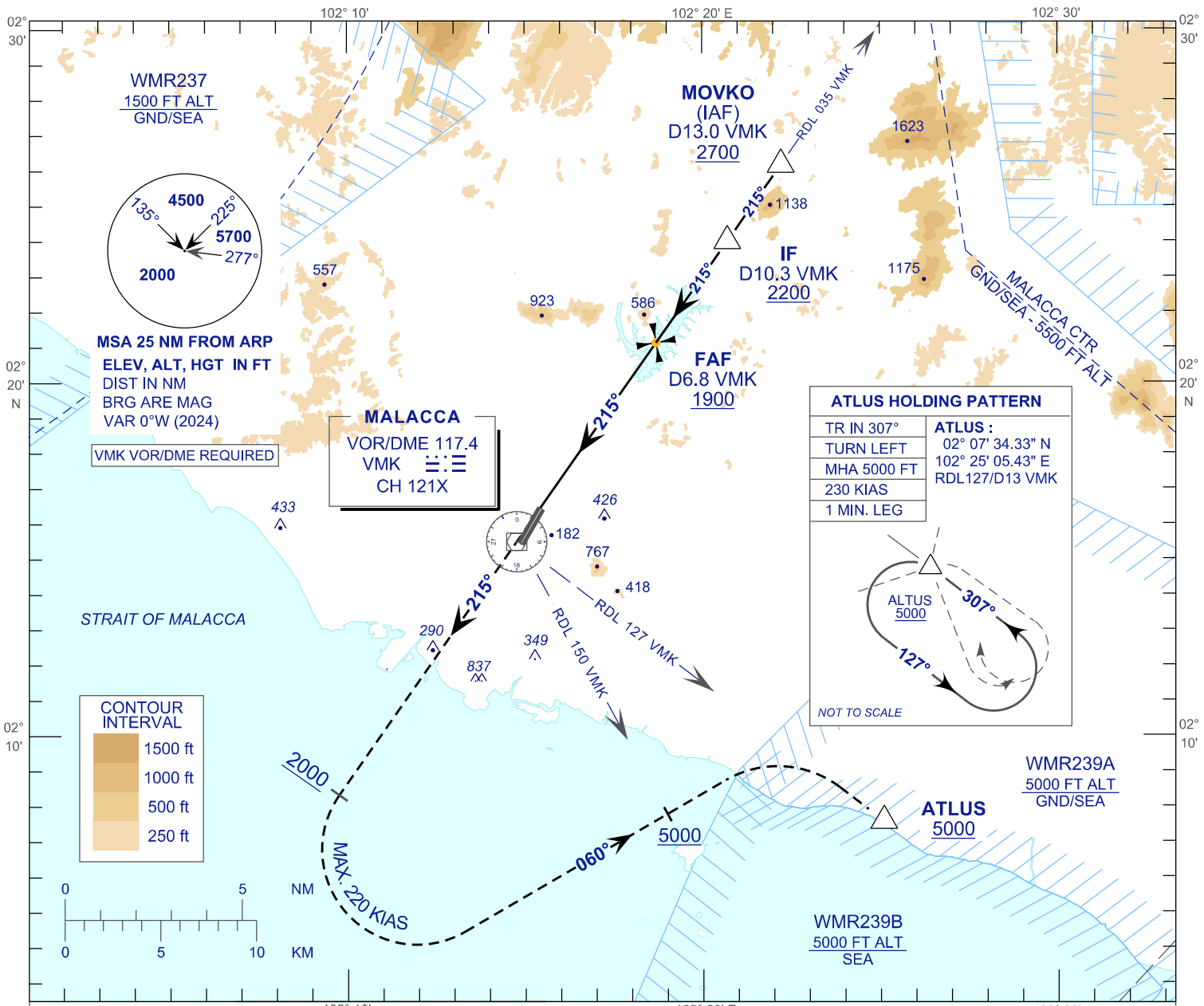


**INSTRUMENT  
APPROACH  
CHART - ICAO**

**AERODROME ELEV 40FT**  
HEIGHT RELATED TO  
THR RWY 21 - ELEV 40FT

TWR 118.00  
SMC 121.60  
ATIS 127.45

**MALACCA/MALACCA (WMKM)**  
**VOR Y RWY 21**



**ATLUS HOLDING PATTERN**

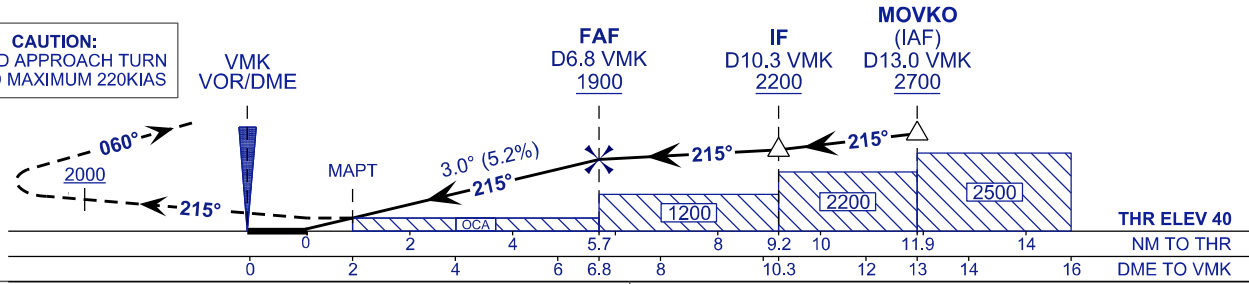
TR IN 307°	<b>ATLUS :</b>
TURN LEFT	02° 07' 34.33" N
MHA 5000 FT	102° 25' 05.43" E
230 KIAS	RDL127/D13 VMK
1 MIN. LEG	

NOT TO SCALE

TRANSITION LEVEL FL 130  
TRANSITION ALT 11,000 FT

**MISSED APPROACH:**  
CLIMB TO 5000 FT OR ABOVE ON TR 215°, ON PASSING 2000 FT TURN LEFT TR 060° TO INTERCEPT RDL 127 VMK THEN TO ATLUS AND HOLD, OR AS DIRECTED BY ATC.

**CAUTION:**  
MISSED APPROACH TURN  
SPEED MAXIMUM 220KIAS



OCA (H)	CAT.	A	B	C
		650 (610)		

DME VMK (NM)	6.8	6.0	5.0	4.0	3.0	2.0
DIST THR RWY21 (NM)	5.7	4.8	3.8	2.8	1.8	0.8
ALTITUDE (FT)	1900	1630	1311	993	674	356

GROUND SPEED (KT)	80	100	120	140	160	180
FAF - RWY21(5.7NM) (MIN:SEC)	4:16	3:25	2:51	2:26	2:08	1:54
RATE OF DESCEND (318.5 FT/MIN)	420	530	640	740	850	960