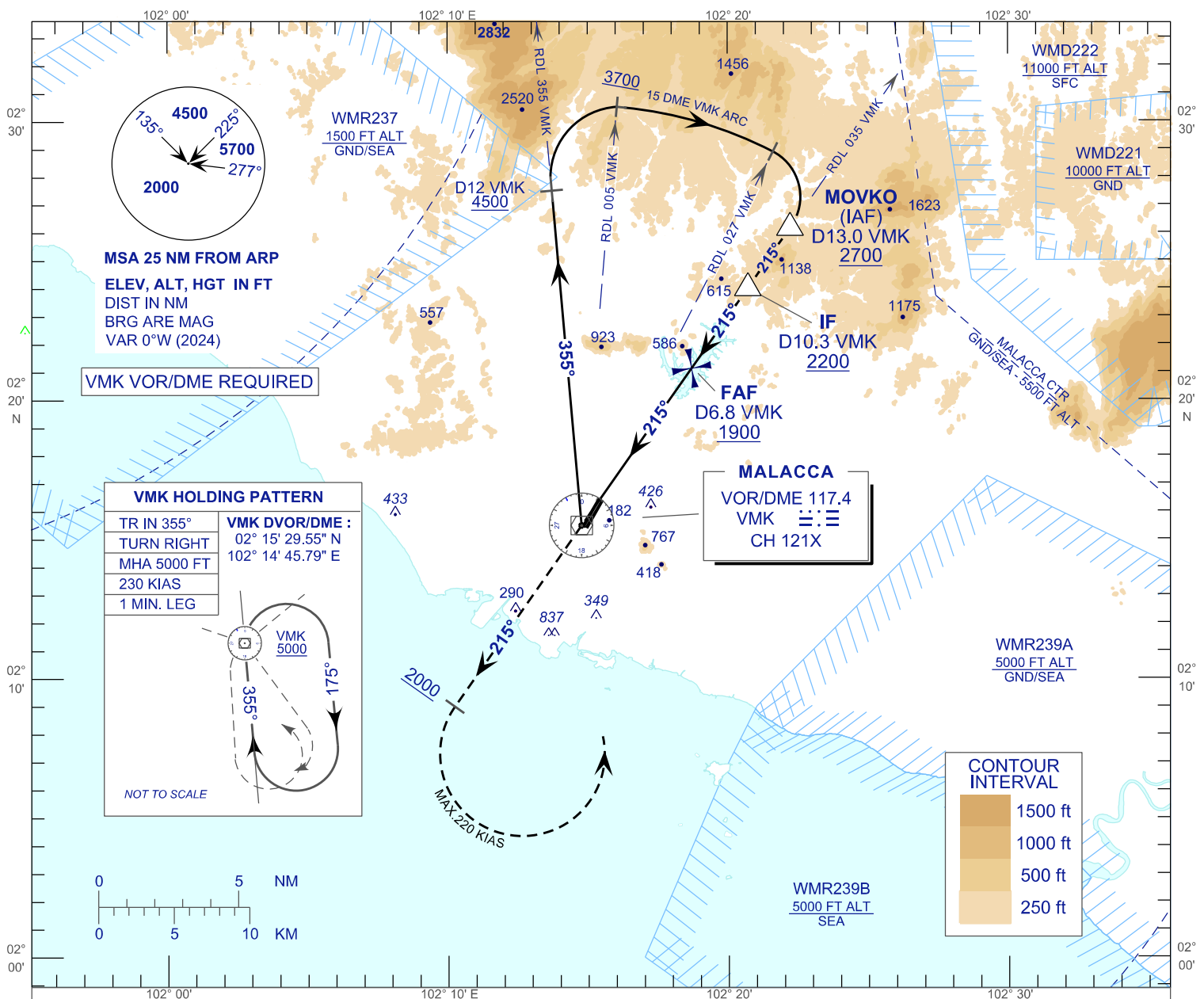


**INSTRUMENT
APPROACH
CHART - ICAO**

AERODROME ELEV 40FT
HEIGHT RELATED TO
THR RWY 21 - ELEV 40FT

TWR 118.00
SMC 121.60
ATIS 127.45

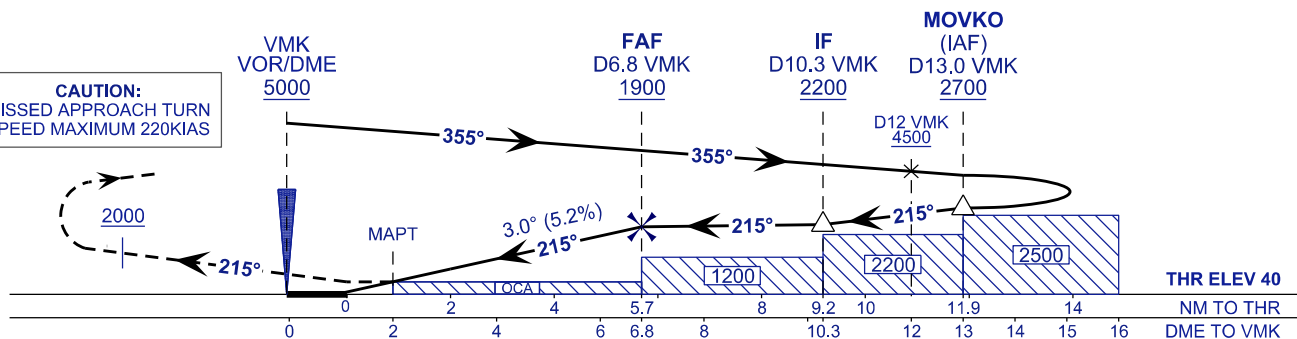
MALACCA/MALACCA (WMKM)
VOR Z (15 DME ARC) RWY 21



TRANSITION LEVEL FL 130
TRANSITION ALT 11,000 FT

MISSED APPROACH:
CLIMB TO 5000 FT OR ABOVE ON TR 215°, ON PASSING 2000 FT TURN LEFT TO VMK DVOR/DME AND HOLD,
OR AS DIRECTED BY ATC.

CAUTION:
MISSED APPROACH TURN
SPEED MAXIMUM 220KIAS



OCA (H)	CAT.		
	A	B	C
VOR/DME	650 (610)		

DME VMK (NM)	6.8	6.0	5.0	4.0	3.0	2.0
DIST THR RWY21 (NM)	5.7	4.8	3.8	2.8	1.8	0.8
ALTITUDE (FT)	1900	1630	1311	993	674	356

GROUND SPEED (KT)	80	100	120	140	160	180
FAF - RWY21 (5.7NM) (MIN:SEC)	4:16	3:25	2:51	2:26	2:08	1:54
RATE OF DESCEND (318.5 FT/MIN)	420	530	640	740	850	960